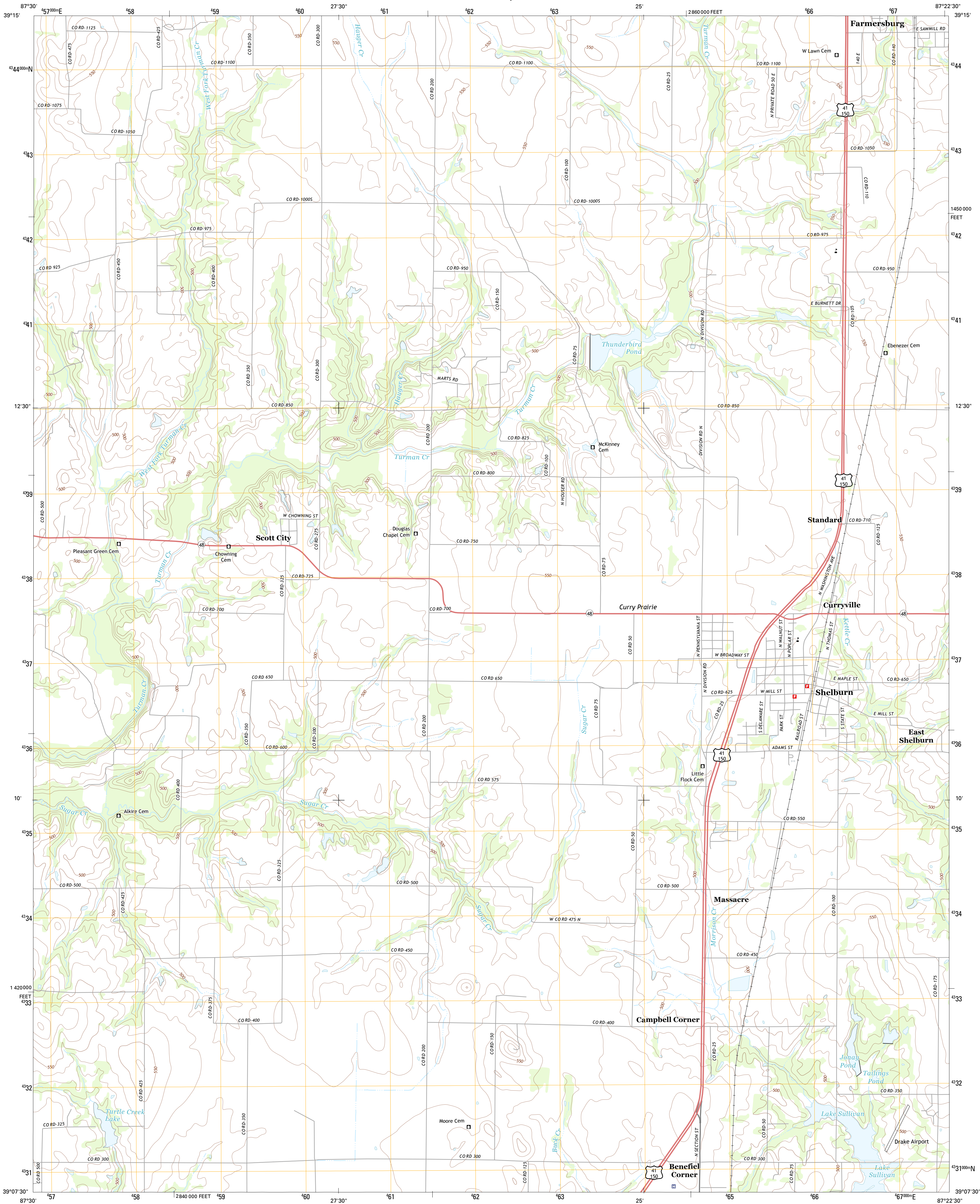




U.S. DEPARTMENT OF THE INTERIOR
U. S. GEOLOGICAL SURVEY



SHELburn QUADRANGLE
INDIANA-SULLIVAN CO.
7.5-MINUTE SERIES



Produced by the United States Geological Survey
North American Datum of 1983 (NAD83)
World Geodetic System of 1984 (WGS84) - Projection and
1 000-meter grid: Universal Transverse Mercator, Zone 16S
10 000-foot ticks: Indiana Coordinate System of 1983 (west
zone)

Imagery.....NAIP, June 2012
Roads.....©2006-2012 TomTom
Names.....GNIS, 2012
Hydrography.....National Hydrography Dataset, 2012
Contours.....National Elevation Dataset, 2004
Boundaries.....Census, IBG, USGS, 1972-2012

UTM GRID AND 2013 MAGNETIC NORTH
DECLINATION AT CENTER OF SHEET

3° 23' N
60 MILS
0° 17' N
5 MILS

U.S. National Grid
100,000-m Square ID
DJ
Grid Zone Designation
16S

SCALE 1:24 000

1 0.5 0 0.5 1 2
1000 500 0 500 1000 2000
KILOMETERS
1 0.5 0 0.5 1 2
1000 500 0 500 1000 2000
METERS
1 0.5 0 0.5 1 2
1000 500 0 500 1000 2000
MILES
1 0.5 0 0.5 1 2
1000 500 0 500 1000 2000
FEET

CONTOUR INTERVAL 10 FEET
NORTH AMERICAN VERTICAL DATUM OF 1988

This map was produced to conform with the
National Geospatial Program US Topo Product Standard, 2011.
A metadata file associated with this product is draft version 0.6.11



Hutton	Pimento	Levis
Fairbanks	Shelburn	Hymera
Merom	Sullivan	Dugger

ADJOINING 7.5' QUADRANGLES

ROAD CLASSIFICATION

Expressway
Secondary Hwy
Ramp
Interstate Route
Local Connector
Local Road
4WD
US Route
State Route

SHELburn, IN
2013