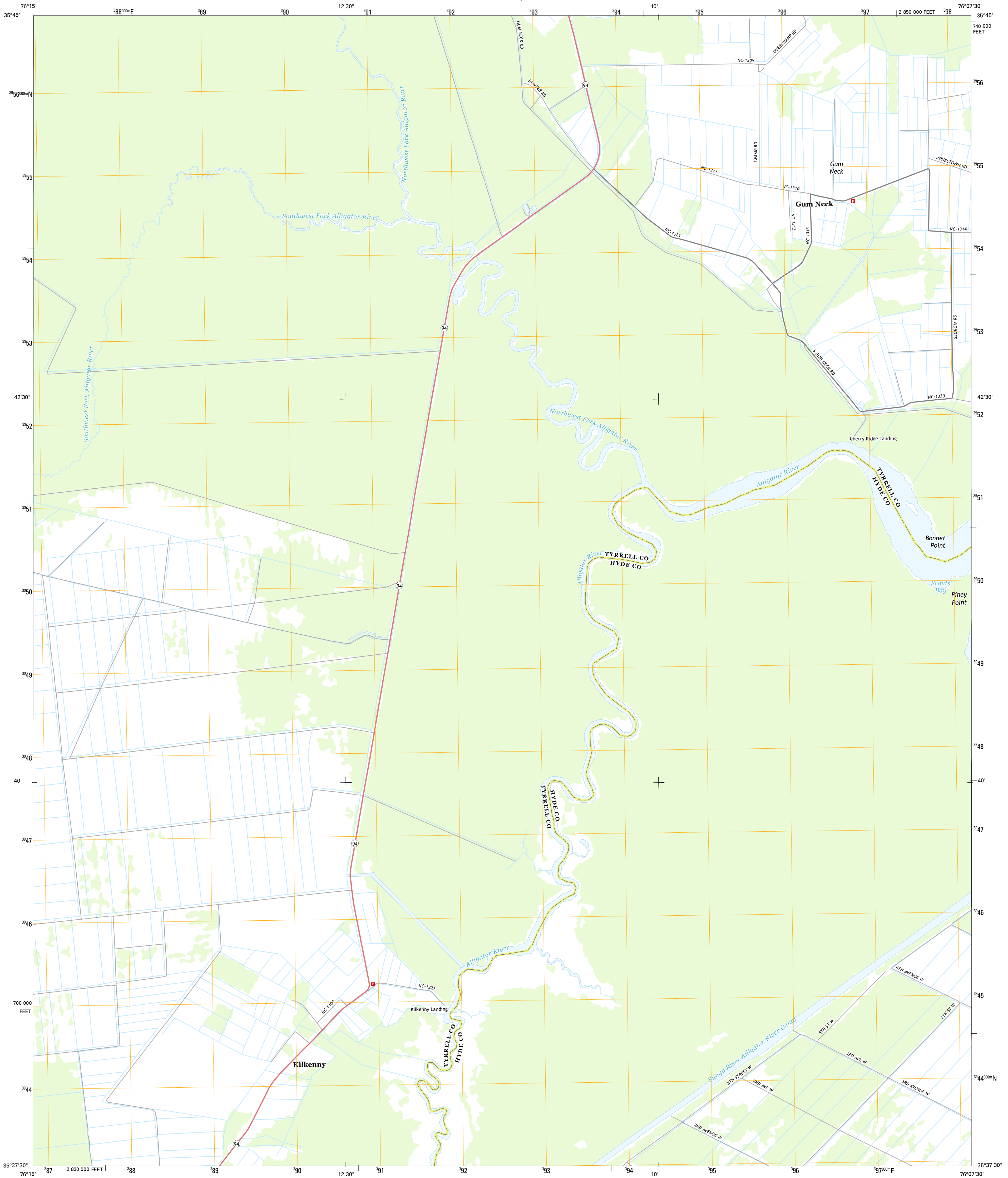




U.S. DEPARTMENT OF THE INTERIOR  
U. S. GEOLOGICAL SURVEY

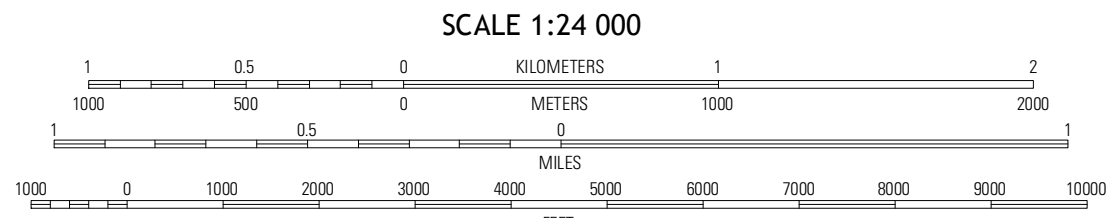
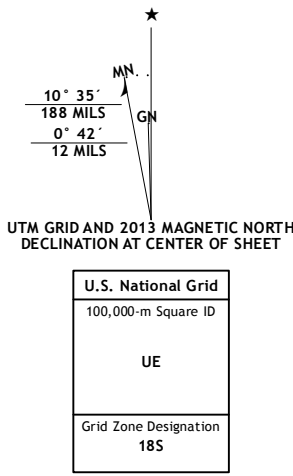


FAIRFIELD NW QUADRANGLE  
NORTH CAROLINA  
7.5-MINUTE SERIES



Produced by the United States Geological Survey  
North American Datum of 1983 (NAD83)  
World Geodetic System of 1984 (WGS84). Projection and  
1 000-meter grid: Universal Transverse Mercator, Zone 18S  
10 000-foot ticks: North Carolina Coordinate System of 1983

Imagery.....NAIP, June 2012  
Roads.....©2006-2012 TomTom  
Names.....GNIS, 2012  
Hydrography.....National Hydrography Dataset, 2012  
Contours.....Not Available  
Boundaries.....Census, IBWC, IBC, USGS, 1972 - 2012



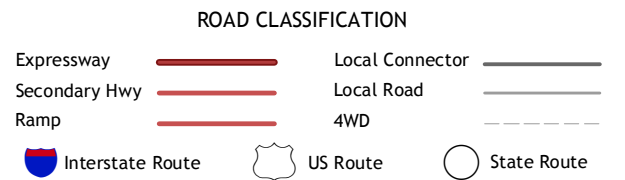
CONTOURS NOT PRESENT BECAUSE AVAILABLE ELEVATION  
DATA DO NOT MEET ACCURACY REQUIREMENTS

This map was produced to conform with the  
National Geospatial Program US Topo Product Standard, 2011.  
A metadata file associated with this product is draft version 0.6.11



QUADRANGLE LOCATION		
Cresswell SE	Scotia	Frying Pan
New Lake SE	Fairfield NW	Fairfield NE
New Lake SE	Fairfield	Engelhard West

ADJOINING 7.5 QUADRANGLES



FAIRFIELD NW, NC  
2013