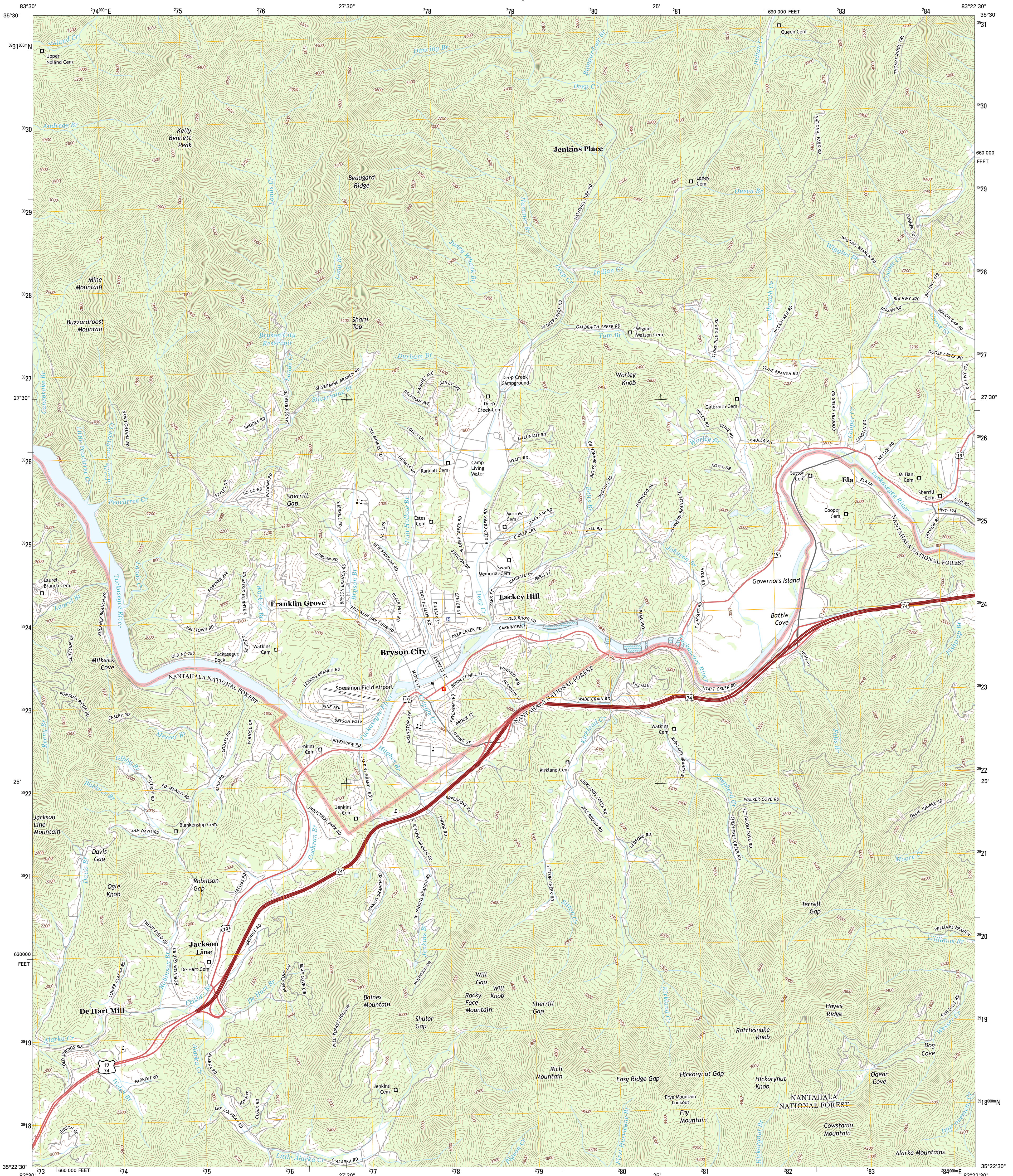




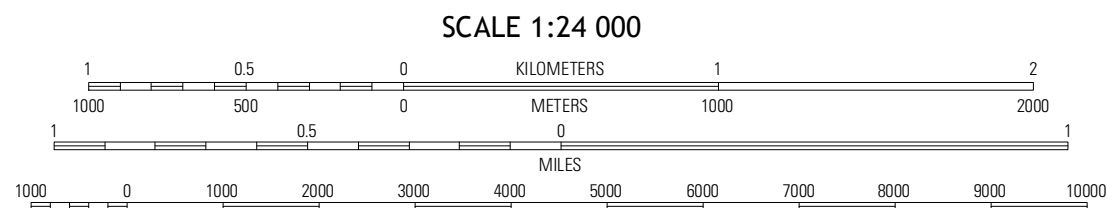
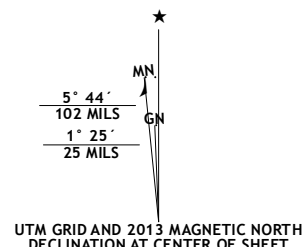
U.S. DEPARTMENT OF THE INTERIOR
U. S. GEOLOGICAL SURVEY



BRYSON CITY QUADRANGLE
NORTH CAROLINA-SWAIN CO.
7.5-MINUTE SERIES



Produced by the United States Geological Survey
North American Datum of 1983 (NAD83)
World Geodetic System of 1984 (WGS84) Projection and
1 000-meter grid: Universal Transverse Mercator, Zone 17S
10 000-foot ticks: North Carolina Coordinate System of 1983



ADJOINING 7.5 QUADRANGLES		
Siler Bald	Clingmans Dome	Smokemont
Noland Creek	Bryson City	Whittier
Wesser	Alarka	Green Creek

ROAD CLASSIFICATION	
Expressway	Local Connector
Secondary Hwy	Local Road
Interstate Route	4WD
FS Primary Route	US Route
FS Passenger Route	FS Passenger Route
	FS High Clearance Route

Check with local Forest Service unit
for current travel conditions and restrictions.

BRYSON CITY, NC
2013

Imagery.....NAIP, June 2012
Roads.....©2006-2012 TomTom
Roads within US Forest Service Lands
with limited Forest Service updates, 2012
Names.....©GNS, 2013
Hydrography.....National Hydrography Dataset, 2012
Contours.....National Elevation Dataset, 2008
Boundaries.....Census, BWC, IBC, USGS, 1972-2012

U.S. National Grid	
100,000-m Square ID	KV
Grid Zone Designation	17S

CONTOUR INTERVAL 40 FEET
NORTH AMERICAN VERTICAL DATUM OF 1988
This map was produced to conform with the
National Geospatial Program US Topo Product Standard, 2011.
A metadata file associated with this product is draft version 0.6.11