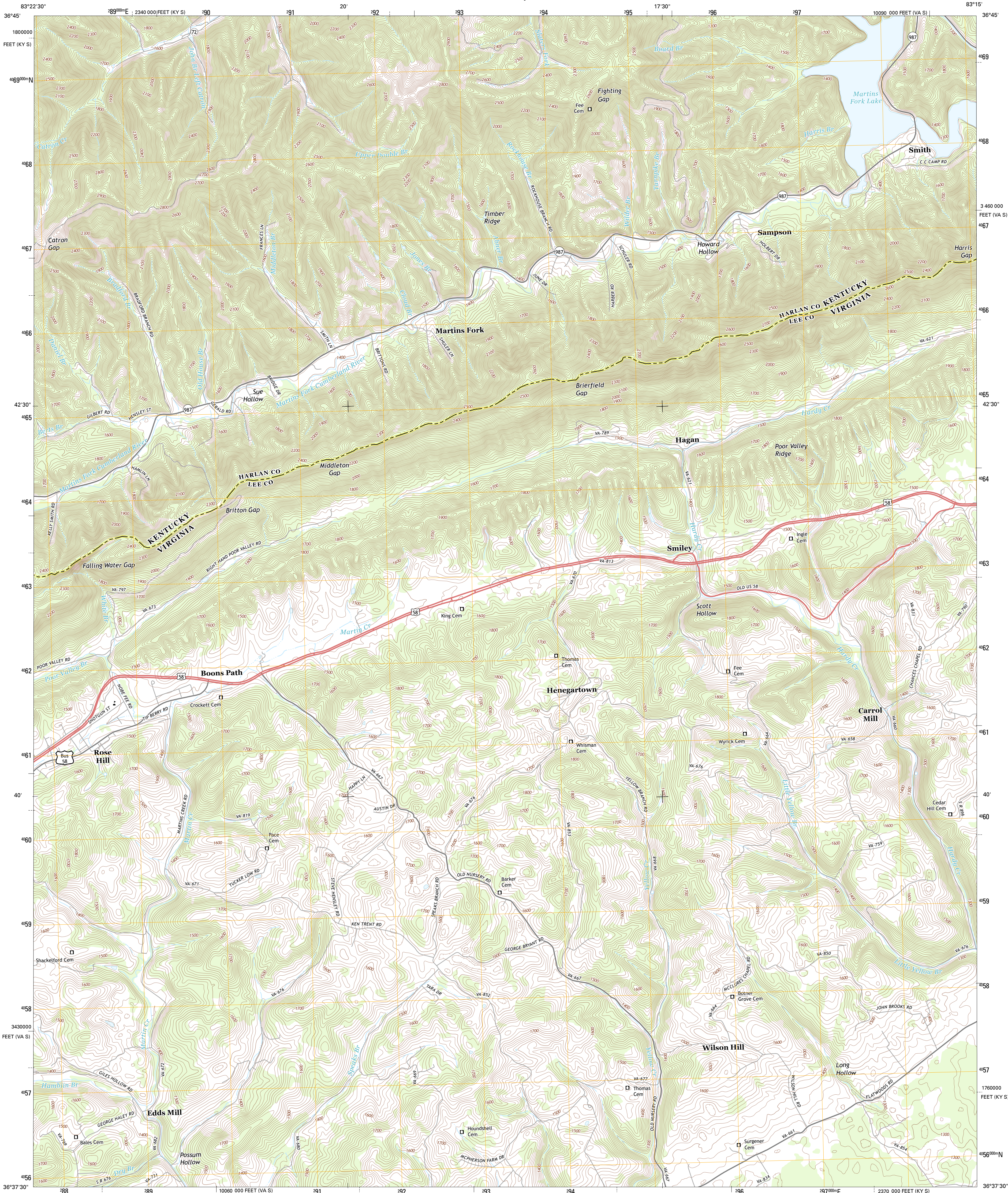




U.S. DEPARTMENT OF THE INTERIOR  
U. S. GEOLOGICAL SURVEY



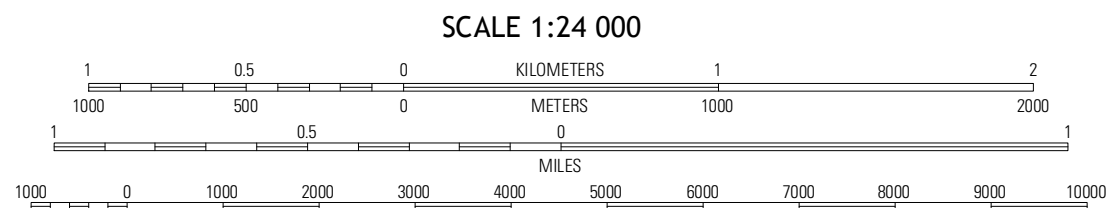
ROSE HILL QUADRANGLE  
VIRGINIA-KENTUCKY  
7.5-MINUTE SERIES



Produced by the United States Geological Survey  
North American Datum of 1983 (NAD83)  
Roads: ©2006-2012 TomTom  
Names: ©2013  
Hydrography: National Hydrography Dataset, 2012  
Contours: National Elevation Dataset, 2002  
Boundaries: Census, BWC, IBC, USGS, 1972-2012

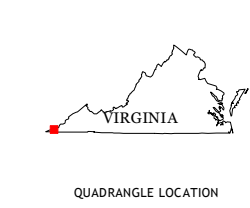
UTM GRID AND 2013 MAGNETIC NORTH  
DECLINATION AT CENTER OF SHEET

|                       |
|-----------------------|
| U.S. National Grid    |
| 100,000-m Square ID   |
| KA                    |
| Grid Zone Designation |
| 17S                   |



CONTOUR INTERVAL 20 FEET  
NORTH AMERICAN VERTICAL DATUM OF 1988

This map was produced to conform with the  
National Geospatial Program US Topo Product Standard, 2011.  
A metadata file associated with this product is draft version 0.6.11



ROAD CLASSIFICATION

|                  |                 |
|------------------|-----------------|
| Expressway       | Local Connector |
| Secondary Hwy    | Local Road      |
| Ramp             | 4WD             |
| Interstate Route | US Route        |
|                  | State Route     |

|               |             |                 |
|---------------|-------------|-----------------|
| Wallins Creek | Harlan      | Burts           |
| Ewing         | Rose Hill   | Hubbard Springs |
| Coleman Gap   | Back Valley | Shedville       |

ROSE HILL, VA-KY  
2013