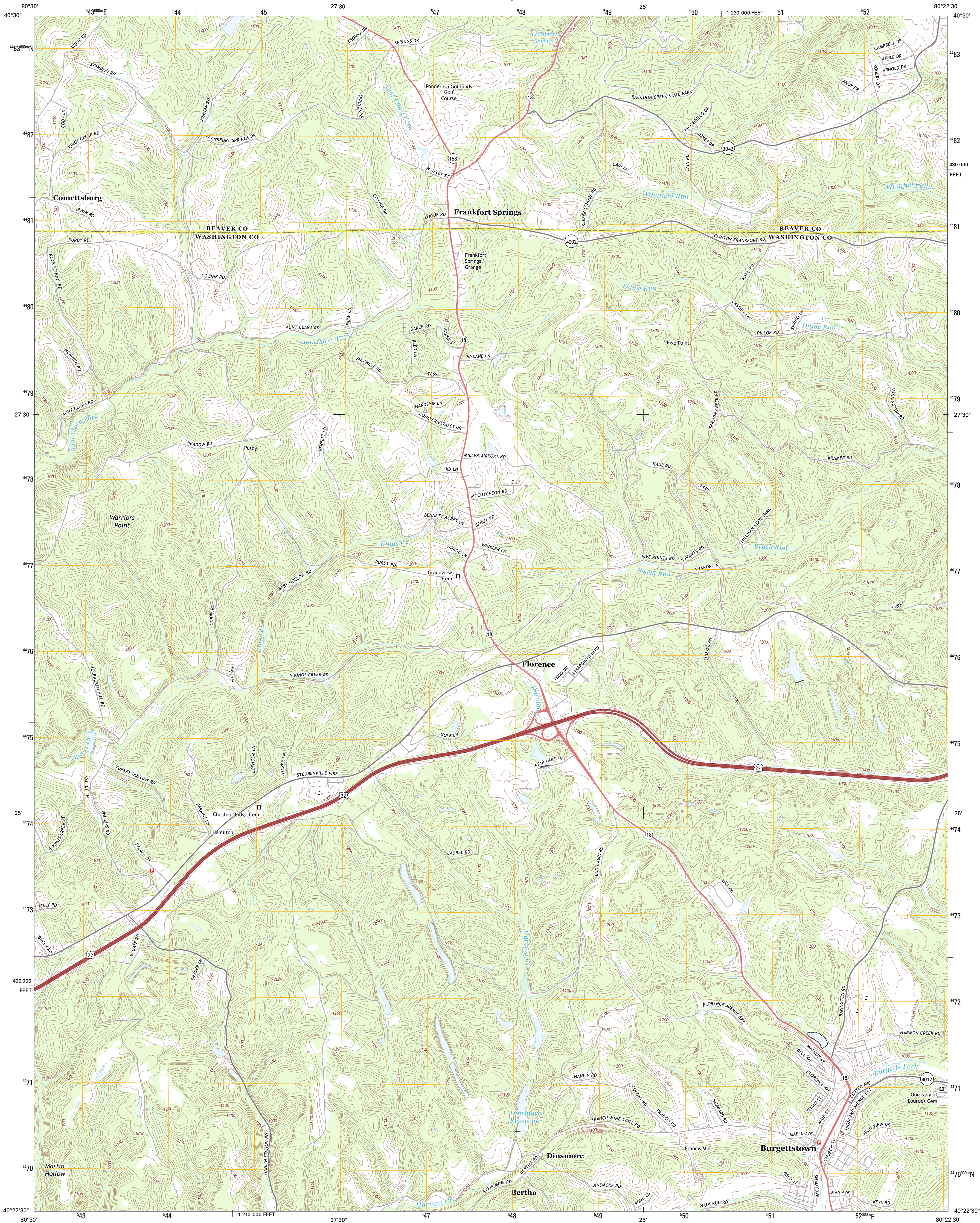




U.S. DEPARTMENT OF THE INTERIOR
U. S. GEOLOGICAL SURVEY

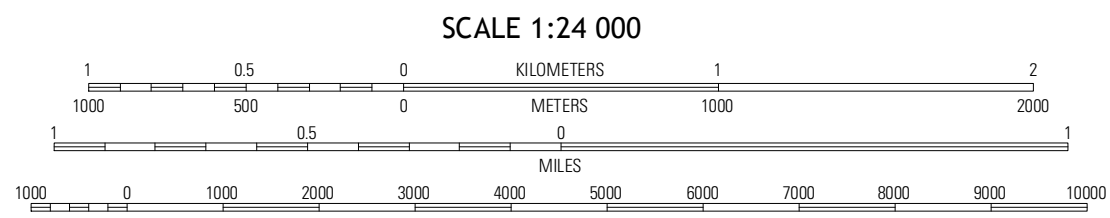
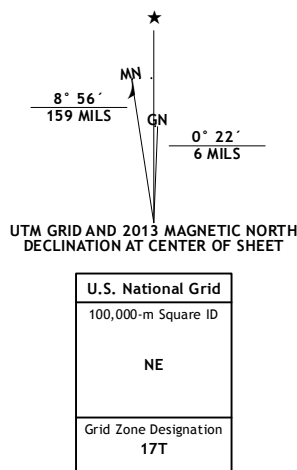


BURGETTSTOWN QUADRANGLE
PENNSYLVANIA
7.5-MINUTE SERIES

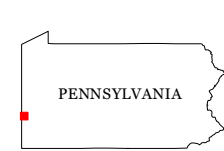


Produced by the United States Geological Survey
North American Datum of 1983 (NAD83)
Roads: ©2006-2012, TomTom
Names: ©2006-2012, TomTom
1 000-meter grid: Universal Transverse Mercator, Zone 17T
10 000-foot ticks: Pennsylvania Coordinate System of 1983 (south zone)

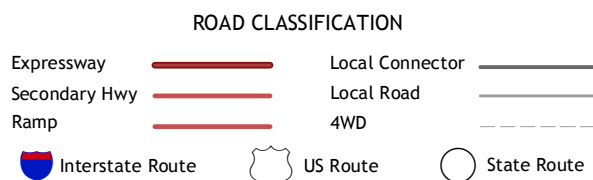
Imagery: NAIP, June 2010
Roads: ©2006-2012, TomTom
Names: ©2006-2012, TomTom
Hydrography: National Hydrography Dataset, 2010
Contours: National Elevation Dataset, 2010
Boundaries: Census, IBW, IBC, USGS, 1972-2012



CONTOUR INTERVAL 20 FEET
NORTH AMERICAN VERTICAL DATUM OF 1988
This map was produced to conform with the
National Geospatial Program US Topo Product Standard, 2011.
A metadata file associated with this product is draft version 0.6.11



QUADRANGLE LOCATION		
East	Hookstown	Aliquippa
Liverpool		
South		
Weirton	Burgettstown	Clinton
Steubenville		
East	Avella	Midway



BURGETTSTOWN, PA
2013

ADJOINING 7.5 QUADRANGLES