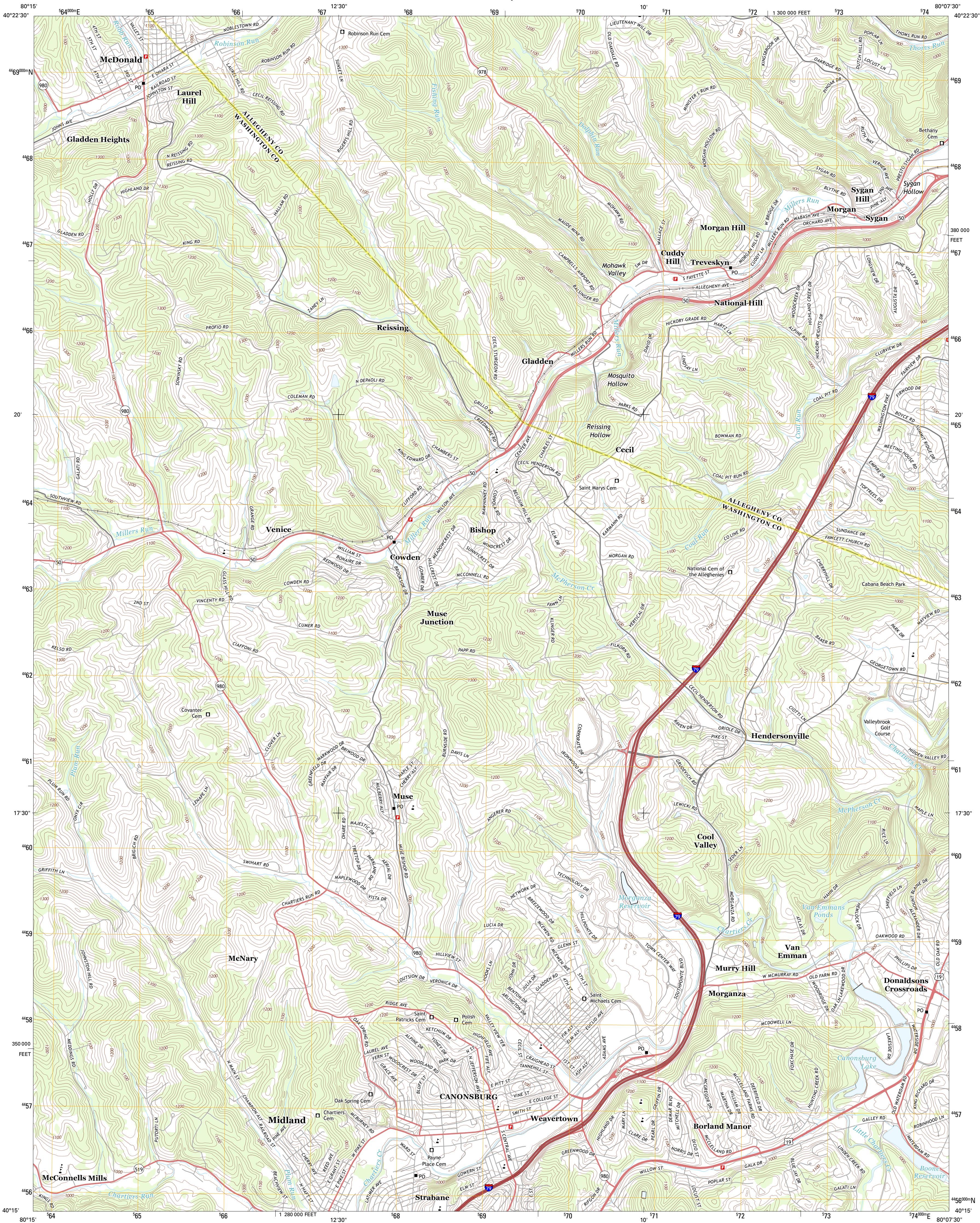




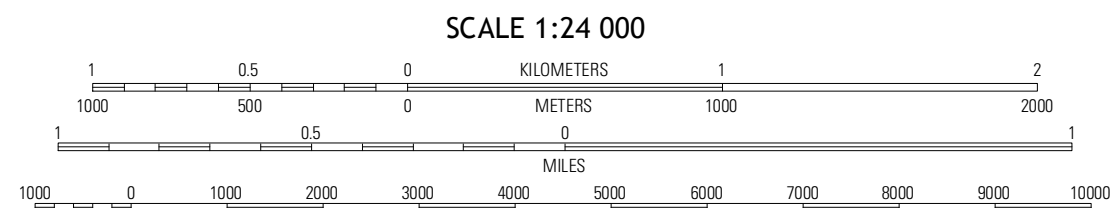
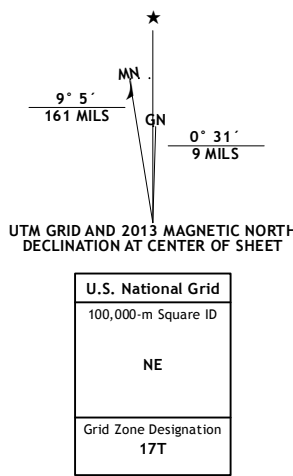
U.S. DEPARTMENT OF THE INTERIOR
U. S. GEOLOGICAL SURVEY



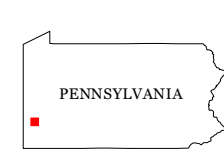
CANONSBURG QUADRANGLE
PENNSYLVANIA
7.5-MINUTE SERIES



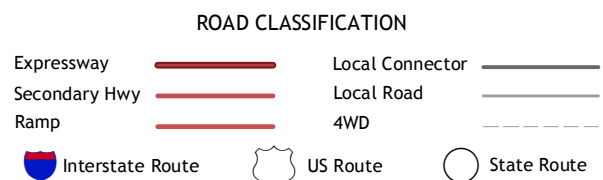
Produced by the United States Geological Survey
North American Datum of 1983 (NAD83)
World Geodetic System of 1984 (WGS84) Projection and
1 000-meter grid: Universal Transverse Mercator, Zone 17T
10 000-foot ticks: Pennsylvania Coordinate System of 1983
(south zone)



CONTOUR INTERVAL 20 FEET
NORTH AMERICAN VERTICAL DATUM OF 1988
This map was produced to conform with the
National Geospatial Program US Topo Product Standard, 2011.
A metadata file associated with this product is draft version 0.6.11



QUADRANGLE LOCATION		
Clinton	Oakdale	Pittsburgh West
Midway	Canonsburg	Bridgeville
Washington West	Washington East	Hackett



CANONSBURG, PA
2013

ADJOINING 7.5' QUADRANGLES