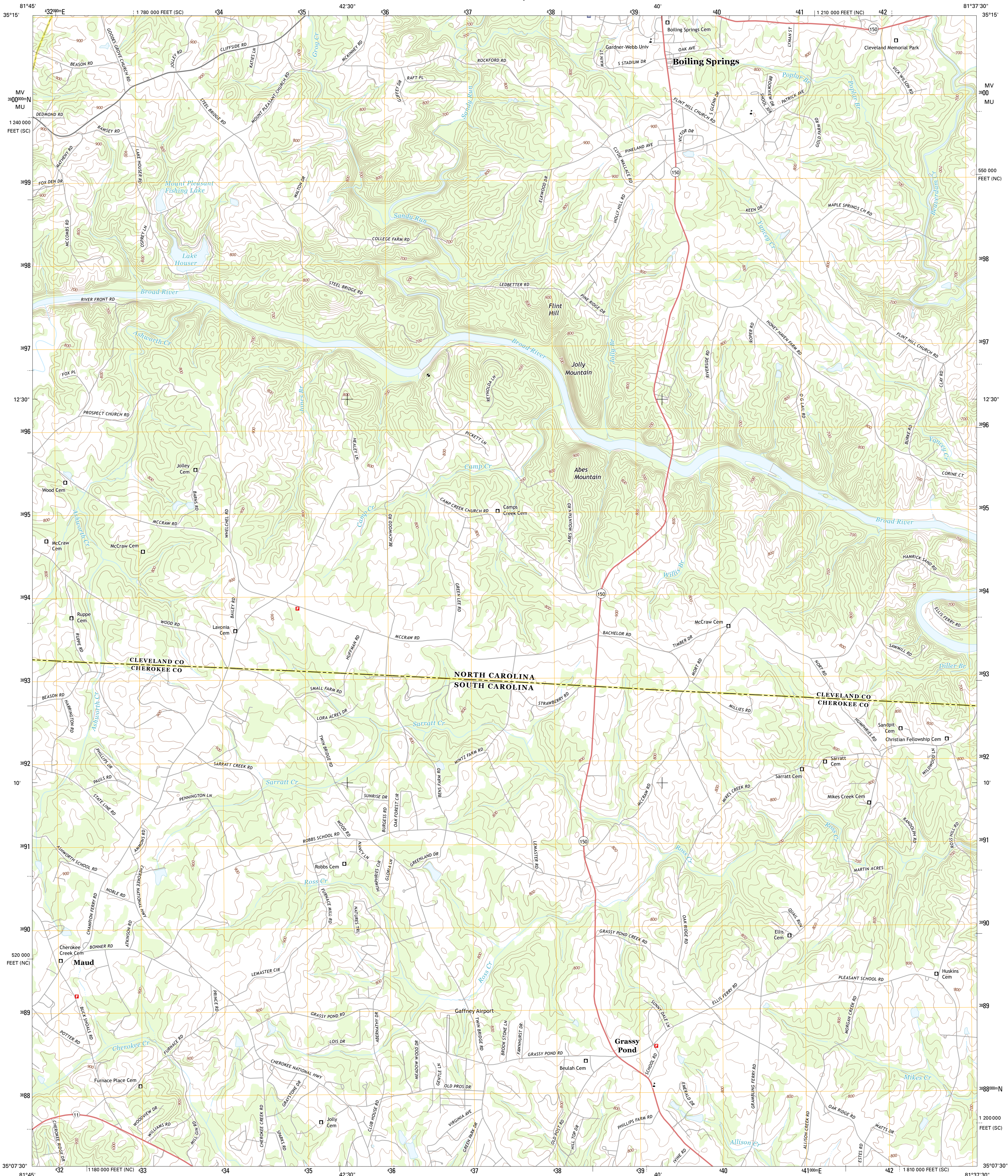




U.S. DEPARTMENT OF THE INTERIOR  
U. S. GEOLOGICAL SURVEY



BOILING SPRINGS SOUTH QUADRANGLE  
NORTH CAROLINA-SOUTH CAROLINA  
7.5-MINUTE SERIES



Produced by the United States Geological Survey  
North American Datum of 1983 (NAD83)  
World Geodetic System of 1984 (WGS84), Projection and  
1 000-meter grid: Universal Transverse Mercator, Zone 17S  
10 000-foot ticks: North Carolina Coordinate System of 1983,  
South Carolina Coordinate System of 1983

Imagery.....NAIP, June 2012  
Roads.....©2006-2012 TomTom  
Names.....GNIS, 2013  
Hydrography.....National Hydrography Dataset, 2012  
Contours.....National Elevation Dataset, 2011  
Boundaries.....Census, IBWC, IBC, USGS, 1972-2012

UTM GRID AND 2013 MAGNETIC NORTH  
DECLINATION AT CENTER OF SHEET

U.S. National Grid
100,000-m Square ID
MV 700
Grid Zone Designation
17S

SCALE 1:24 000

1 000 0 0.5 1 2 KILOMETERS

1000 0 500 0 500 1000 2000 METERS

1 0 1000 2000 3000 4000 5000 6000 7000 8000 9000 10000 FEET

CONTOUR INTERVAL 20 FEET  
NORTH AMERICAN VERTICAL DATUM OF 1988

This map was produced to conform with the  
National Geospatial Program US Topo Product Standard, 2011.  
A metadata file associated with this product is draft version 0.6.11



QUADRANGLE LOCATION		
Forest City	Boiling Springs North	Shelby
Cherokee	Boiling Springs South	Blacksburg North
Cowpens	Gaffney	Blacksburg South

ADJOINING 7.5 QUADRANGLES

ROAD CLASSIFICATION

Expressway      Local Connector  
Secondary Hwy      Local Road  
Ramp      4WD

Interstate Route      US Route      State Route

BOILING SPRINGS SOUTH, NC-SC  
2013