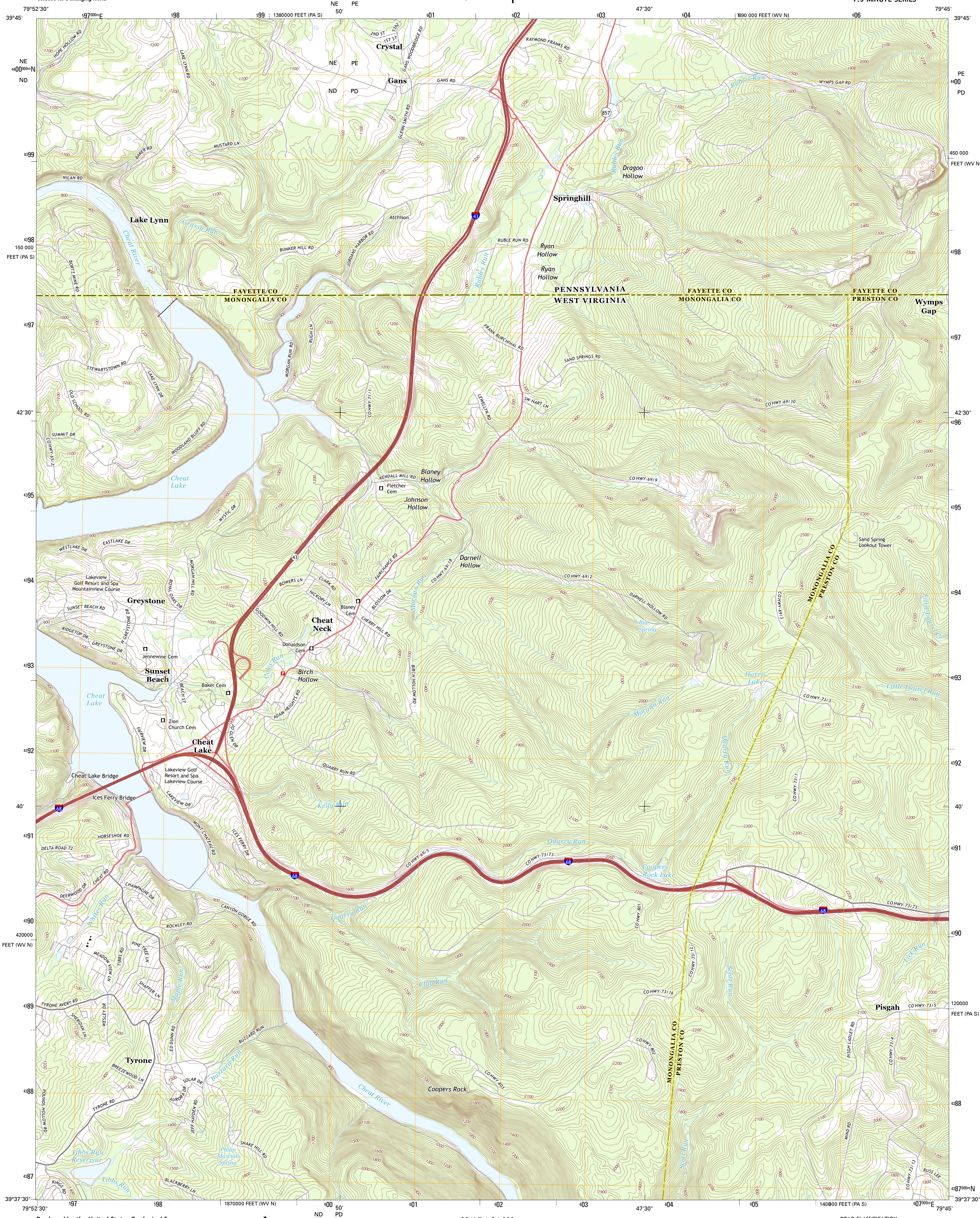




U.S. DEPARTMENT OF THE INTERIOR  
U. S. GEOLOGICAL SURVEY

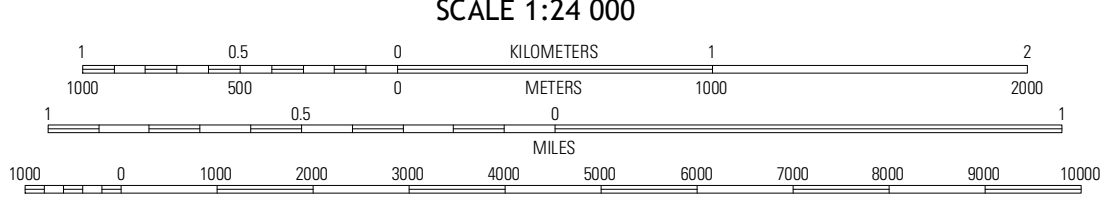
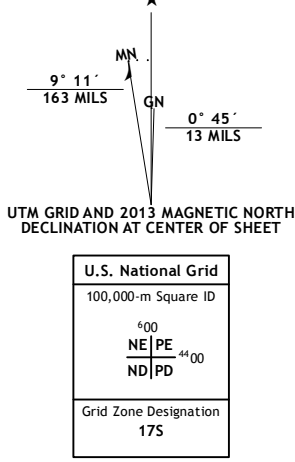


LAKE LYNN QUADRANGLE  
PENNSYLVANIA-WEST VIRGINIA  
7.5-MINUTE SERIES

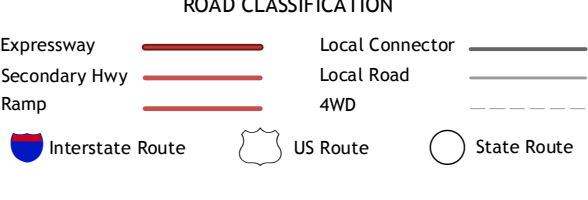


Produced by the United States Geological Survey  
North American Datum of 1983 (NAD83)  
World Geodetic System of 1984 (WGS84). Projection and  
1 000-meter grid: Universal Transverse Mercator. Zone 17S  
10 000-foot ticks: West Virginia Coordinate System of 1983  
(north zone), Pennsylvania Coordinate System of 1983 (south  
zone)

Imagery.....NAIP, July 2009 - August 2009  
Roads.....©2006-2012 TomTom  
Names.....GNIS, 2013  
Hydrography.....National Hydrography Dataset, 2009  
Contours.....National Elevation Dataset, 1999  
Boundaries.....Census, IBWC, IBC, USGS, 1972 - 2012



CONTOUR INTERVAL 20 FEET  
NORTH AMERICAN VERTICAL DATUM OF 1988  
This map was produced to conform with the  
National Geospatial Program US Topo Product Standard, 2011.  
A metadata file associated with this product is draft version 0.6.11



ADJOINING 7.5 QUADRANGLES		
Masontown	Smithfield	Brownfield
Morgantown North	Lake Lynn	Bruceston Mills
Morgantown South	Masontown	Valley Point

LAKE LYNN, PA-WV  
2013