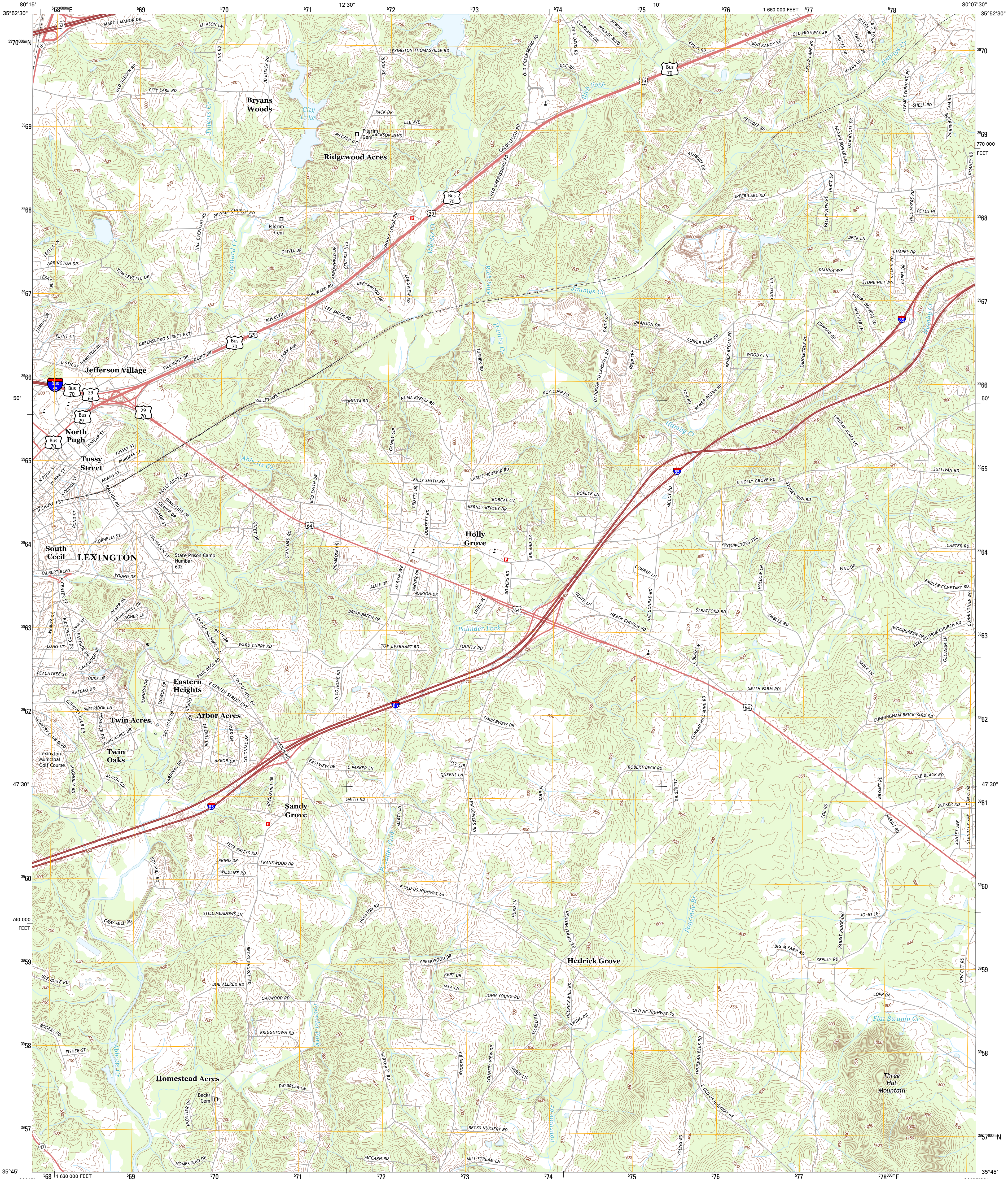




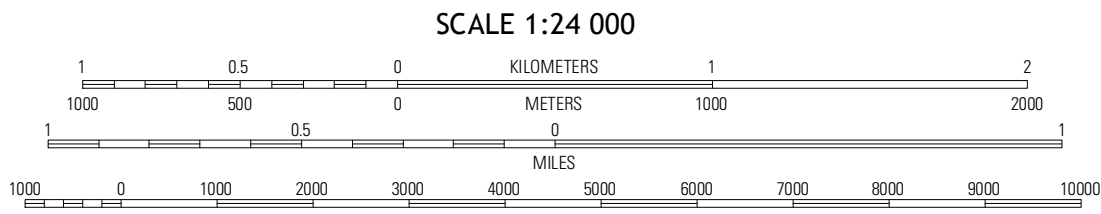
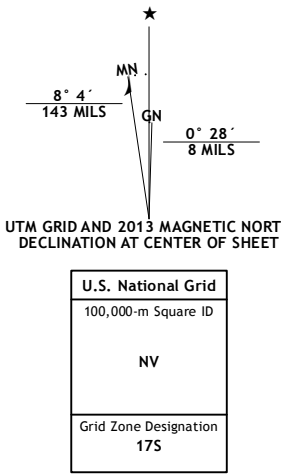
U.S. DEPARTMENT OF THE INTERIOR
U. S. GEOLOGICAL SURVEY



LEXINGTON EAST QUADRANGLE
NORTH CAROLINA-DAVIDSON CO.
7.5-MINUTE SERIES

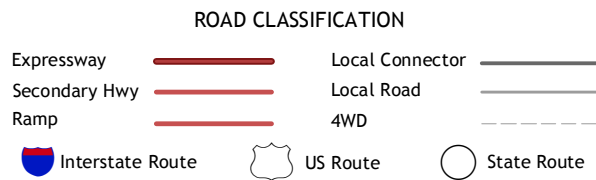


Produced by the United States Geological Survey
North American Datum of 1983 (NAD83)
World Geodetic System of 1984 (WGS84). Projection and
1000-meter grid: Universal Transverse Mercator, Zone 17S
10 000-foot ticks: North Carolina Coordinate System of 1983



QUADRANGLE LOCATION		
Welcome	Midway	High Point West
Lexington West	Lexington East	Fair Grove
Southmont	Grist Mountain	Denton

ADJOINING 7.5 QUADRANGLES



LEXINGTON EAST, NC
2013