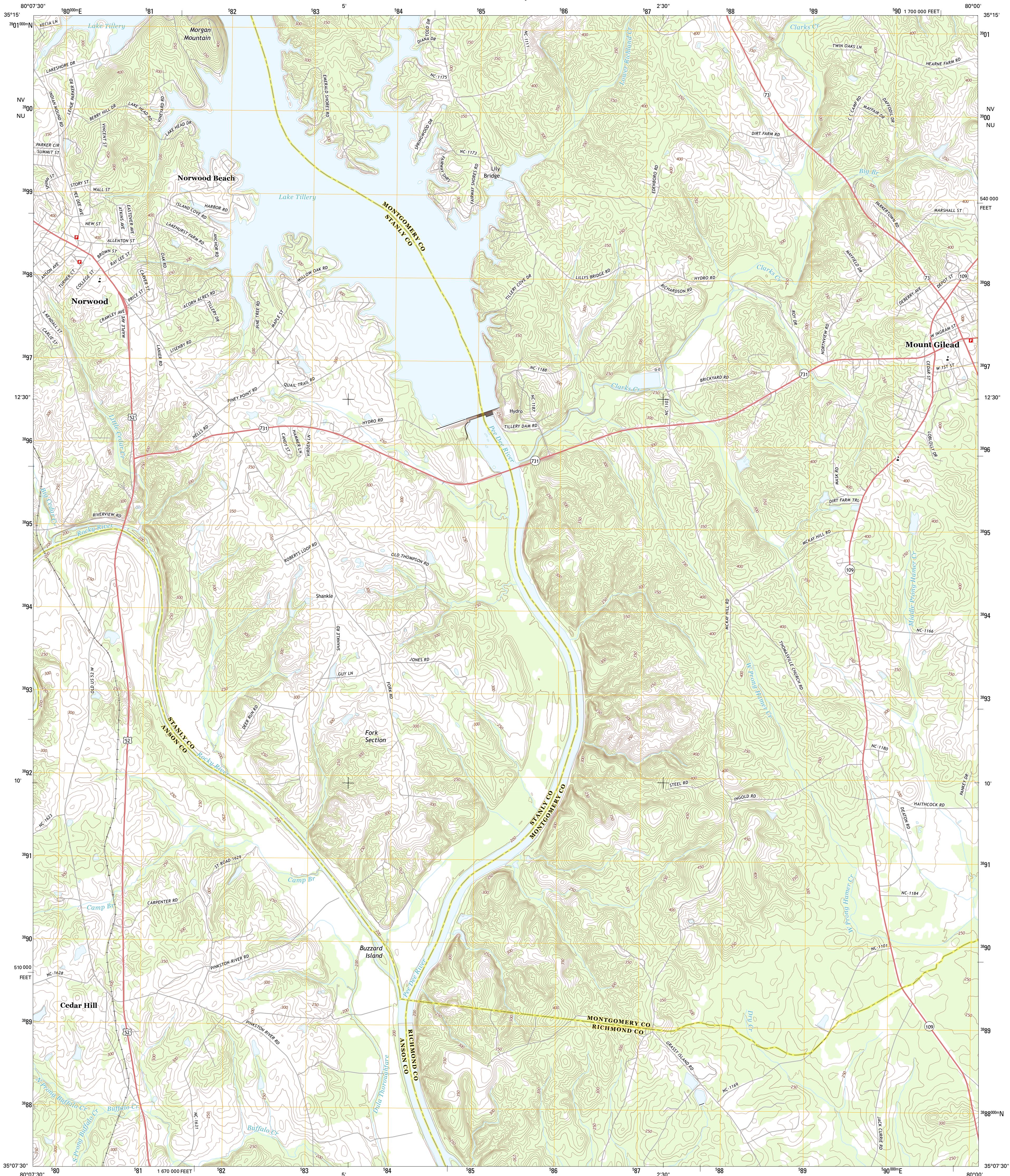




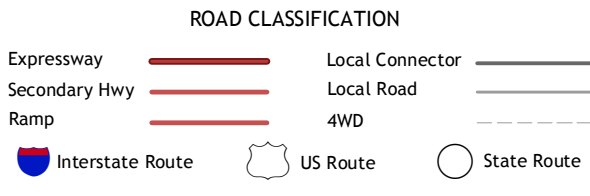
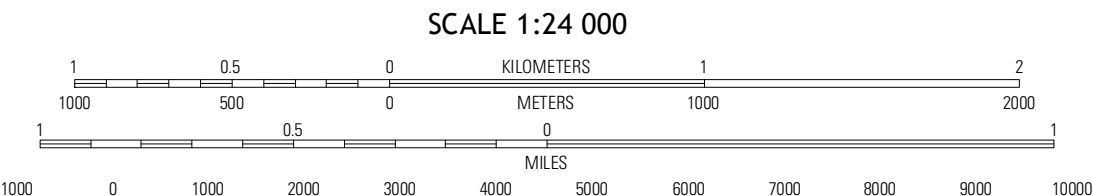
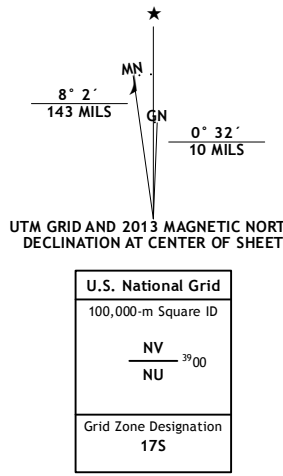
U.S. DEPARTMENT OF THE INTERIOR
U. S. GEOLOGICAL SURVEY



MOUNT GILEAD WEST QUADRANGLE
NORTH CAROLINA
7.5-MINUTE SERIES



Produced by the United States Geological Survey
North American Datum of 1983 (NAD83)
World Geodetic System of 1984 (WGS84) Projection and
1 000-meter grid: Universal Transverse Mercator, Zone 17S
10 000-foot ticks: North Carolina Coordinate System of 1983



QUADRANGLE LOCATION

Albemarle	Morrow Mountain	Troy
Aquidale	Mount Gilead West	Mount Gilead East
Pulaski	Ansonville	Mangum

MOUNT GILEAD WEST, NC
2013

ADJOINING 7.5 QUADRANGLES