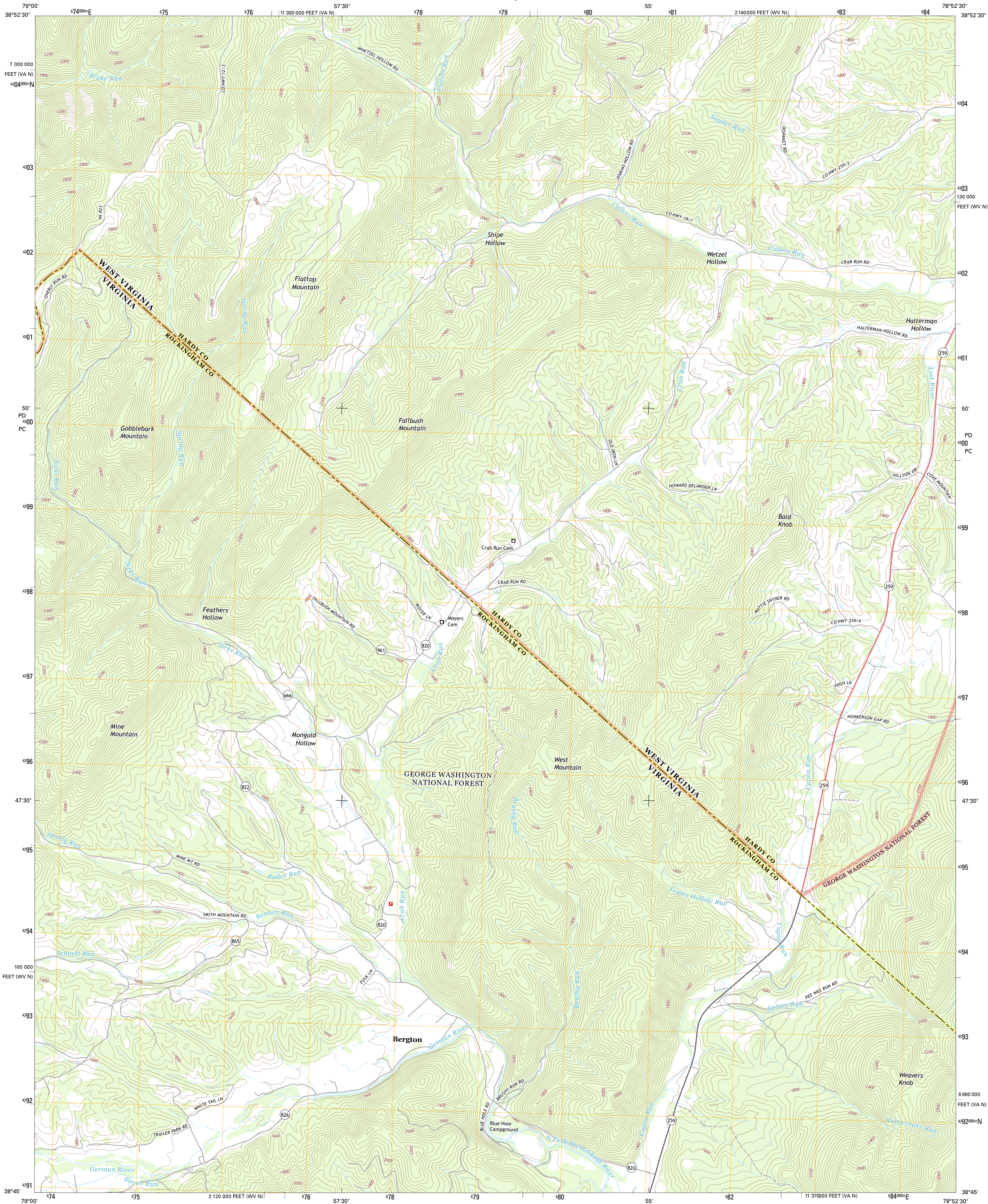




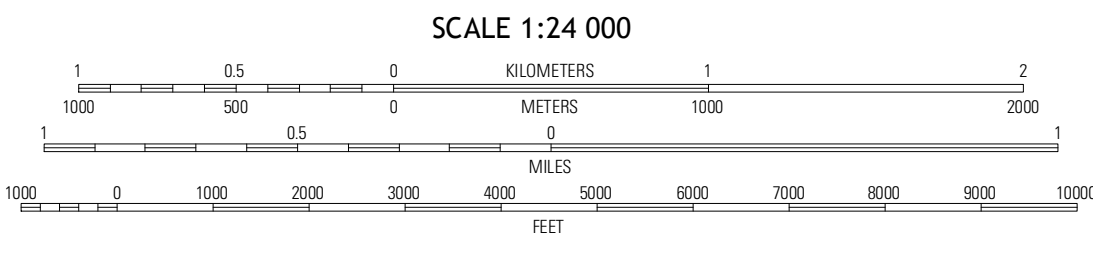
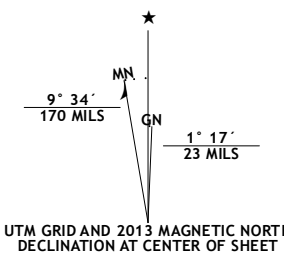
U.S. DEPARTMENT OF THE INTERIOR
U. S. GEOLOGICAL SURVEY



BERGTON QUADRANGLE
VIRGINIA-WEST VIRGINIA
7.5-MINUTE SERIES



Produced by the United States Geological Survey
North American Datum of 1983 (NAD83)
World Geodetic System of 1984 (WGS84). Projection and
1000-meter grid: Universal Transverse Mercator, Zone 17S
10 000-foot ticks: West Virginia Coordinate System of 1983
(north zone), Virginia Coordinate System of 1983 (north zone)



ADJOINING 7.5 QUADRANGLES		
Petersburg East	Lost River State Park	Lost City
Millam	Bergton	Orkney Springs
Cow Knob	Falks Run	Timberville

ROAD CLASSIFICATION		
Expressway	Local Connector	State Route
Secondary Hwy	Local Road	FS High
Ramp	4WD	FS Passenger Route
FS Interstate Route	US Route	Clearance Route

Check with local Forest Service unit for current travel conditions and restrictions.

BERGTON, VA-WV
2013