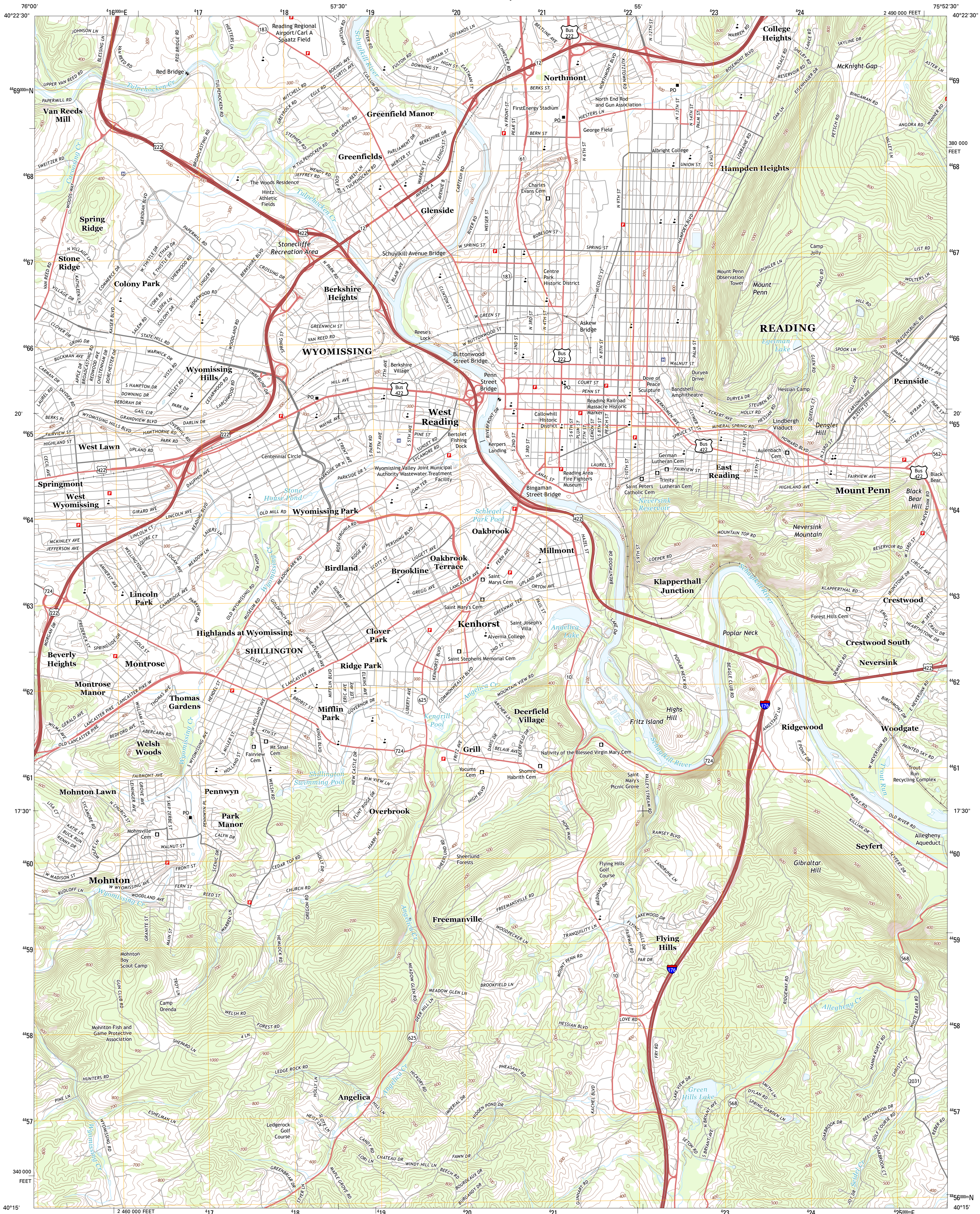




U.S. DEPARTMENT OF THE INTERIOR
U. S. GEOLOGICAL SURVEY

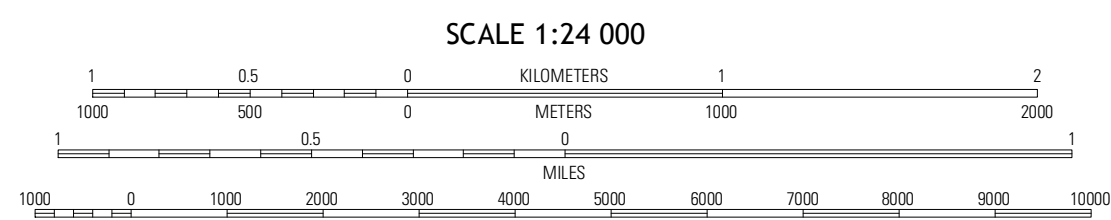
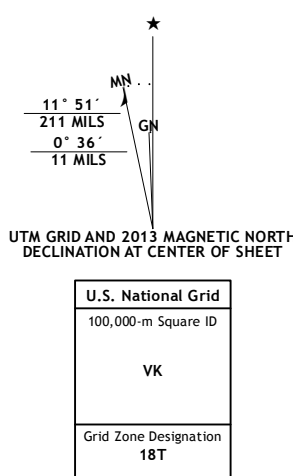


READING QUADRANGLE
PENNSYLVANIA-BERKS CO.
7.5-MINUTE SERIES

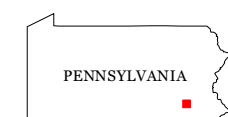


Produced by the United States Geological Survey
North American Datum of 1983 (NAD83)
World Geodetic System of 1984 (WGS84). Projection and
1 000-meter grid: Universal Transverse Mercator, Zone 18T
10 000-foot ticks: Pennsylvania Coordinate System of 1983
(south zone)

Imagery.....NAIP, July 2010
Roads.....©2006-2012, TomTom
Names.....©2006-2012, TomTom
Hydrography.....National Hydrography Dataset, 2010
Contours.....National Elevation Dataset, 2011
Boundaries.....Census, IBW, IBC, USGS, 1972-2012



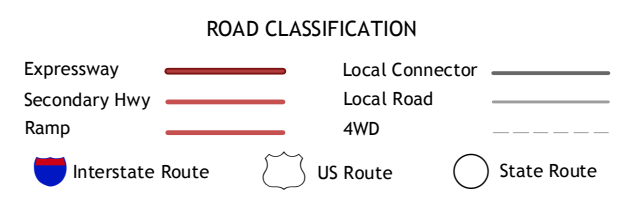
CONTOUR INTERVAL 20 FEET
NORTH AMERICAN VERTICAL DATUM OF 1988
This map was produced to conform with the
National Geospatial Program US Topo Product Standard, 2011.
A metadata file associated with this product is draft version 0.6.11



QUADRANGLE LOCATION

| | | |
|----------------|------------|-----------|
| Bernville | Temple | Fleetwood |
| Sinking Spring | Reading | Birdsboro |
| Terre Hill | Morgantown | Elverson |

ADJOINING 7.5 QUADRANGLES



READING, PA
2013