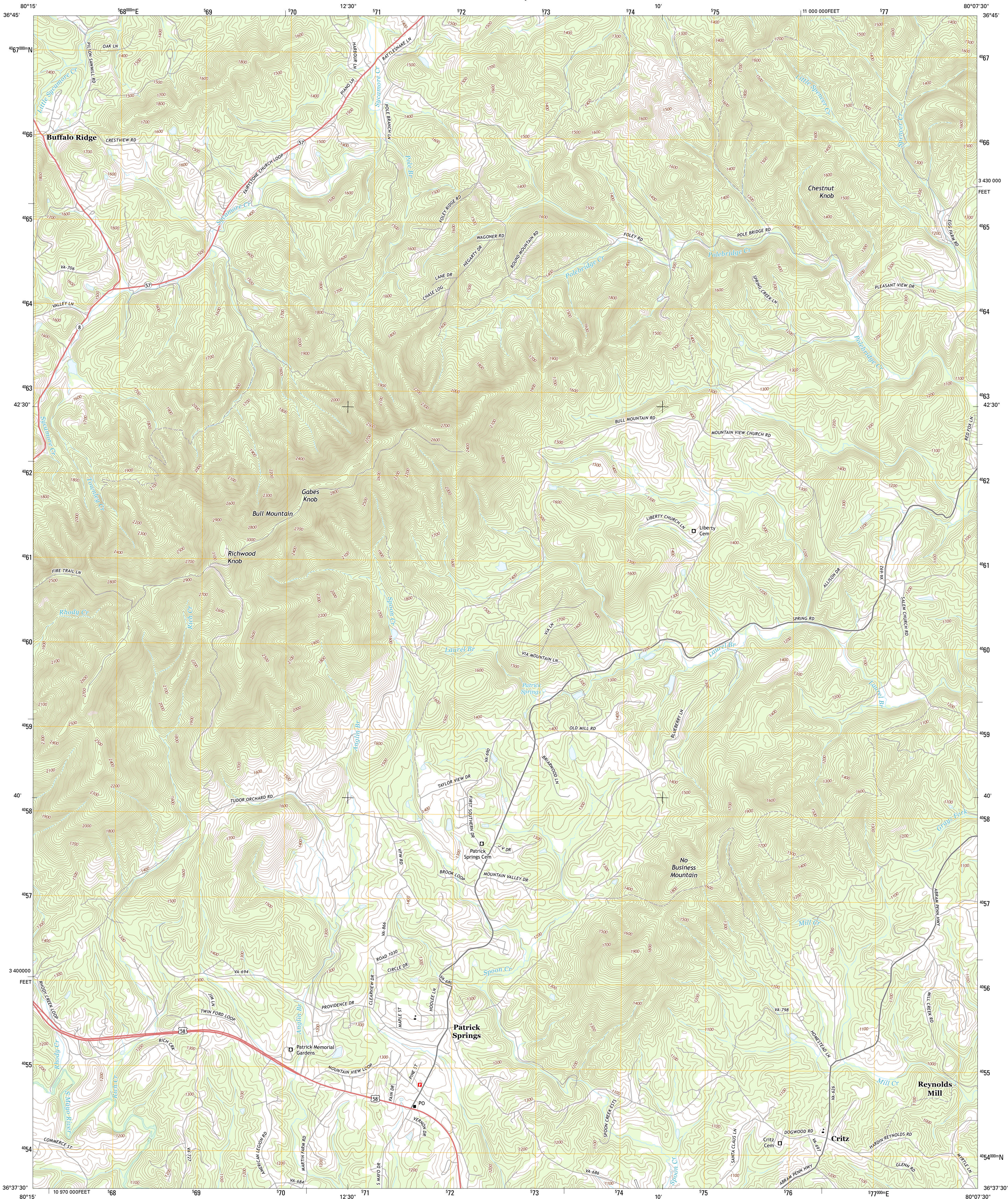




U.S. DEPARTMENT OF THE INTERIOR
U. S. GEOLOGICAL SURVEY

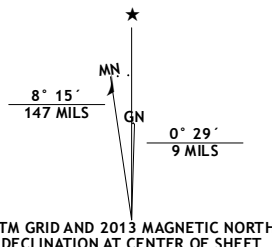


PATRICK SPRINGS QUADRANGLE
VIRGINIA-PATRICK CO.
7.5-MINUTE SERIES

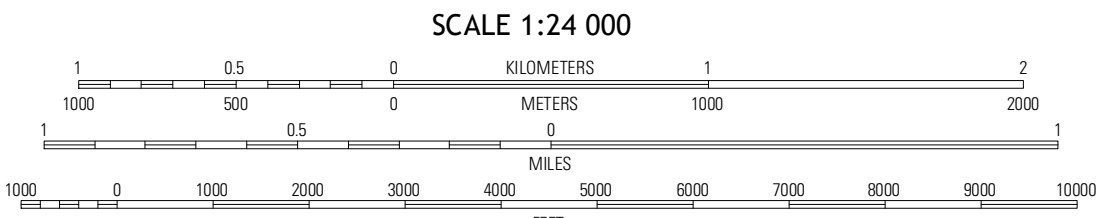


Produced by the United States Geological Survey
North American Datum of 1983 (NAD83)
World Geodetic System of 1984 (WGS84) Projection and
1 000-meter grid: Universal Transverse Mercator, Zone 17S
10 000-foot ticks: Virginia Coordinate System of 1983 (south zone)

Imagery.....NAIP, June 2012
Roads.....©2006-2012 TomTom
Names.....GNIS, 2013
Hydrography.....National Hydrography Dataset, 2012
Contours.....National Elevation Dataset, 1999
Boundaries.....Census, IBWC, IBC, USGS, 1972 - 2012



U.S. National Grid
100,000-m Square ID
NA
Grid Zone Designation
17S

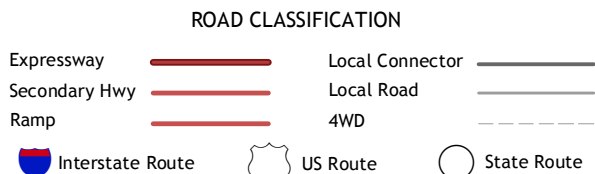


CONTOUR INTERVAL 20 FEET
NORTH AMERICAN VERTICAL DATUM OF 1988
This map was produced to conform with the
National Geospatial Program US Topo Product Standard, 2011.
A metadata file associated with this product is draft version 0.6.11



Woolwine	Charity	Philpott Lake
Stuart	Patrick Springs	Sanville
Stuart SE	Nettelridge	Spencer

ADJOINING 7.5 QUADRANGLES



PATRICK SPRINGS, VA
2013