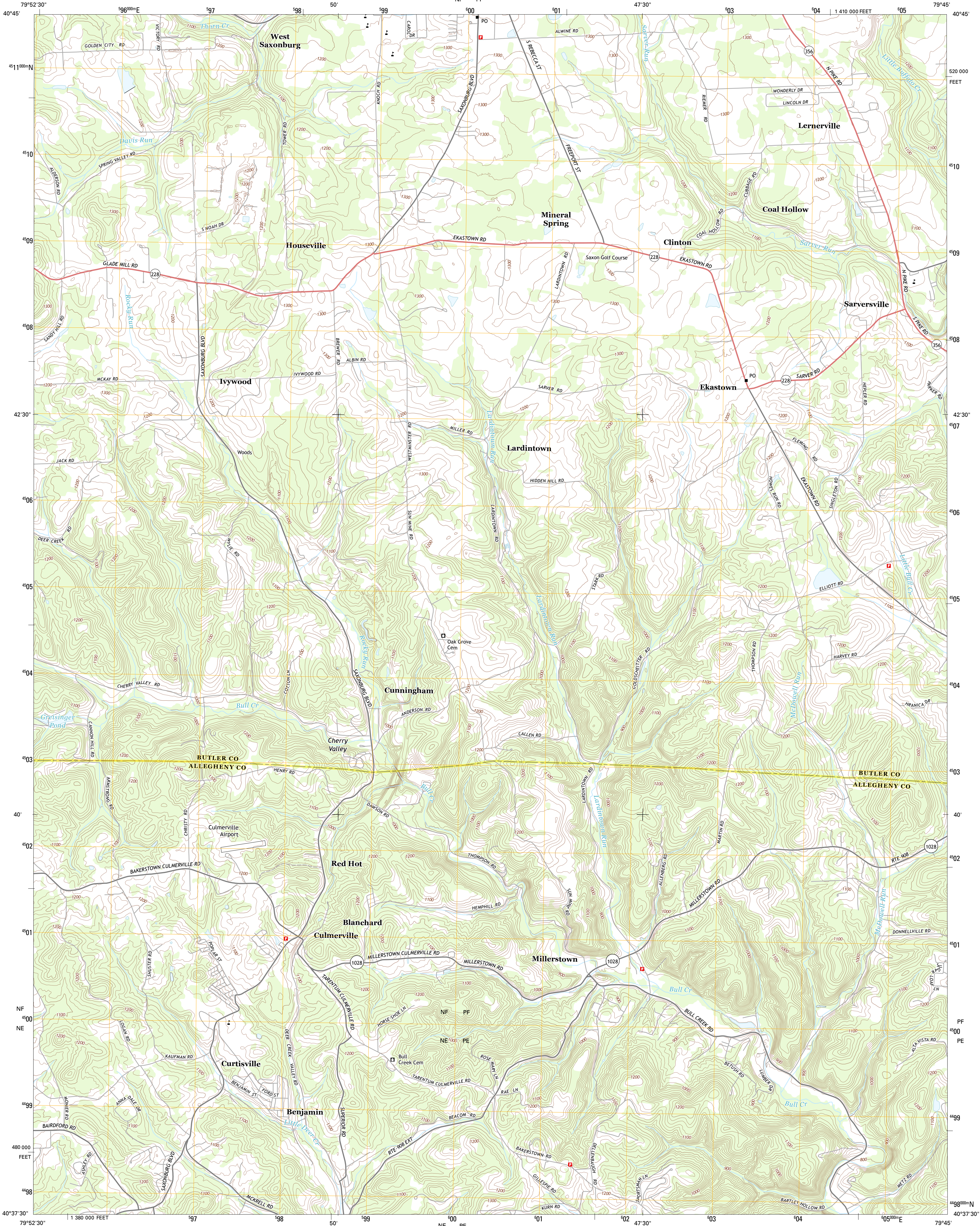




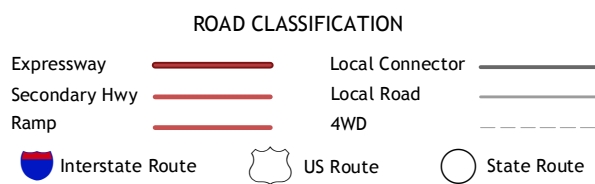
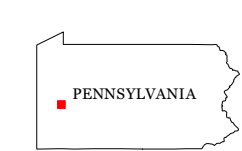
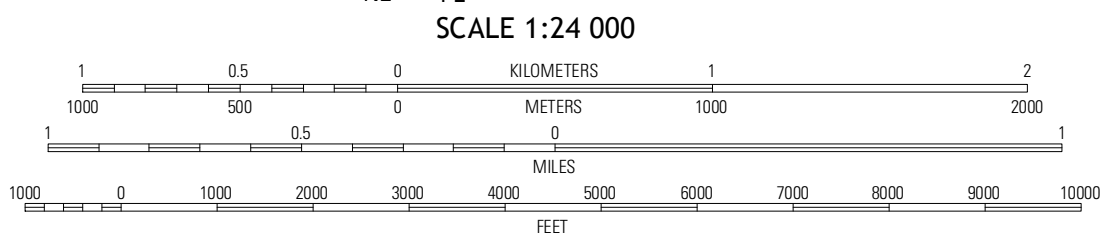
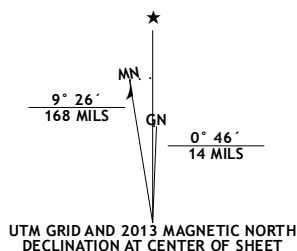
U.S. DEPARTMENT OF THE INTERIOR
U. S. GEOLOGICAL SURVEY



CURTISVILLE QUADRANGLE
PENNSYLVANIA
7.5-MINUTE SERIES



Produced by the United States Geological Survey
North American Datum of 1983 (NAD83)
World Geodetic System of 1984 (WGS84) Projection and
1 000-meter grid; Universal Transverse Mercator, Zone 17T
10 000-foot ticks; Pennsylvania Coordinate System of 1983
(south zone)



QUADRANGLE LOCATION

Butler	Saxtonburg	Worthington
Valencia	Curtisville	Freeport
Glenshaw	New Kensington West	New Kensington East

ADJOINING 7.5 QUADRANGLES

Imagery.....NAIP, June 2010
Roads.....©2006-2012, TomTom
Names.....©2013, TomTom
Hydrography.....National Hydrography Dataset, 2010
Contours.....National Elevation Dataset, 2010
Boundaries.....Census, IBWC, IBC, USGS, 1972 - 2012

U.S. National Grid
100,000-m Square ID

100	NF	PF	000
100	NE	PE	

Grid Zone Designation
17T

CONTOUR INTERVAL 20 FEET
NORTH AMERICAN VERTICAL DATUM OF 1988
This map was produced to conform with the
National Geospatial Program US Topo Product Standard, 2011.
A metadata file associated with this product is draft version 0.6.11

CURTISVILLE, PA
2013