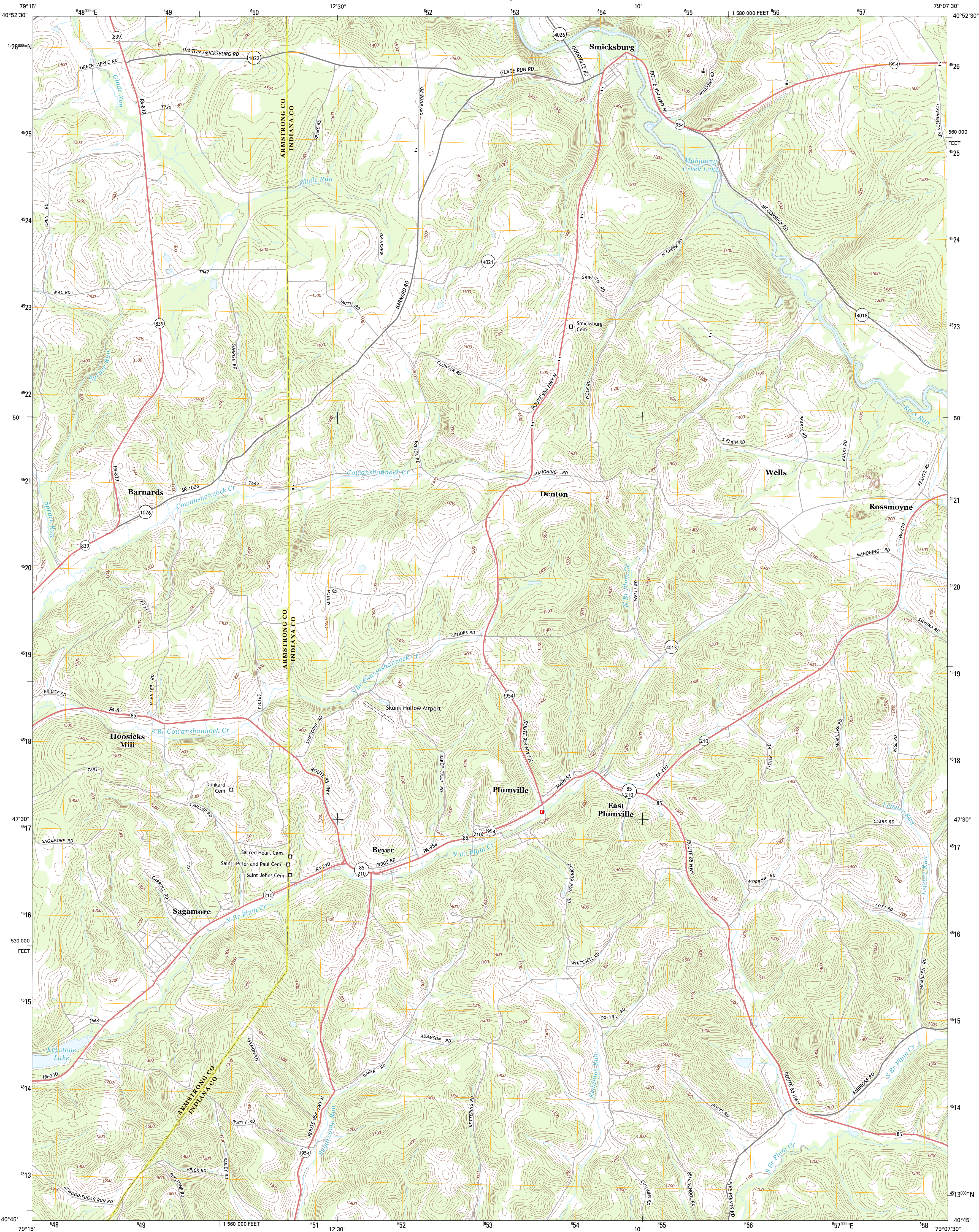




U.S. DEPARTMENT OF THE INTERIOR  
U. S. GEOLOGICAL SURVEY

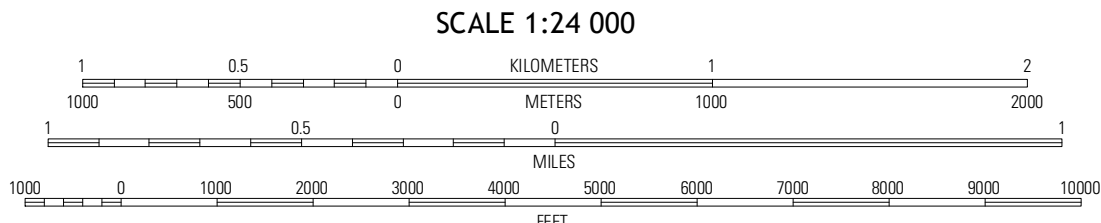
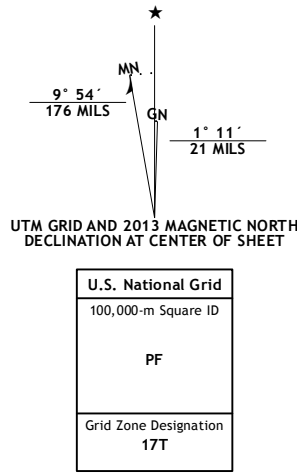


PLUMVILLE QUADRANGLE  
PENNSYLVANIA  
7.5-MINUTE SERIES

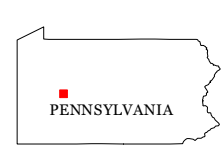


Produced by the United States Geological Survey  
North American Datum of 1983 (NAD83)  
World Geodetic System of 1984 (WGS84) Projection and  
1 000-meter grid: Universal Transverse Mercator, Zone 17T  
10 000-foot ticks: Pennsylvania Coordinate System of 1983  
(south zone)

Imagery.....NAIP, June 2010  
Roads.....©2006-2012 TomTom  
Names.....GNS, 2013  
Hydrography.....National Hydrography Dataset, 2010  
Contours.....National Elevation Dataset, 2010  
Boundaries.....Census, IBWC, IBC, USGS, 1972 - 2012



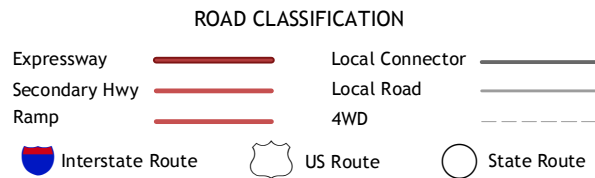
This map was produced to conform with the  
National Geospatial Program US Topo Product Standard, 2011.  
A metadata file associated with this product is draft version 0.6.11



QUADRANGLE LOCATION

Distant	Duylon	Valley
Rural	Plumville	Marion
Center		
Blderton	Ernest	Clymer

ADJOINING 7.5' QUADRANGLES



PLUMVILLE, PA  
2013