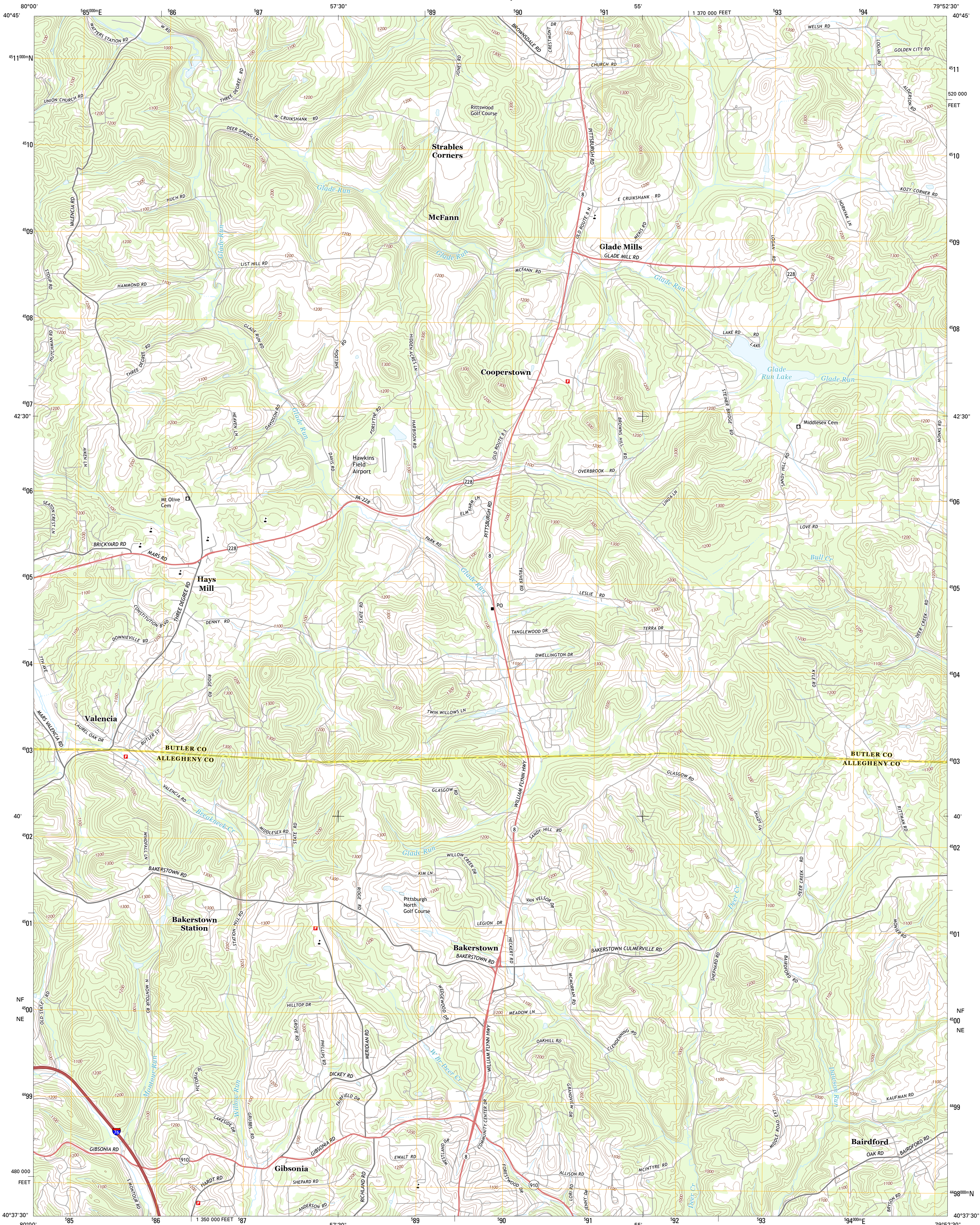




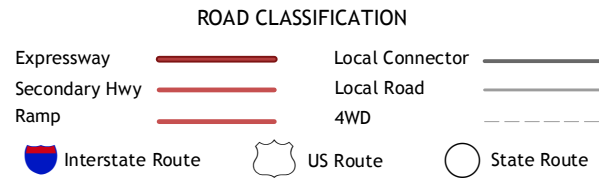
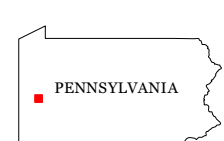
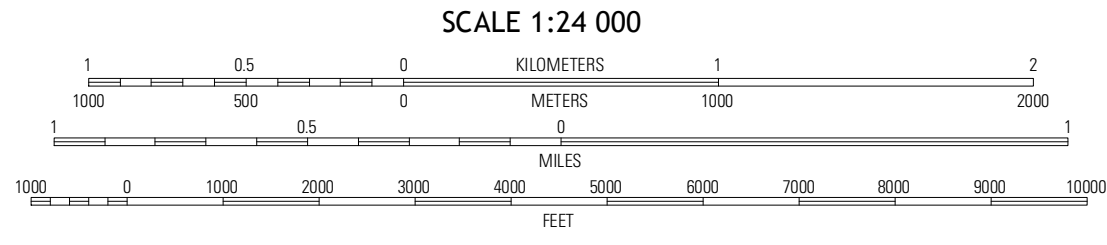
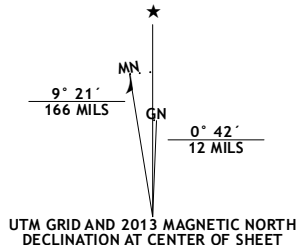
U.S. DEPARTMENT OF THE INTERIOR
U. S. GEOLOGICAL SURVEY



VALENCIA QUADRANGLE
PENNSYLVANIA
7.5-MINUTE SERIES



Produced by the United States Geological Survey
North American Datum of 1983 (NAD83)
World Geodetic System of 1984 (WGS84)
1 000-meter grid; Universal Transverse Mercator, Zone 17T
10 000-foot ticks; Pennsylvania Coordinate System of 1983
(south zone)



QUADRANGLE LOCATION

Byas City	Butler	Saxonburg
Mars	Valencia	Curtisville
Emmeworth	Glenshaw	New Kensington West

ADJOINING 7.5 QUADRANGLES

VALENCIA, PA
2013