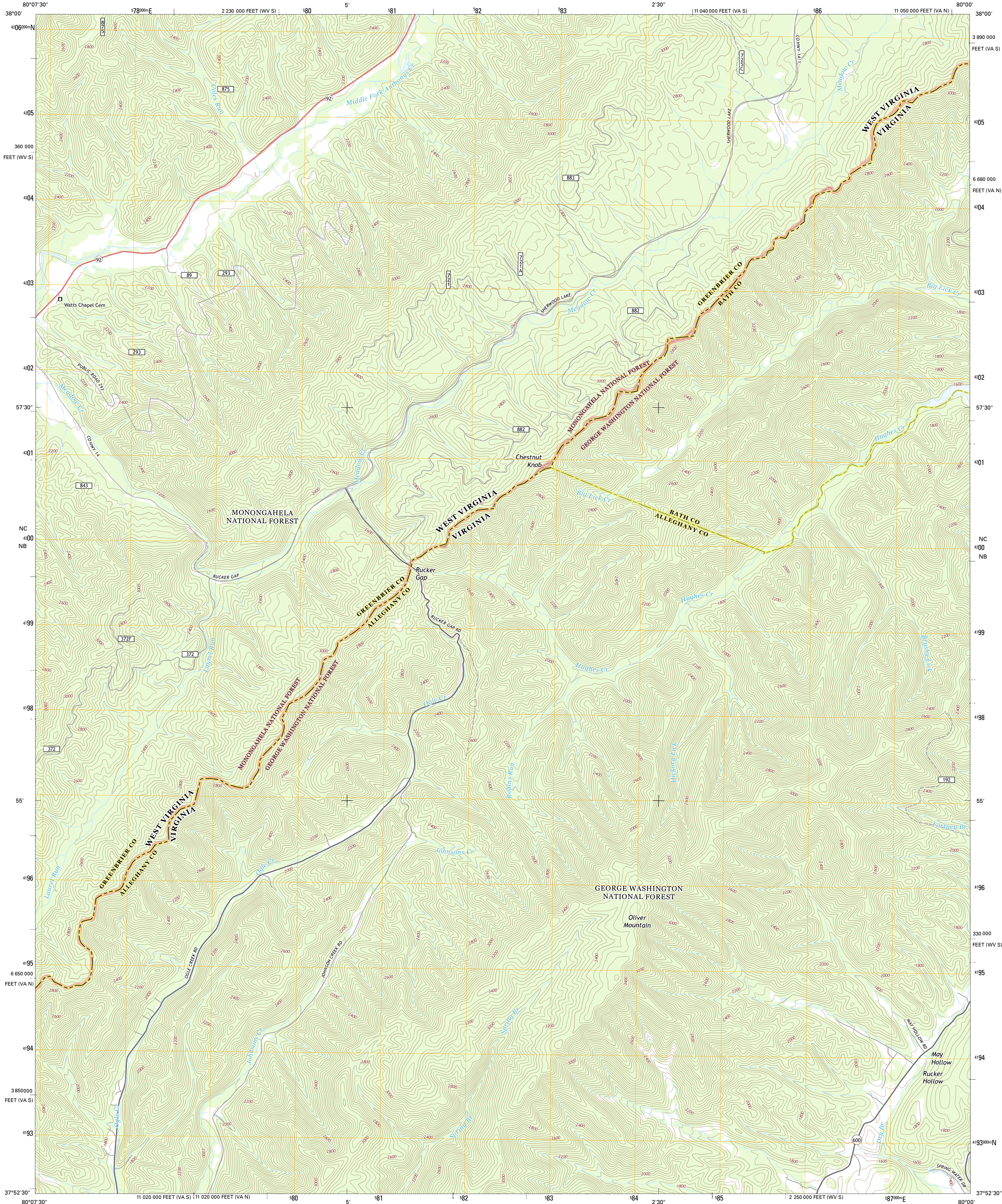




U.S. DEPARTMENT OF THE INTERIOR  
U. S. GEOLOGICAL SURVEY



RUCKER GAP QUADRANGLE  
VIRGINIA-WEST VIRGINIA  
7.5-MINUTE SERIES



Produced by the United States Geological Survey  
North American Datum of 1983 (NAD83)  
World Geodetic System of 1984 (WGS84) - Projection and  
1 000-meter grid: Universal Transverse Mercator, Zone 17S  
10 000-foot ticks: Virginia Coordinate System of 1983 (south and  
north zones), West Virginia Coordinate System of 1983 (south  
zone)

Imagery.....NAIP, September 2012  
Roads.....2006-2012, TomTom  
Roads within US Forest Service Lands  
with limited Forest Service updates, 2013  
Names.....GNIS, 2013  
Hydrography.....National Hydrography Dataset, 2012  
Contours.....National Elevation Dataset, 2006  
Boundaries.....Census, IBWC, IBC, USGS, 1972 - 2012

UTM GRID AND 2013 MAGNETIC NORTH  
DECLINATION AT CENTER OF SHEET

U.S. National Grid
100,000-m Square ID
NC
NB
Grid Zone Designation
17S

SCALE 1:24 000

1 0.5 0 0.5 1 2  
1000 500 0 500 1000  
KILOMETERS  
1 0.5 0 0.5 1 2  
1000 500 0 500 1000  
METERS  
1 0 1000 2000 3000 4000 5000 6000 7000 8000 9000 10000  
MILES  
FEET

CONTOUR INTERVAL 40 FEET  
NORTH AMERICAN VERTICAL DATUM OF 1988

This map was produced to conform with the  
National Geospatial Program US Topo Product Standard, 2011.  
A metadata file associated with this product is draft version 0.6.11



QUADRANGLE LOCATION		
Denmar	Lake Sherwood	Mountain Grove
Alvon	Rucker Gap	Falling Spring
Jerry's Run	Callaghan	Covington

ROAD CLASSIFICATION

Expressway  
Secondary Hwy  
Ramp  
Interstate Route  
FS Primary Route

Local Connector  
Local Road  
4WD  
US Route  
FS Passenger Route  
FS High Clearance Route

State Route

Check with local Forest Service unit  
for current travel conditions and restrictions.

RUCKER GAP, VA-WV  
2013