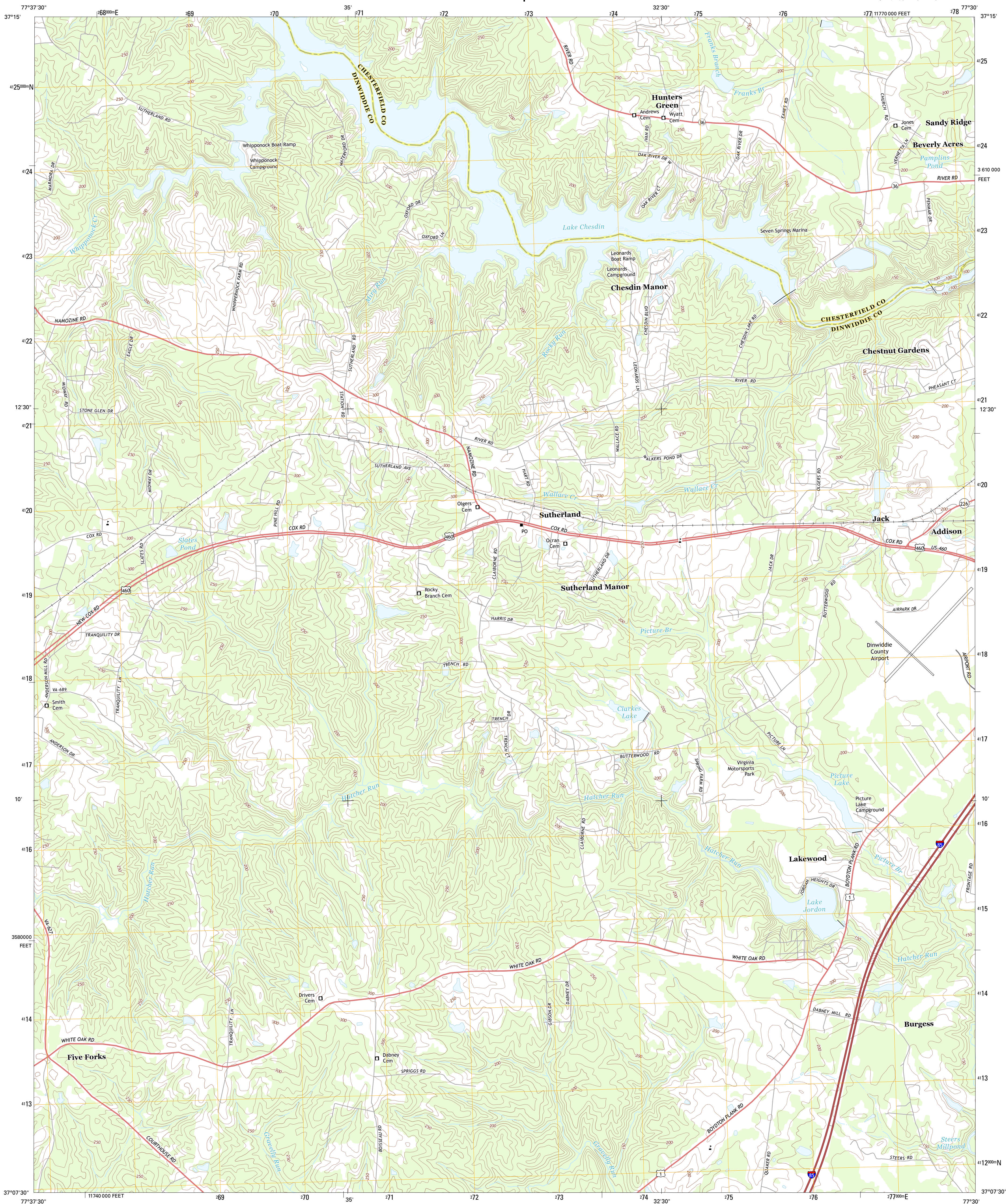




U.S. DEPARTMENT OF THE INTERIOR  
U. S. GEOLOGICAL SURVEY



SUTHERLAND QUADRANGLE  
VIRGINIA  
7.5-MINUTE SERIES



Produced by the United States Geological Survey  
North American Datum of 1983 (NAD83)  
World Geodetic System of 1984 (WGS84). Projection and  
1 000-meter grid: Universal Transverse Mercator, Zone 18S  
10 000-foot ticks: Virginia Coordinate System of 1983 (south  
zone)

Imagery.....NAIP, May 2012  
Roads.....©2006-2012, TomTom  
Names.....GNIS, 2013  
Hydrography.....National Hydrography Dataset, 2012  
Contours.....National Elevation Dataset, 2008  
Boundaries.....Census, IBWC, IBC, USGS, 1972 - 2012

UTM GRID AND 2013 MAGNETIC NORTH  
DECLINATION AT CENTER OF SHEET

U.S. National Grid  
100,000 m Square ID  
TG  
Grid Zone Designation  
18S

SCALE 1:24 000  
1 000 0 500 0 500 1000 2000  
KILOMETERS  
1 000 0 1000 2000 3000 4000 5000 6000 7000 8000 9000 10000  
METERS  
1 000 0 1000 2000 3000 4000 5000 6000 7000 8000 9000 10000  
MILES

CONTOUR INTERVAL 10 FEET  
NORTH AMERICAN VERTICAL DATUM OF 1988

This map was produced to conform with the  
National Geospatial Program US Topo Product Standard, 2011.  
A metadata file associated with this product is draft version 0.6.11



QUADRANGLE LOCATION

Winterpock	Beach	Chester
Church Road	Sutherland	Petersburg
DeWitt	Dinwiddie	Canon

ADJOINING 7.5 QUADRANGLES

ROAD CLASSIFICATION  
Expressway  
Secondary Hwy  
Ramp  
Interstate Route  
Local Connector  
Local Road  
4WD  
US Route  
State Route

SUTHERLAND, VA  
2013