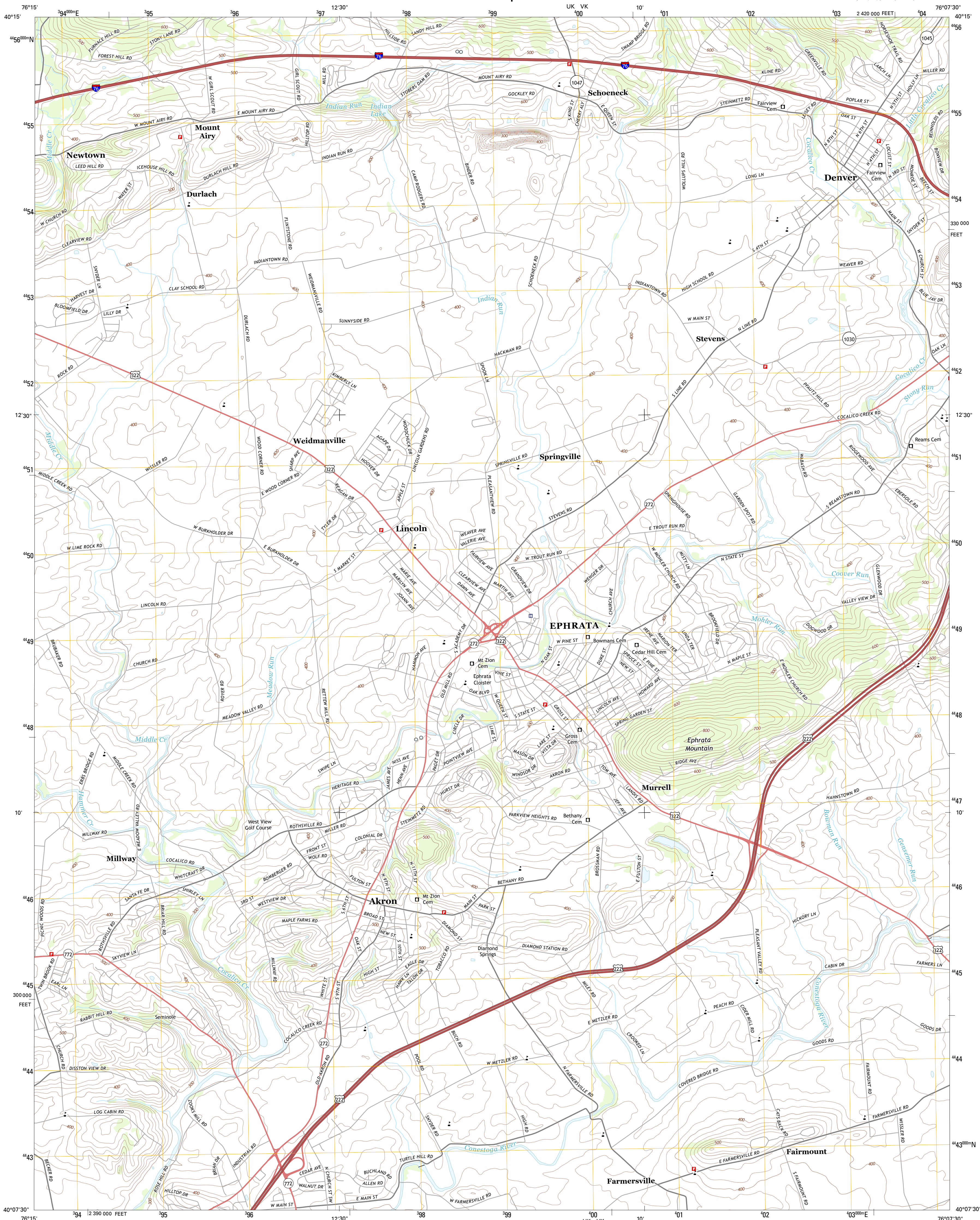




U.S. DEPARTMENT OF THE INTERIOR  
U. S. GEOLOGICAL SURVEY



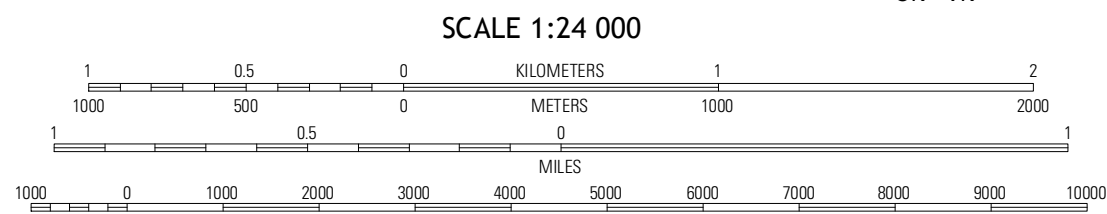
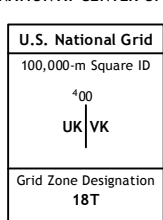
EPHRATA QUADRANGLE  
PENNSYLVANIA-LANCASTER CO.  
7.5-MINUTE SERIES



Produced by the United States Geological Survey  
North American Datum of 1983 (NAD83)  
World Geodetic System of 1984 (WGS84). Projection and  
1 000-meter grid: Universal Transverse Mercator, Zone 18T  
10 000-foot ticks: Pennsylvania Coordinate System of 1983  
(south zone)

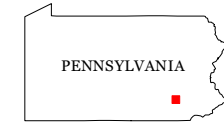
Imagery.....NAIP, July 2010  
Roads.....©2006-2012, TomTom  
Names.....GNS, 2013  
Hydrography.....National Hydrography Dataset, 2010  
Contours.....National Elevation Dataset, 2002  
Boundaries.....Census, IBWC, IBC, USGS, 1972 - 2012

UTM GRID AND 2013 MAGNETIC NORTH  
DECLINATION AT CENTER OF SHEET



CONTOUR INTERVAL 20 FEET  
NORTH AMERICAN VERTICAL DATUM OF 1988

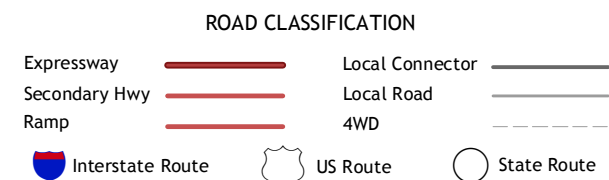
This map was produced to conform with the  
National Geospatial Program US Topo Product Standard, 2011.  
A metadata file associated with this product is draft version 0.6.11



QUADRANGLE LOCATION

Richland	Womelsdorf	Sinking Spring
Litz	Ephrata	Terre Hill
Lancaster	Leola	New Holland

ADJOINING 7.5 QUADRANGLES



EPHRATA, PA  
2013