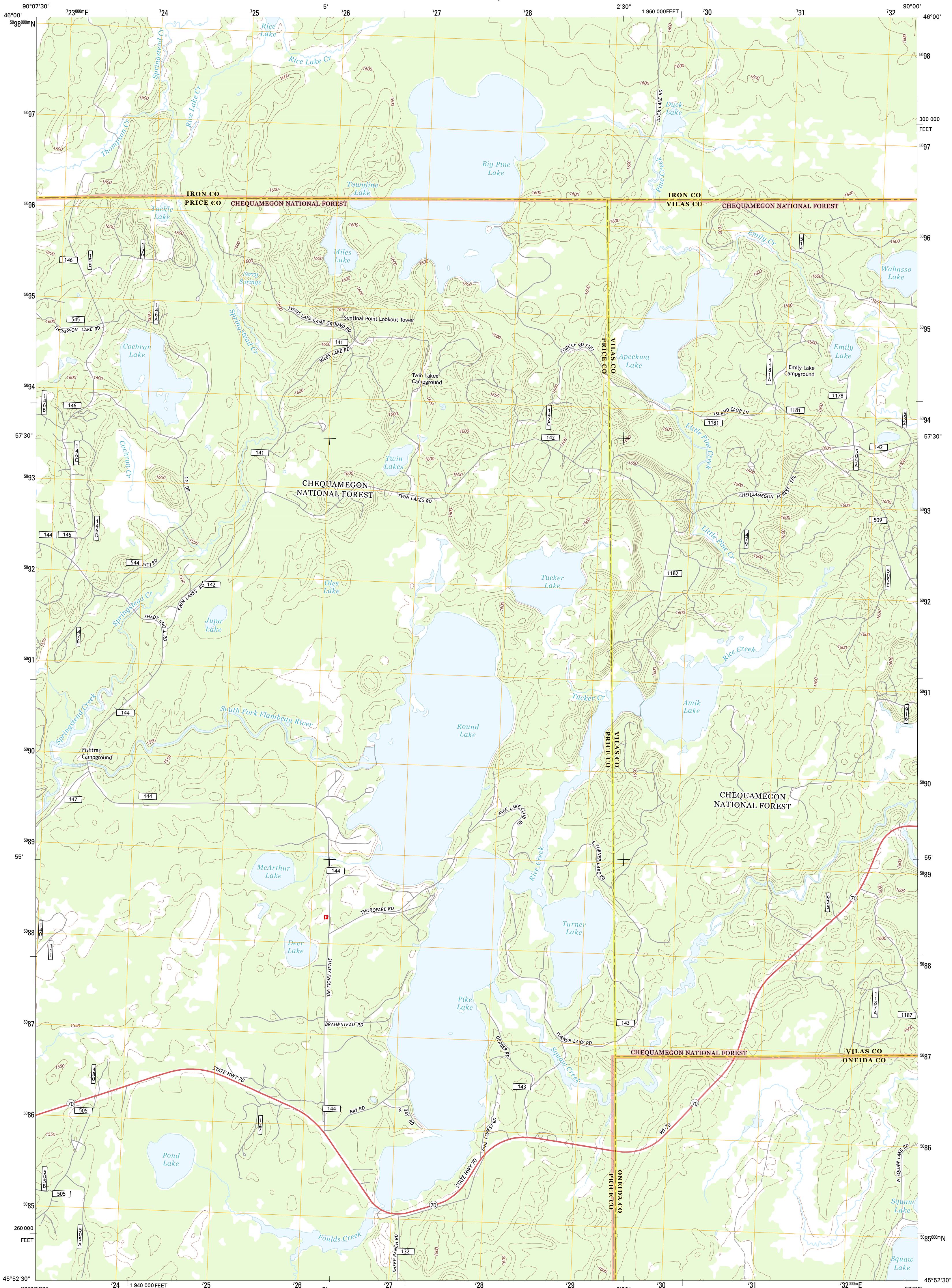




U.S. DEPARTMENT OF THE INTERIOR  
U. S. GEOLOGICAL SURVEY

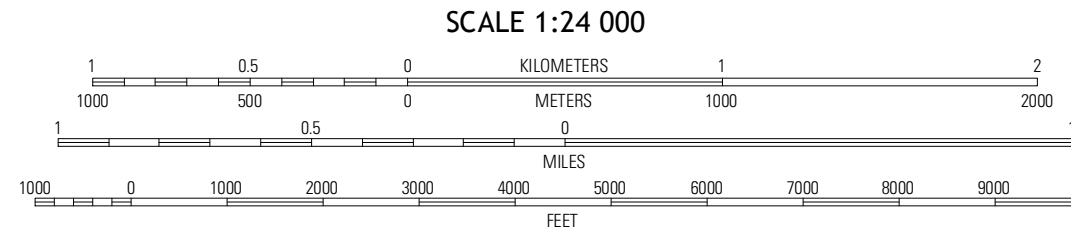
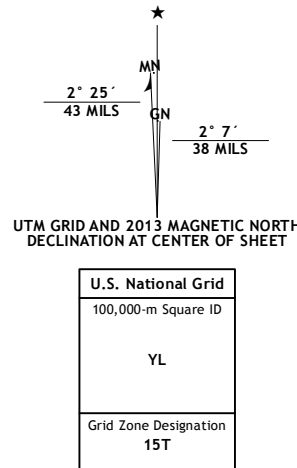


PIKE LAKE QUADRANGLE  
WISCONSIN  
7.5-MINUTE SERIES



Produced by the United States Geological Survey  
North American Datum of 1983 (NAD83)  
World Geodetic System of 1984 (WGS84). Projection and  
1 000-meter grid: Universal Transverse Mercator, Zone 15T  
10 000-foot ticks: Wisconsin Coordinate System of 1983 (north  
zone)

Imagery.....NAIP, August 2010  
Roads.....©2006-2012 TomTom  
Roads within US Forest Service Lands.....FS Topo Data  
with limited Forest Service updates, 2013  
Names.....GNIS, 2013  
Hydrography.....National Hydrography Dataset, 2010  
Contours.....National Elevation Dataset, 2002  
Boundaries.....Census, IBWC, IBC, USGS, 1972 - 2012



|                                |                 |                       |
|--------------------------------|-----------------|-----------------------|
| Turtle-<br>Flambeau<br>Flowage | Wilson<br>Lake  | Powell                |
| Pike<br>Lake NW                | Pike<br>Lake    | Lac du<br>Flambeau    |
| Pike<br>Lake SW                | Pike<br>Lake SE | Lac du<br>Flambeau SW |

Check with local Forest Service unit  
for current travel conditions and restrictions.

PIKE LAKE, WI  
2013