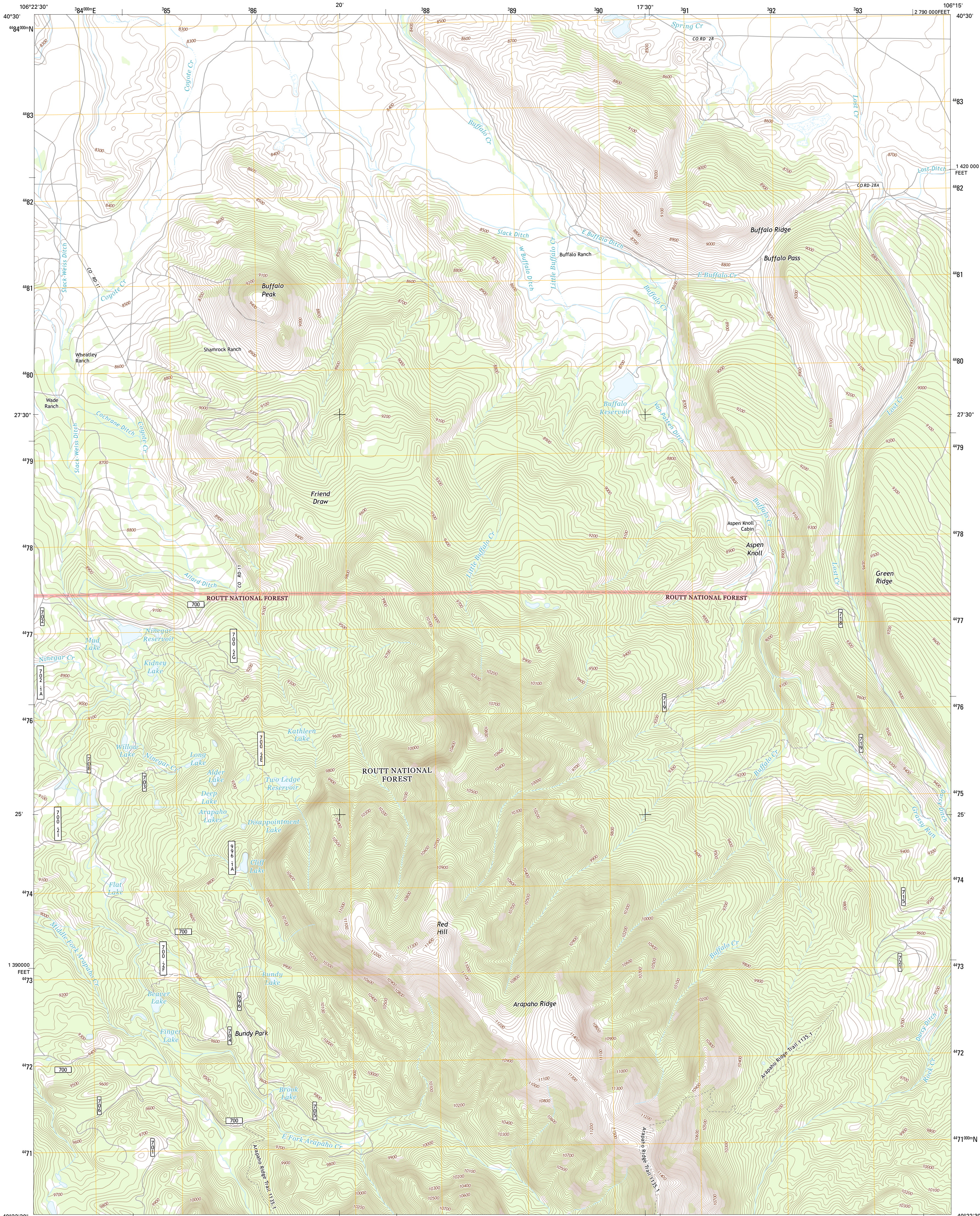




U.S. DEPARTMENT OF THE INTERIOR
U. S. GEOLOGICAL SURVEY



BUFFALO PEAK QUADRANGLE
COLORADO-JACKSON CO.
7.5-MINUTE SERIES

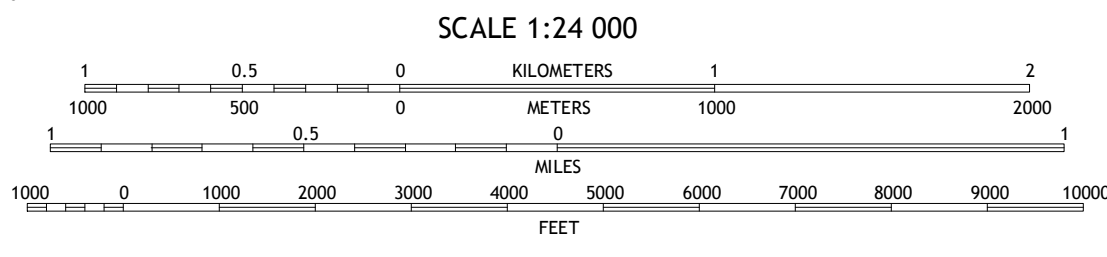


Produced by the United States Geological Survey
North American Datum of 1983 (NAD83)
World Geodetic System of 1984 (WGS84) Projection and
1 000-meter grid: Universal Transverse Mercator, Zone 13T
10 000-foot ticks: Colorado Coordinate System of 1983 (north
zone)

Imagery.....NAIP, July 2009 - August 2011
Roads.....2006-2012 TomTom
Roads within US Forest Service Lands.....FS Topo Data
with limited Forest Service updates, 2013
Names.....GNIS, 2013
Hydrography.....National Hydrography Dataset, 2011
Contours.....National Elevation Dataset, 2004
Boundaries.....Census, IBWC, IBC, USGS, 1972 - 2012
Public Land Survey System.....BLM, 2011

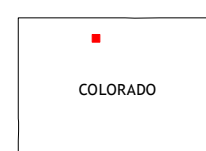
UTM GRID AND 2013 MAGNETIC NORTH
DECLINATION AT CENTER OF SHEET

U.S. National Grid
100,000-m Square ID
CE
Grid Zone Designation
13T



CONTOUR INTERVAL 20 FEET
NORTH AMERICAN VERTICAL DATUM OF 1988

This map was produced to conform with the
National Geospatial Program US Topo Product Standard, 2011.
A metadata file associated with this product is draft version 0.6.14



QUADRANGLE LOCATION		
Coalmont	MacFarlane Reservoir	Owl Ridge
Spicer Peak	Buffalo Peak	Rand
Whiteley Peak	Hyannis Peak	Parkview Mountain

ROAD CLASSIFICATION

Expressway
Secondary Hwy
Ramp
Interstate Route
FS Primary Route

Local Connector
Local Road
4WD
US Route
FS Passenger Route
State Route
Clearance Route

Check with local Forest Service unit
for current travel conditions and restrictions.

BUFFALO PEAK, CO
2013