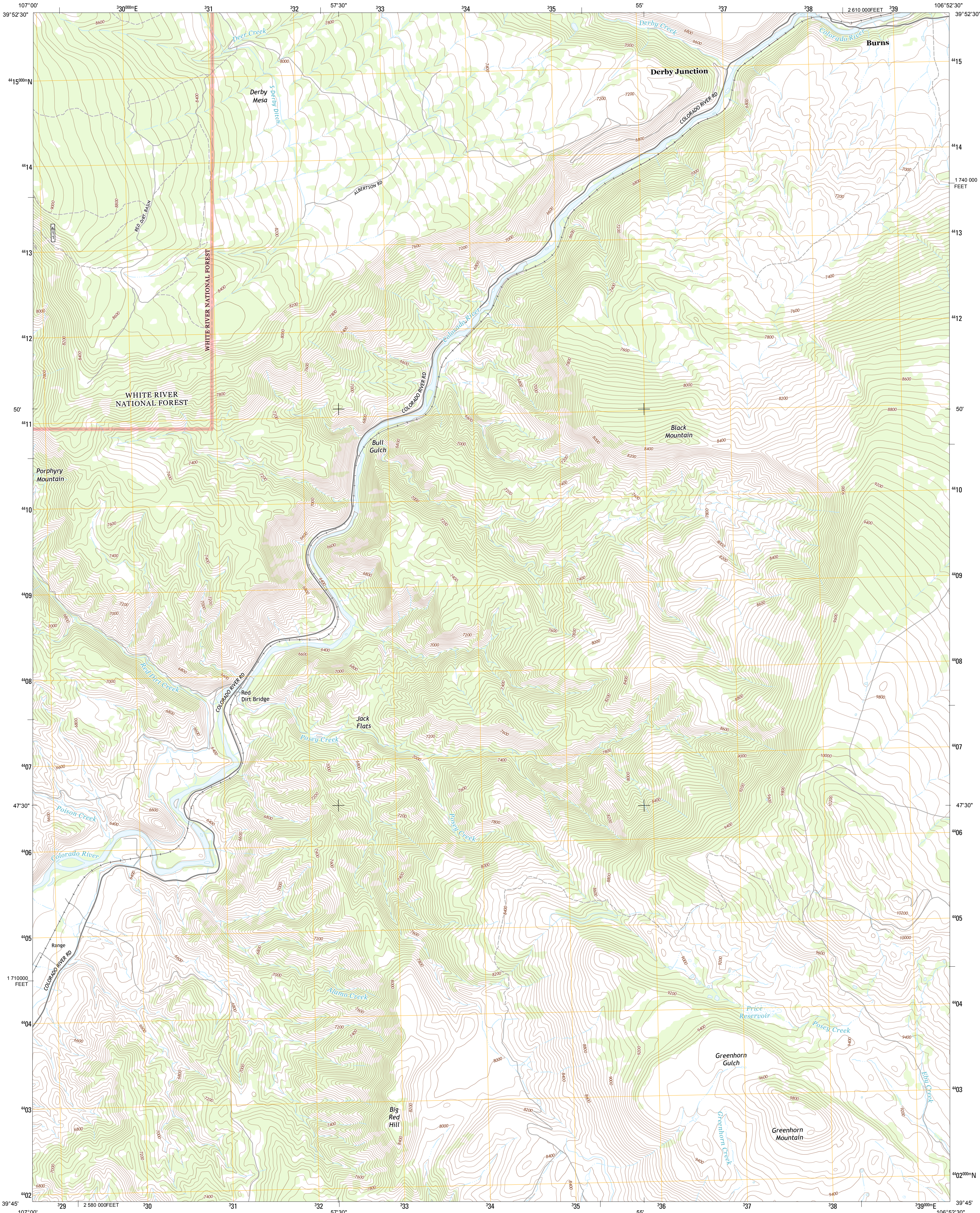




U.S. DEPARTMENT OF THE INTERIOR  
U. S. GEOLOGICAL SURVEY



BURNS SOUTH QUADRANGLE  
COLORADO-EAGLE CO.  
7.5-MINUTE SERIES



Produced by the United States Geological Survey  
North American Datum of 1983 (NAD83)  
World Geodetic System of 1984 (WGS84). Projection and  
1 000-meter grid: Universal Transverse Mercator, Zone 13S  
10 000-foot ticks: Colorado Coordinate System of 1983 (central  
zone)

Imagery.....NAIP, July 2011  
Roads.....62006-2012 TomTom  
Roads within US Forest Service Lands.....FS Topo Data  
with limited Forest Service updates, 2013  
Names.....GNIS, 2013  
Hydrography.....National Hydrography Dataset, 2011  
Contours.....National Elevation Dataset, 2004  
Boundaries.....Census, IBWC, IBC, USGS, 1972 - 2012  
Public Land Survey System.....BLM, 2011

UTM GRID AND 2013 MAGNETIC NORTH  
DECLINATION AT CENTER OF SHEET

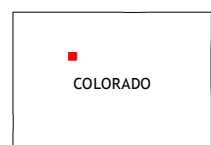
U.S. National Grid  
100,000-m Square ID  
CE  
Grid Zone Designation  
13S

SCALE 1:24 000

1 0.5 0 1 2  
1000 500 0 1000 2000  
KILOMETERS  
1 0.5 0 1000 2000  
METERS  
1 0 1000 2000 3000 4000 5000 6000 7000 8000 9000 10000  
MILES  
FEET

CONTOUR INTERVAL 40 FEET  
NORTH AMERICAN VERTICAL DATUM OF 1988

This map was produced to conform with the  
National Geospatial Program US Topo Product Standard, 2011.  
A metadata file associated with this product is draft version 0.6.14



|                    |             |             |
|--------------------|-------------|-------------|
| Dome Peak          | Burns North | Blue Hill   |
| Sugarloaf Mountain | Burns South | Castle Peak |
| Dotsero            | Gypsum      | Eagle       |

ROAD CLASSIFICATION

Expressway  
Secondary Hwy  
Ramp  
Interstate Route  
US Route  
FS Primary Route

Local Connector  
Local Road  
4WD  
US Route  
FS Passenger Route  
FS High  
Clearance Route

Check with local Forest Service unit  
for current travel conditions and restrictions.

BURNS SOUTH, CO  
2013

ADJOINING 7.5 QUADRANGLES