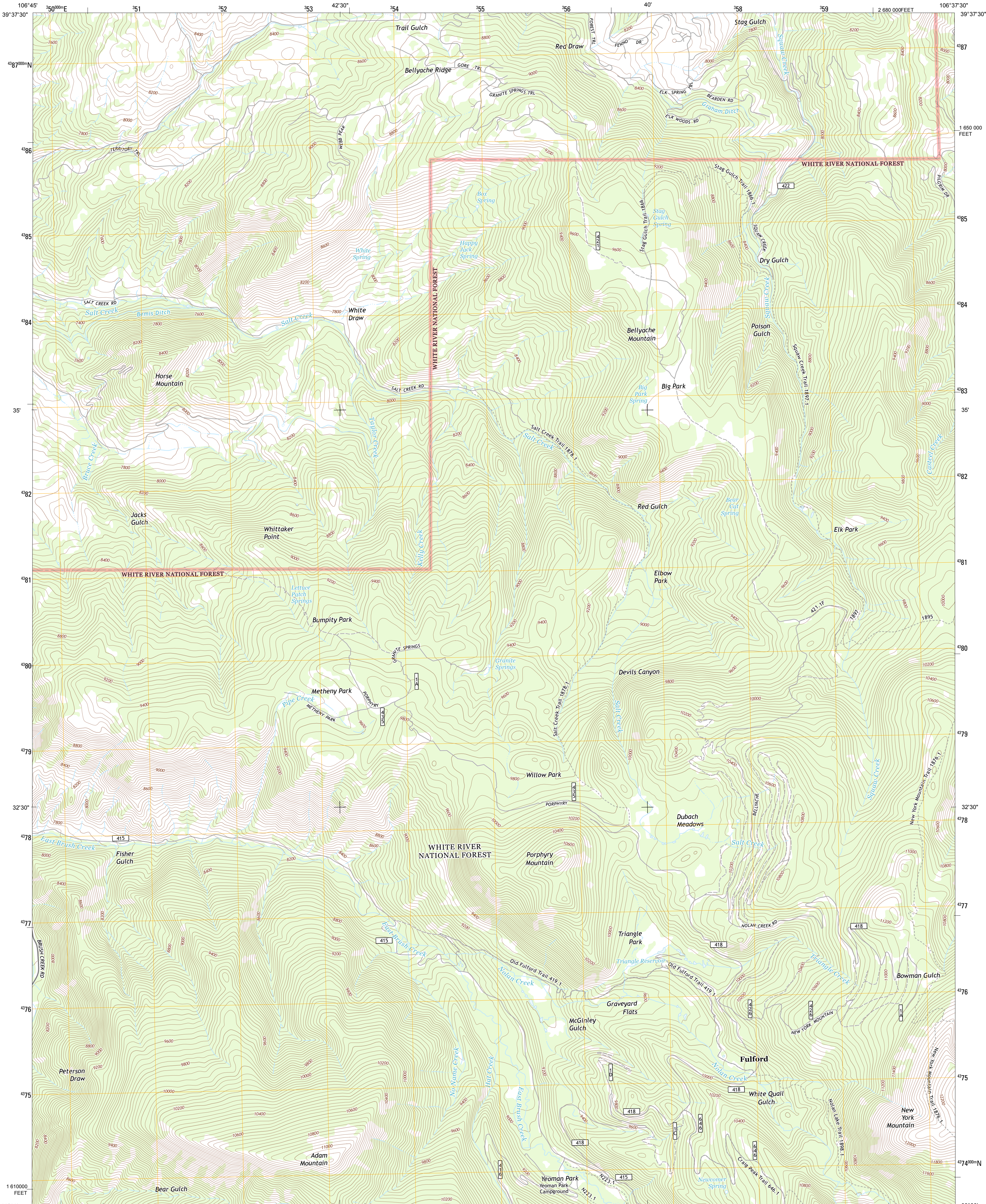




U.S. DEPARTMENT OF THE INTERIOR  
U. S. GEOLOGICAL SURVEY

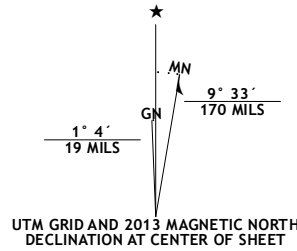


FULFORD QUADRANGLE  
COLORADO-EAGLE CO.  
7.5-MINUTE SERIES

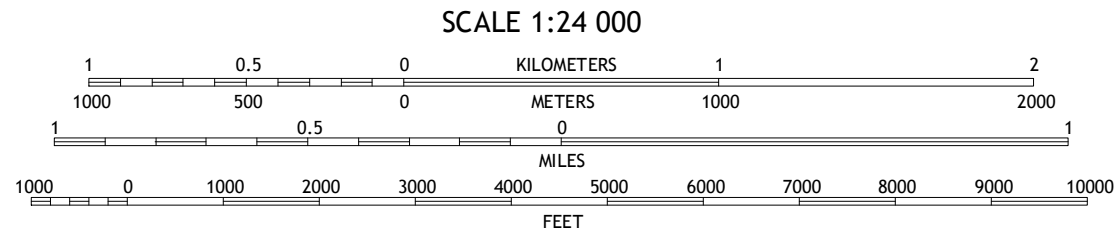


Produced by the United States Geological Survey  
North American Datum of 1983 (NAD83)  
World Geodetic System of 1984 (WGS84) Projection and  
1 000-meter grid: Universal Transverse Mercator, Zone 13S  
10 000-foot ticks: Colorado Coordinate System of 1983 (central zone)

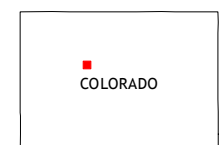
Imagery.....NAIP, August 2011 - September 2011  
Roads.....©2006-2012, TomTom  
Roads within US Forest Service Lands.....FS Topo Data  
with limited Forest Service updates, 2013  
Names.....©2011, GNS, 2013  
Hydrography.....National Hydrography Dataset, 2011  
Contours.....National Elevation Dataset, 1999  
Boundaries.....Census, IBC, USGS, 1972 - 2012  
Public Land Survey System.....BLM, 2011



U.S. National Grid
100,000-m Square ID
CD
Grid Zone Designation
13S



CONTOUR INTERVAL 40 FEET  
NORTH AMERICAN VERTICAL DATUM OF 1988  
This map was produced to conform with the  
National Geospatial Program US Topo Product Standard, 2011.  
A metadata file associated with this product is draft version 0.6.14



Eagle	Wolcott	Edwards
The Seven Hermits	Fulford	Grouse Mountain
Red Creek	Crooked Creek Pass	Mount Jackson

ADJOINING 7.5 QUADRANGLES

ROAD CLASSIFICATION			
Expressway	Secondary Hwy	Local Connector	Local Road
Ramp	Interstate Route	US Route	4WD
FS Primary Route	FS Passenger Route	FS High Clearance Route	

Check with local Forest Service unit for current travel conditions and restrictions.

FULFORD, CO  
2013