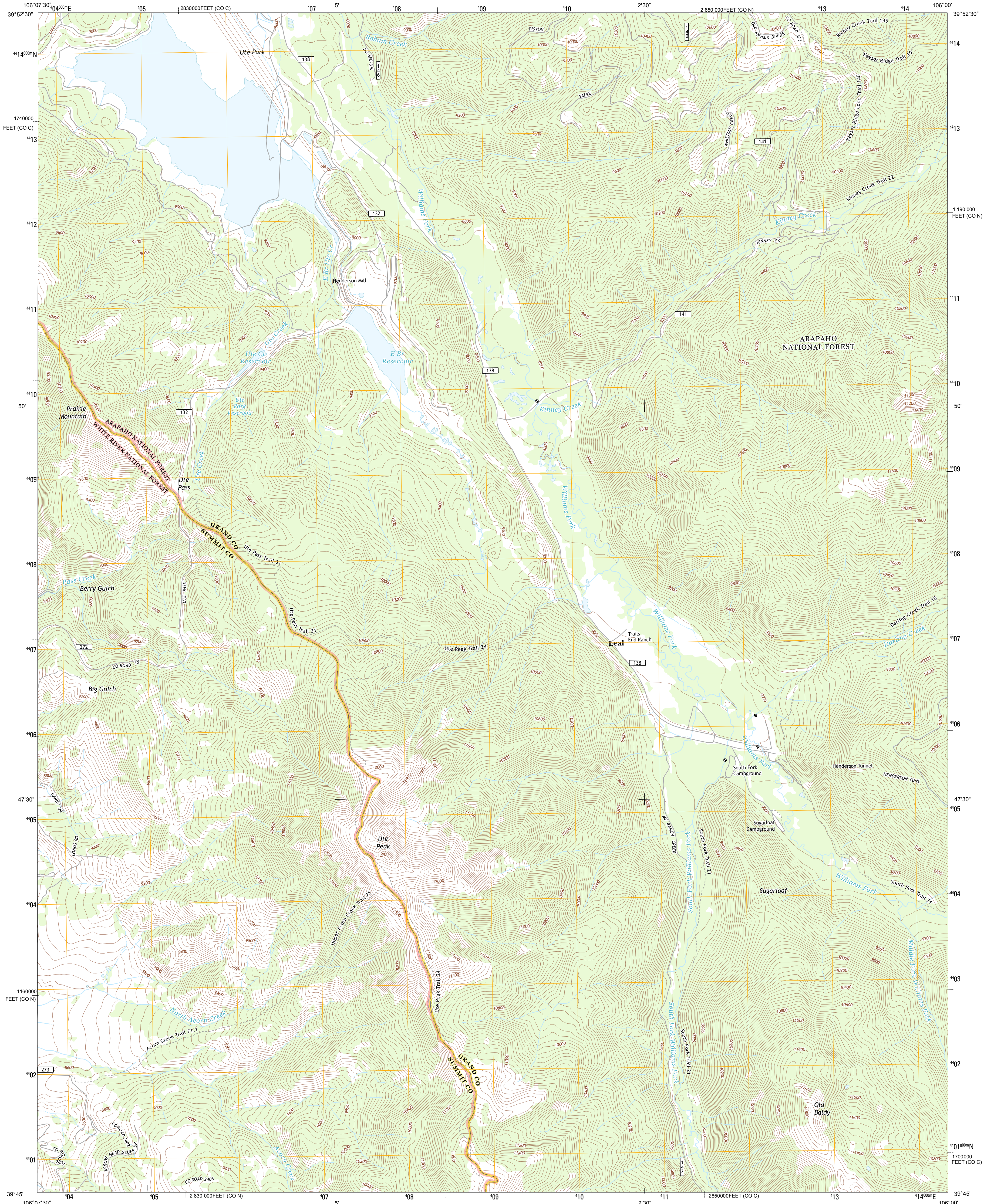




U.S. DEPARTMENT OF THE INTERIOR
U. S. GEOLOGICAL SURVEY



UTE PEAK QUADRANGLE
COLORADO
7.5-MINUTE SERIES



Produced by the United States Geological Survey
North American Datum of 1983 (NAD83)
World Geodetic System of 1984 (WGS84). Projection and
1 000-meter grid: Universal Transverse Mercator, Zone 13S
10 000-foot ticks: Colorado Coordinate System of 1983 (north
and central zones)

Imagery.....NAIP, August 2011
Roads.....2006-2012 1-ton Tom
Roads within US Forest Service Lands.....FS Topo Data
with limited Forest Service updates, 2013
Names.....GNIS, 2013
Hydrography.....National Hydrography Dataset, 2011
Contours.....National Elevation Dataset, 1999
Boundaries.....Census, IBWC, IBC, USGS, 1972 - 2012
Public Land Survey System.....BLM, 2011

UTM GRID AND 2013 MAGNETIC NORTH
DECLINATION AT CENTER OF SHEET

U.S. National Grid
100,000-m Square ID
DE
Grid Zone Designation
13S

SCALE 1:24 000

1 0.5 0 1 2
1000 500 0 1000 2000
KILOMETERS
1 0.5 0 1 2
1000 2000 3000 4000 5000 6000 7000 8000 9000 10000
METERS
1 0.5 0 1 2
1000 2000 3000 4000 5000 6000 7000 8000 9000 10000
MILES
FEET

CONTOUR INTERVAL 40 FEET
NORTH AMERICAN VERTICAL DATUM OF 1988

This map was produced to conform with the
National Geospatial Program US Topo Product Standard, 2011.
A metadata file associated with this product is draft version 0.6.14

COLORADO

QUADRANGLE LOCATION

Battle Mountain	Sylvan Reservoir	Bottle Pass
Squaw Creek	Ute Peak	Byers Peak
Willow Lakes	Dillon	Loveland Pass

ROAD CLASSIFICATION

Expressway
Secondary Hwy
Ramp
Interstate Route
US Route
FS Primary Route
Local Connector
Local Road
4WD
FS Passenger Route
FS High
Clearance Route

Check with local Forest Service unit
for current travel conditions and restrictions.

UTE PEAK, CO
2013

ADJOINING 7.5' QUADRANGLES