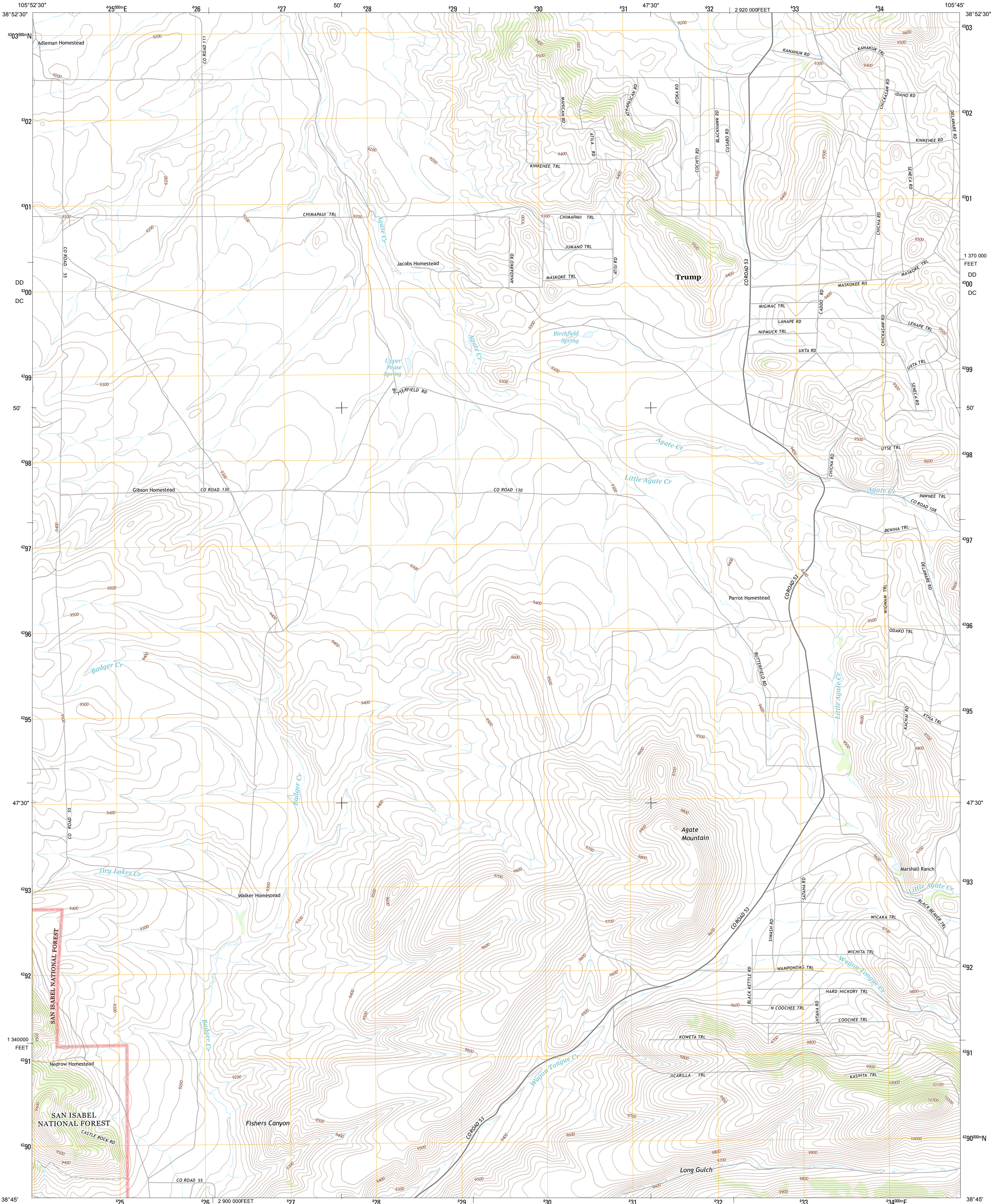




U.S. DEPARTMENT OF THE INTERIOR
U. S. GEOLOGICAL SURVEY

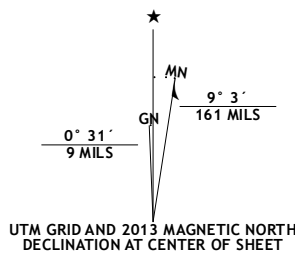


AGATE MOUNTAIN QUADRANGLE
COLORADO-PARK CO.
7.5-MINUTE SERIES

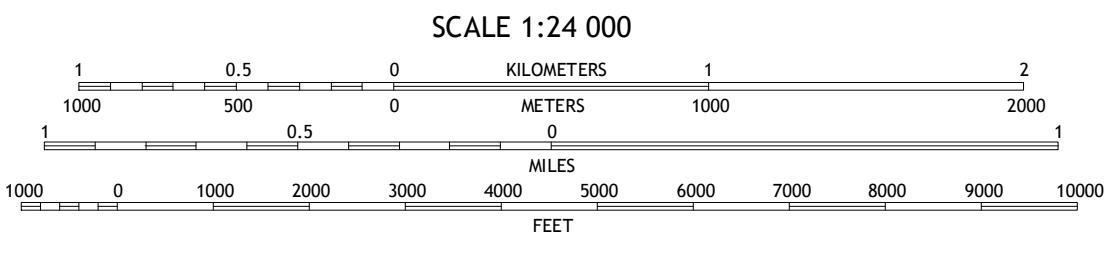


Produced by the United States Geological Survey
North American Datum of 1983 (NAD83)
World Geodetic System of 1984 (WGS84). Projection and
1 000-meter grid: Universal Transverse Mercator, Zone 13S
10 000-foot ticks: Colorado Coordinate System of 1983 (central
zone)

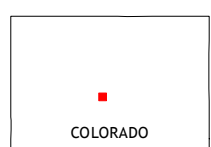
Imagery.....NAIP, September 2011
Roads.....©2006-2012 TomTom
Roads within US Forest Service Lands.....FSTopo Data
with limited Forest Service updates, 2013
Names.....GNIS, 2013
Hydrography.....National Hydrography Dataset, 2011
Contours.....National Elevation Dataset, 2002
Boundaries.....Census, IBWC, IBC, USGS, 1972 - 2012
Public Land Survey System.....BLM, 2011



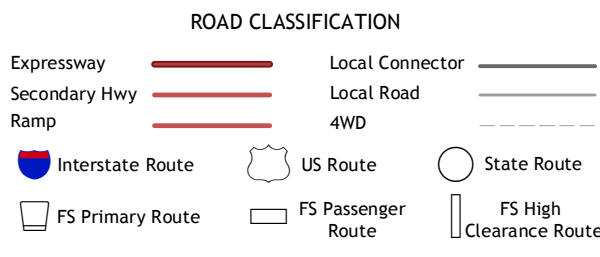
U.S. National Grid
100,000 m Square ID
DD
DC
Grid Zone Designation



CONTOUR INTERVAL 20 FEET
NORTH AMERICAN VERTICAL DATUM OF 1988
This map was produced to conform with the
National Geospatial Program US Topo Product Standard, 2011.
A metadata file associated with this product is draft version 0.6.14



Antero Reservoir	Antero Reservoir NE	Guffey NW
Castle Rock Gulch	Agate Mountain	Dicks Peak
Cameron Mountain	Gribbles Park	Black Mountain



Check with local Forest Service unit
for current travel conditions and restrictions.

AGATE MOUNTAIN, CO
2013

ADJOINING 7.5 QUADRANGLES