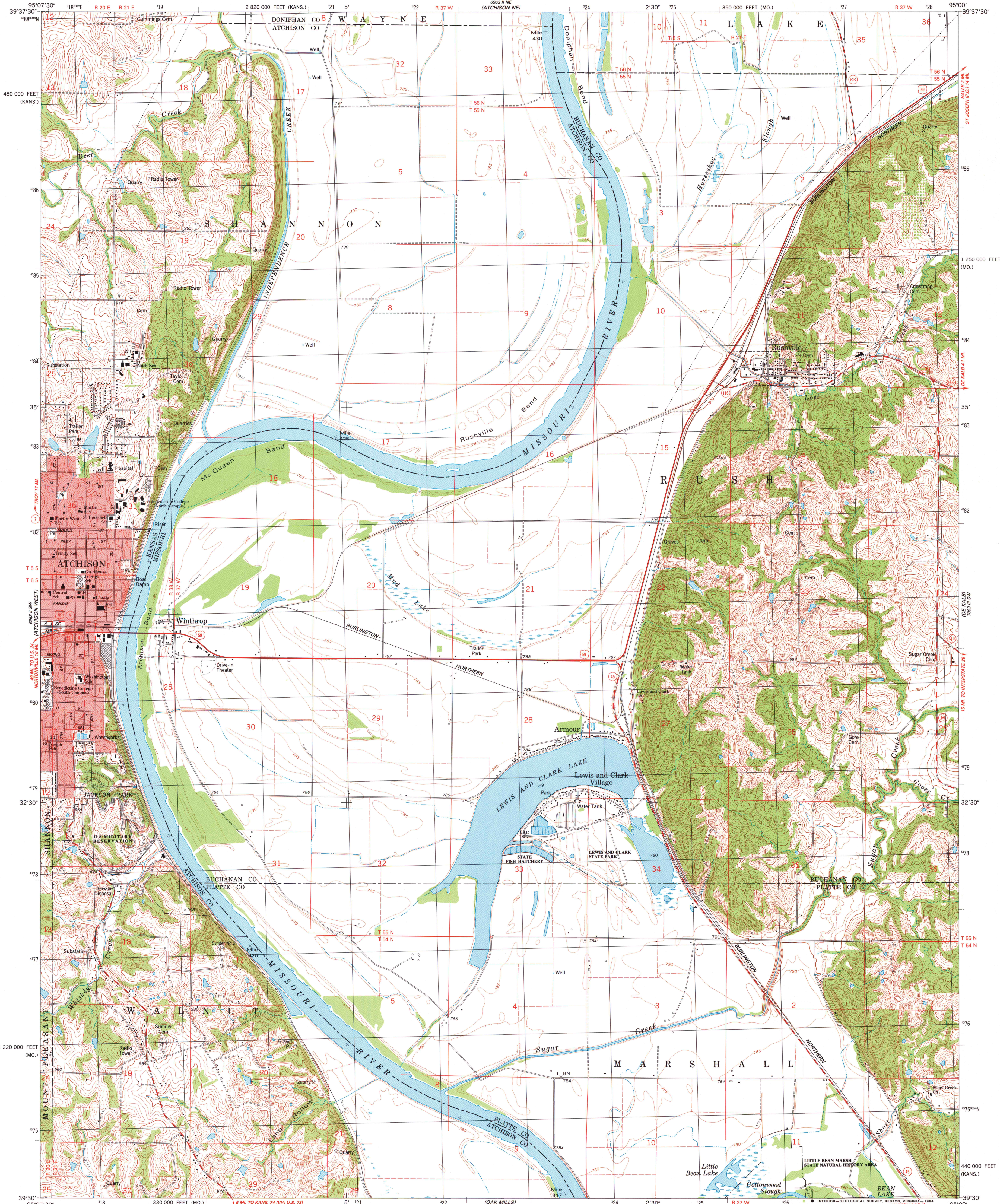
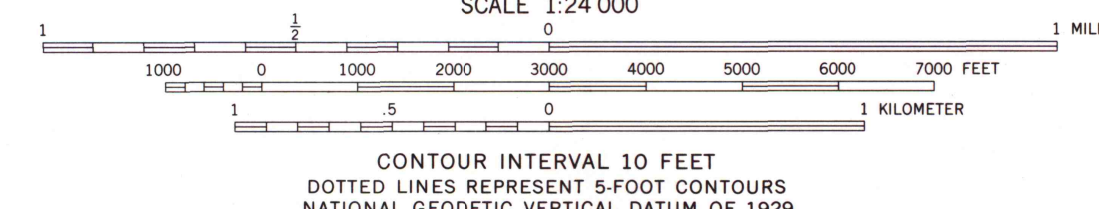
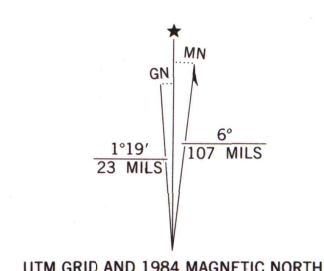


UNITED STATES  
DEPARTMENT OF THE INTERIOR  
GEOLOGICAL SURVEY

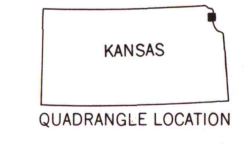
ATCHISON EAST QUADRANGLE  
KANSAS-MISSOURI  
7.5 MINUTE SERIES (TOPOGRAPHIC)  
SE/4 ATCHISON 15' QUADRANGLE



Mapped, edited, and published by the Geological Survey  
Control by USGS and NOS/NOAA  
Topography by photogrammetric methods from aerial photographs  
taken 1982. Field checked 1983. Map edited 1984  
Supersedes map dated 1978  
Projection: Missouri coordinate system, west zone  
(transverse Mercator)  
10,000-foot grid ticks based on Missouri coordinate  
system, west zone and Kansas coordinate system, north zone  
1000-meter Universal Transverse Mercator grid, zone 15  
1927 North American Datum  
To place on the predicted North American Datum 1983,  
move the projection lines 4 meters north and  
21 meters east as shown by dashed corner ticks  
There may be private inholdings within the boundaries of  
the National or State reservations shown on this map  
Red tint indicates areas in which only landmark buildings are shown  
Fine red dashed lines indicate selected fence and field lines where  
generally visible on aerial photographs. This information is unchecked



THIS MAP COMPLIES WITH NATIONAL MAP ACCURACY STANDARDS  
FOR SALE BY U. S. GEOLOGICAL SURVEY, DENVER, COLORADO 80225, OR RESTON, VIRGINIA 22092  
KANSAS GEOLOGICAL SURVEY, LAWRENCE, KANSAS 66044  
AND DIVISION OF GEOLOGY AND LAND SURVEY  
MISSOURI DEPARTMENT OF NATURAL RESOURCES, ROLLA, MISSOURI 65401  
A FOLDER DESCRIBING TOPOGRAPHIC MAPS AND SYMBOLS IS AVAILABLE ON REQUEST



ROAD CLASSIFICATION  
Primary highway, hard surface  
Secondary highway, hard surface  
Light-duty road, hard or improved surface  
Unimproved road  
Interstate Route  
U. S. Route  
State Route

ATCHISON EAST, KANS.-MO.  
SE/4 ATCHISON 15' QUADRANGLE  
39095-E1-TF-024  
1984  
DMA 6963 II SE-SERIES V878

U.S. Region  
Depository Co.  
DO NOT DISC.

A.H. ROBINSON  
MAP LIBRARY  
FEB 27 1985  
University of Wisconsin  
Madison