

(Leavenworth)  
and vicinity

DEPARTMENT OF THE INTERIOR  
U. S. GEOLOGICAL SURVEY

R.22 E.

55'

(Leavenworth)

R.23 E.

Advance sheet  
Subject to correction

KANSAS-MISSOURI  
BONNER SPRINGS QUADRANGLE  
(WEST HALF)

34°45'  
89°15'

T.9 S.

T.10 S.

Defer Sch.  
874

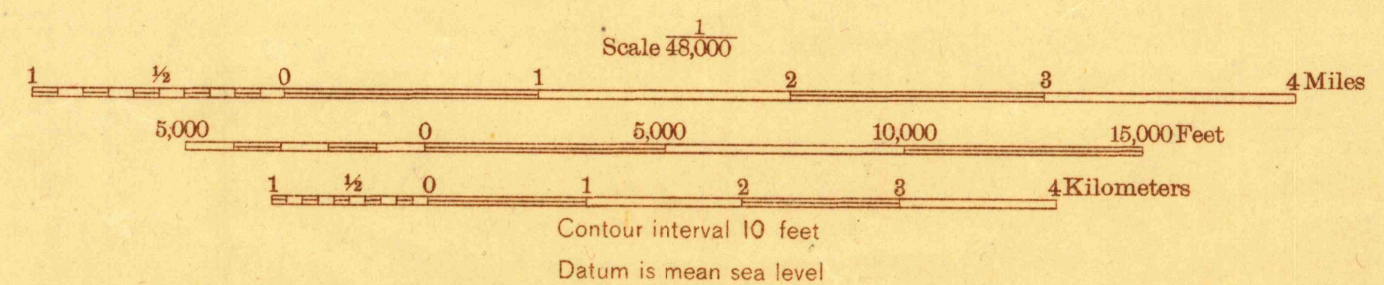
T.12 S.

(Lawrence)  
175000



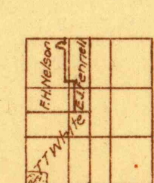
Glenn S. Smith, Division Engineer  
Topography by E.J. Fennell,  
T.T. White and F.H. Nelson  
Control by U. S. Geological Survey,  
U. S. Coast and Geodetic Survey, and  
Missouri River Commission  
Surveyed in 1934

APPROXIMATE MEAN  
DECLINATION 1924



THIS AREA IS SHOWN ON THE MAP OF EDWARDSVILLE  
QUADRANGLE, SURVEYED IN 1934, SCALE 1:24 000

THE KANSAS PART OF THIS AREA IS SHOWN ON THE MAP OF  
WOLCOTT QUADRANGLE, SURVEYED IN 1934, SCALE 1:24 000  
THE MISSOURI PART IS SHOWN ON THE MAP OF KANSAS CITY  
QUADRANGLE, SURVEYED IN 1885 AND 1887, SCALE 1:125 000



BONNER SPRINGS, KANS.-MO.  
(WEST HALF)

RETURN TO:  
USGS AND HISTORICAL MAP ARCHIVES