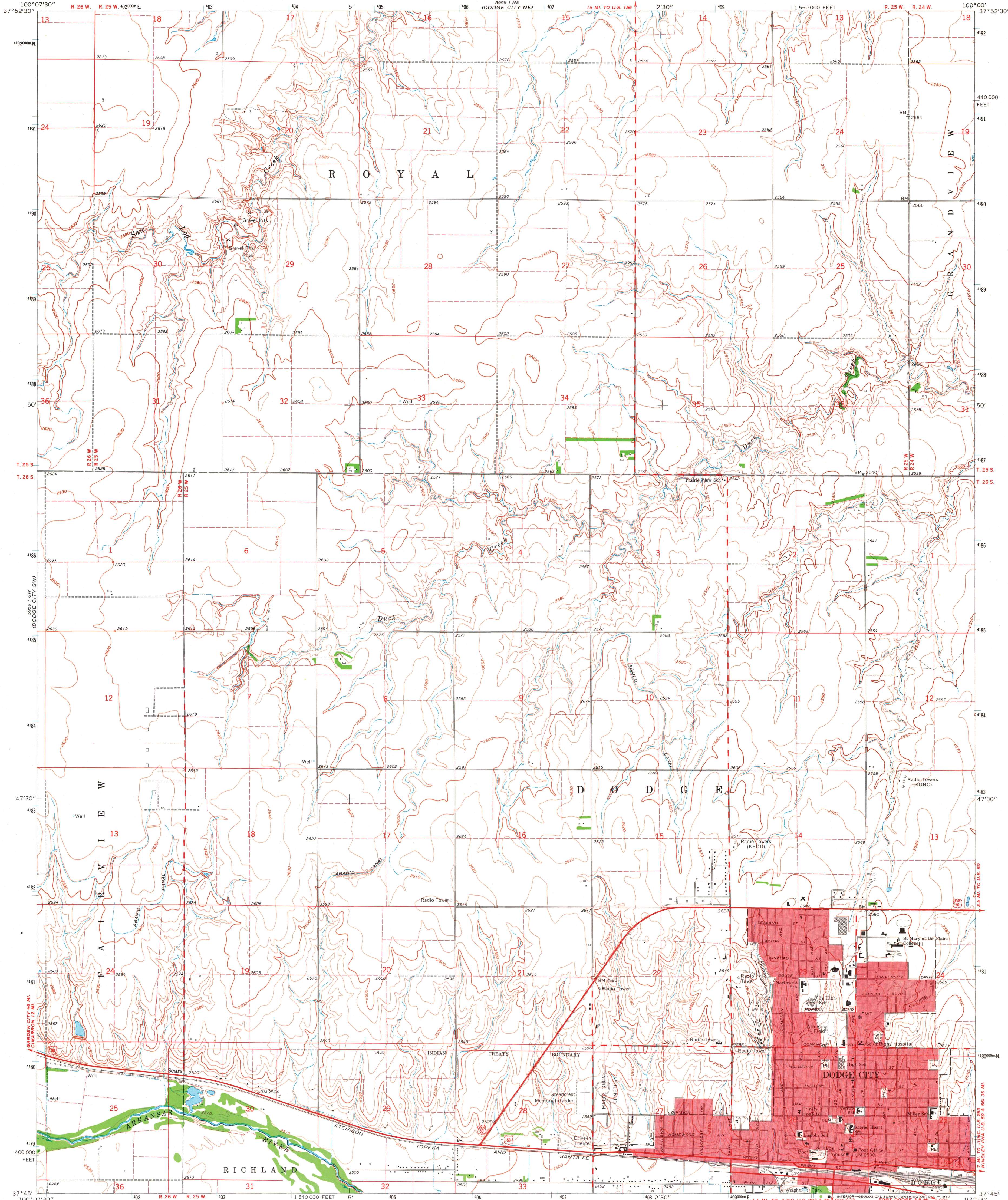


UNITED STATES
DEPARTMENT OF THE INTERIOR
GEOLOGICAL SURVEY

DODGE CITY QUADRANGLE
KANSAS—FORD CO.
7.5 MINUTE SERIES (TOPOGRAPHIC)



Mapped, edited, and published by the Geological Survey

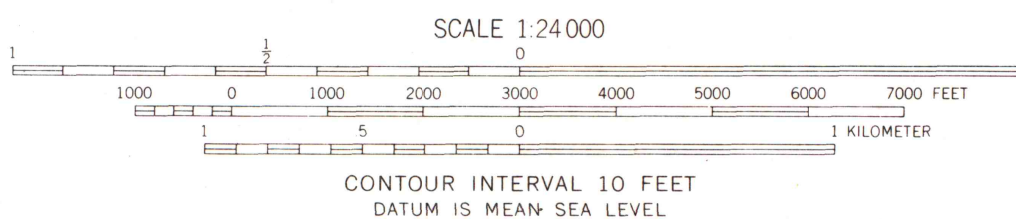
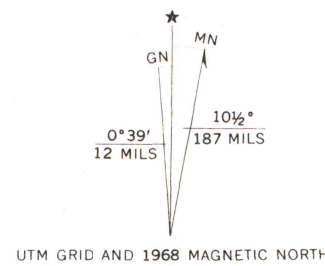
Control by USGS and USC&GS

Topography by photogrammetric methods from aerial photographs taken 1965. Field checked 1968

Polyconic projection. 1927 North American datum
10,000-foot grid based on Kansas coordinate system, south zone
1000-meter Universal Transverse Mercator grid ticks,
zone 14, shown in blue

Red tint indicates areas in which only landmark buildings are shown

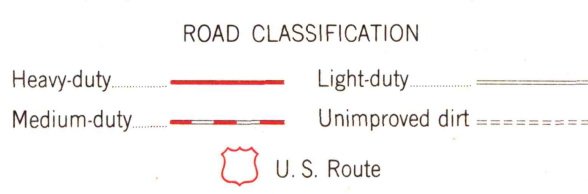
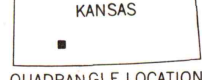
Fine red dashed lines indicate selected fence and field lines where generally visible on aerial photographs. This information is unchecked



MAP AND AIR PHOTO LIBRARY

MAR 10 1970

University of Wisconsin



DODGE CITY, KANS.

N3745—W10000/7.5

1968

AMS 5959 I SE—SERIES V878