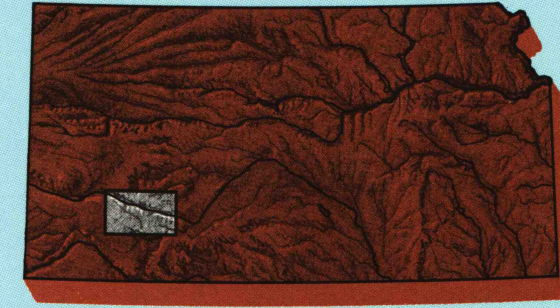
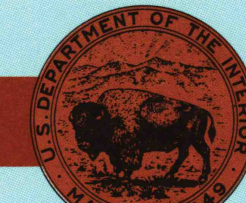


**1:100 000-scale *metric*
topographic map**



**30 X 60 MINUTE QUADRANGLE
SHOWING**

- Contours and elevations in meters
- Highways, roads and other manmade structures
- Water features
- Woodland areas
- Geographic names



GEOLOGICAL SURVEY

1985

Produced by the United States Geological Survey

Compiled from USGS 1:24 000-scale topographic maps dated 1959-1984. Planimetry revised from aerial photographs taken 1981 and other source data. Revised information not field checked. Map edited 1985.

Projection and 10 000-meter grid, zone 14,
Universal Transverse Mercator
25 000-foot grid ticks based on Kansas coordinate
system, south zone
1927 North American Datum

To place on the predicted North American Datum 1983, move the projection lines 2 meters north and 36 meters east

There may be private inholdings within the boundaries of the National or State reservations shown on this map

CONTOUR INTERVAL 5 METERS
NATIONAL GEODETIC VERTICAL DATUM OF 1929
ELEVATIONS SHOWN TO THE NEAREST METER

THIS MAP COMPLIES WITH NATIONAL MAP ACCURACY STANDARDS:

Meters	Feet
1	3.2808
2	6.5617
3	9.8425
4	13.1234
5	16.4042
6	19.6850
7	22.9659
8	26.2467
9	29.5276
10	32.8084

DECLINATION DIAGRAM

GN
MN
GC
10 MILES 169 MILES

UTM grid convergence
(GN and MN magnetic
declination (MN)
at center of map
Diagram is approximate

1	2	3
4	5	6
7	8	9

To convert meters to feet multiply by 3.2808

To convert feet to meters multiply by 0.3048

1 Leoti
2 Scott City
3 Larned
4 Chaves
5 Kinsley
6 Hugoton
7 Liberal
8 Protection

FOR SALE BY U.S. GEOLOGICAL SURVEY
DENVER, COLORADO 80225, OR RESTON, VIRGINIA 22092
USGS NM1 HISTORICAL MAP

AUG 16 1988

REC'D FILE COPY

Topographic Map Symbols

- | | |
|-------------------------------------------------------------|--|
| Primary highway, hard surface | |
| Secondary highway, hard surface | |
| Light duty road, principal street, hard or improved surface | |
| Other road or street; trail | |
| Route marker, Interstate, U.S. State | |
| Railroad: standard gage; narrow gage | |
| Bridge: overpasses; underpass | |
| Tunnel: road; railroad | |
| Rail cut, open area; locally, elevation | |
| Airport; landing field; landing strip | |
| National boundary | |
| State boundary | |
| County boundary | |
| National or State reservation boundary | |
| Land grant boundary | |
| U.S. public lands range; range, township; section | |
| Range, township; section line; protracted | |
| Power transmission line; pipeline | |
| Dam; dam with lock | |
| Cemetery; building | |
| Mineral; water well; spring | |
| Mound; site of cave; mine, quarry; gravel pit | |
| Powerhouse; pier; U.S. location monument | |
| Ruins; cliff dwelling | |
| Distorted surface: strip mine, lava, sand | |
| Contours: index; intermediate; supplementary | |
| Arithmetic contours: index; intermediate | |
| Stream, lake; perennial; intermittent | |
| Rapids, large sand; falls, lake and small | |
| Area to be submerged; marsh, swamp | |
| Land subject to controlled inundation; woodland | |
| Sandy meadow | |
| Orchard; vineyard | |

A pamphlet describing topographic maps is available on request.