

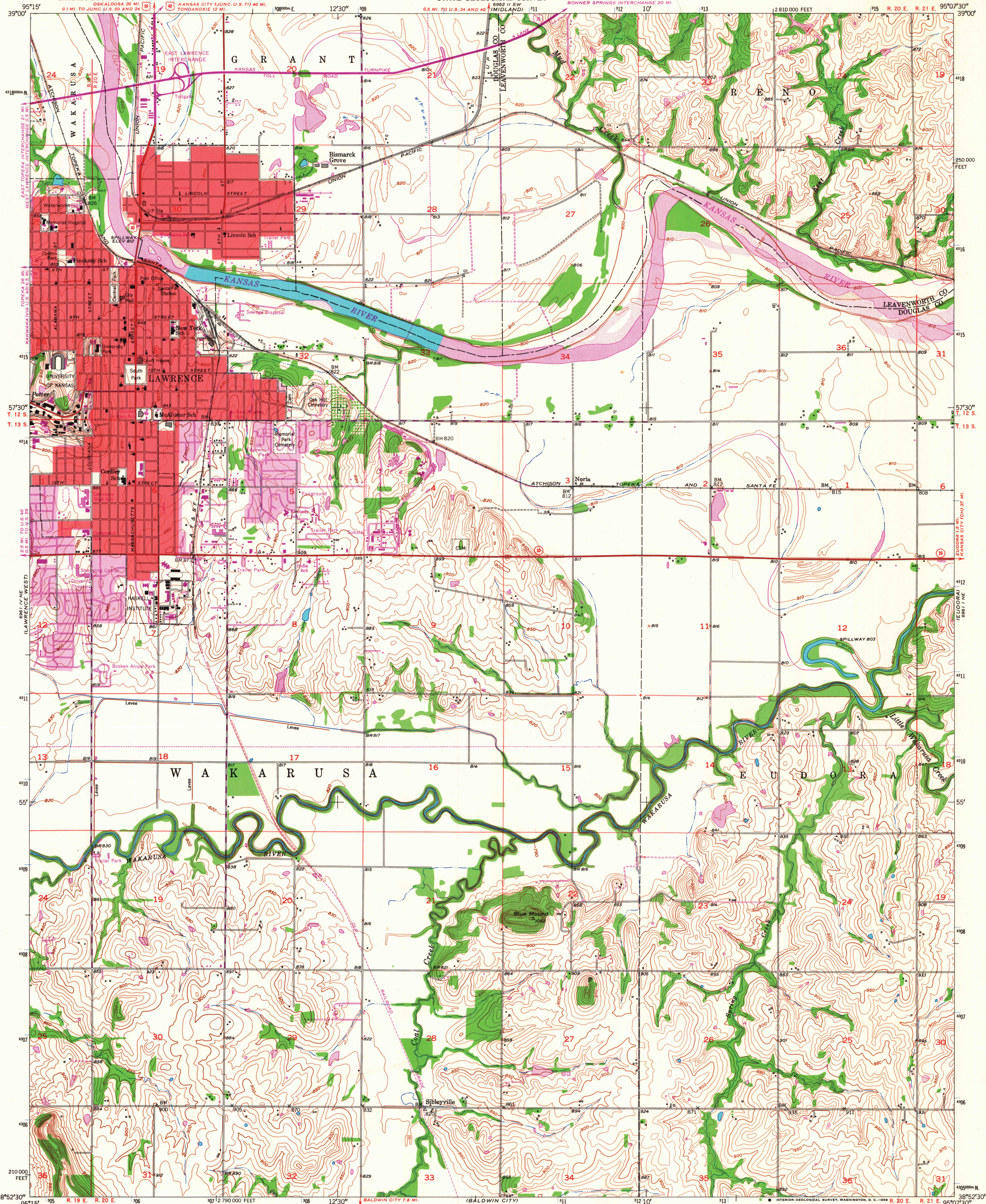
6961 11 SE  
(WILLIAMS TOWN)

UNITED STATES  
DEPARTMENT OF THE INTERIOR  
GEOLOGICAL SURVEY

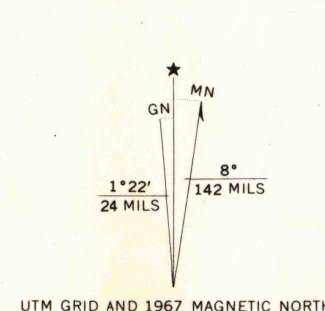
STATE OF KANSAS  
UNIVERSITY OF KANSAS  
STATE GEOLOGICAL SURVEY

LAWRENCE EAST QUADRANGLE  
KANSAS  
7.5 MINUTE SERIES (TOPOGRAPHIC)

6961 11 E  
(TONGANOXIE)



Mapped, edited, and published by the Geological Survey  
Control by USGS and USC&GS  
Topography by multiplex methods from aerial photographs  
taken 1948, and by plane-table surveys 1950  
Field check 1950  
Polyconic projection. 1927 North American datum  
10,000-foot grid based on Kansas coordinate system,  
north zone  
1000-meter Universal Transverse Mercator grid ticks,  
zone 15, shown in blue  
Red tint indicates areas in which only  
landmark buildings are shown  
Revisions shown in purple compiled from aerial photographs  
taken 1967. This information not field checked  
Purple tint indicates extension of urban areas



CONTOUR INTERVAL 10 FEET  
DATUM IS MEAN SEA LEVEL  
THIS MAP COMPLIES WITH NATIONAL MAP ACCURACY STANDARDS  
FOR SALE BY U.S. GEOLOGICAL SURVEY, DENVER, COLORADO 80225, OR WASHINGTON, D. C. 20242  
AND BY THE STATE GEOLOGICAL SURVEY, LAWRENCE, KANSAS 66044  
A FOLDER DESCRIBING TOPOGRAPHIC MAPS AND SYMBOLS IS AVAILABLE ON REQUEST

ROAD CLASSIFICATION  
Heavy-duty ——— Light-duty ———  
Medium-duty ——— Unimproved dirt ———  
Interstate Route U.S. Route State Route  
LAWRENCE EAST, KANS.  
N3852.5-W9507.5/7.5  
1950  
PHOTOREVISED 1967  
AMS 6961 1 NW-SERIES V878

6961 12 E  
(EDGEMONT)