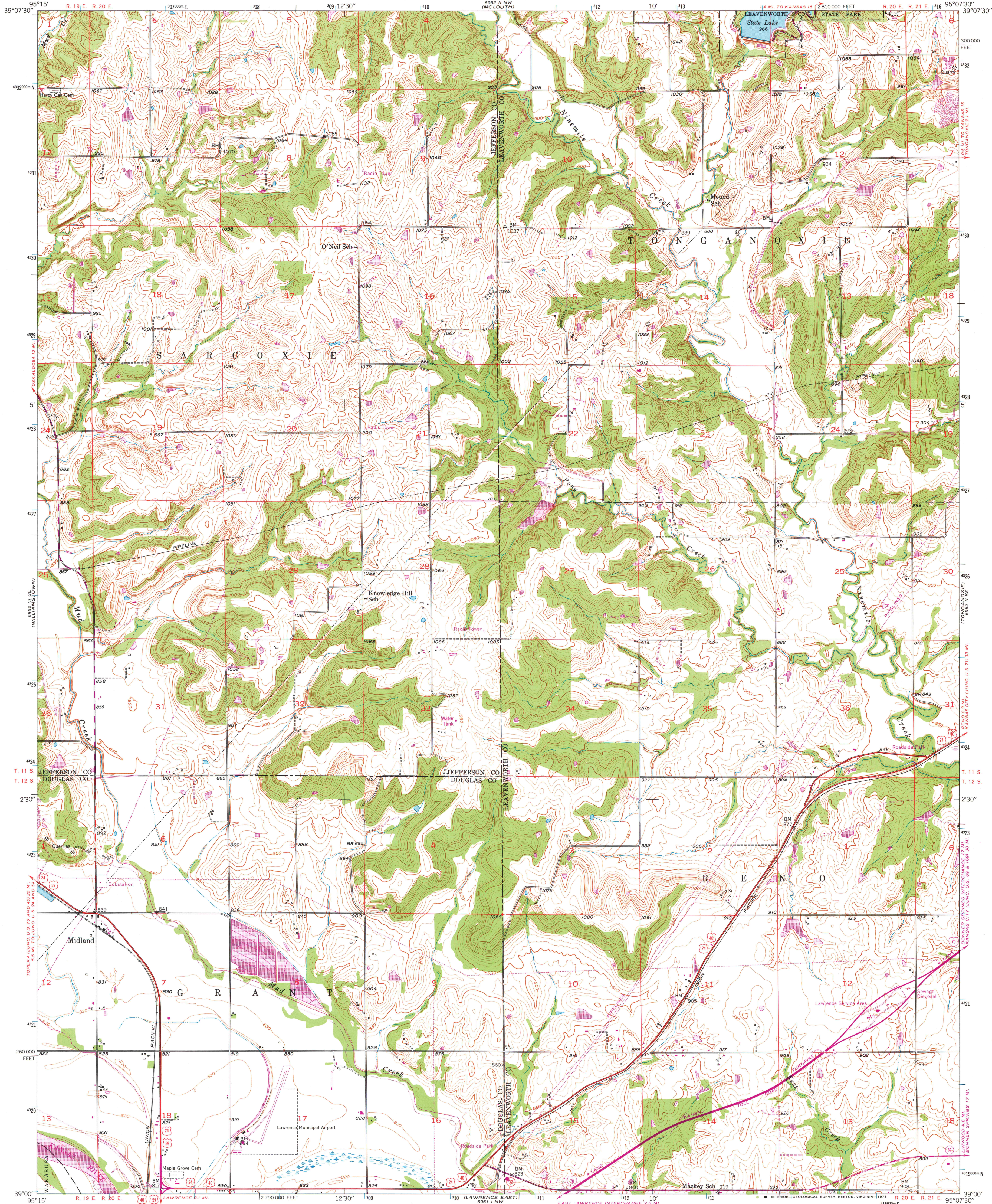
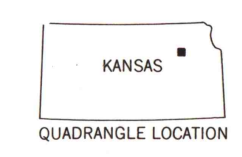
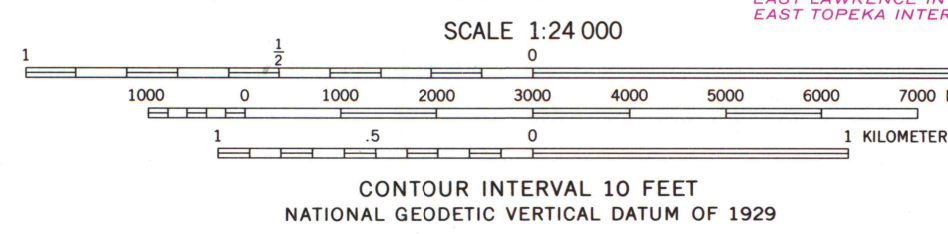
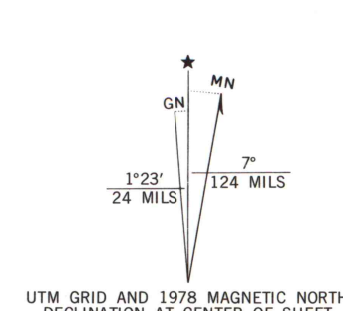


UNITED STATES
DEPARTMENT OF THE INTERIOR
GEOLOGICAL SURVEY

MIDLAND QUADRANGLE
KANSAS
7.5 MINUTE SERIES (TOPOGRAPHIC)



Mapped, edited, and published by the Geological Survey
Control by USGS and USC&GS
Topography from aerial photographs by multiplex methods
Aerial photographs taken 1948. Field check 1950
Polyconic projection. 1927 North American datum
10,000-foot grid based on Kansas coordinate system,
north zone
1000-meter Universal Transverse Mercator grid ticks,
zone 15, shown in blue
Revisions shown in purple compiled in cooperation with
State of Kansas agencies from aerial photographs taken
1967 and 1977. Map edited 1978
This information not field checked



ROAD CLASSIFICATION
Heavy-duty ——— Light-duty ———
Medium-duty ——— Unimproved dirt ———
Interstate Route ——— U.S. Route ——— State Route ———
MAP AND AIR PHOTO
LIBRARY

NOV 27 1978
MIDLAND, KANS.
N3900-W9507.5/7.5
1950
PHOTOREVISED 1967 AND 1978
AMS 6962 11 SW-SERIES V878

THIS MAP COMPLIES WITH NATIONAL MAP ACCURACY STANDARDS
FOR SALE BY U.S. GEOLOGICAL SURVEY, DENVER, COLORADO 80225, OR RESTON, VIRGINIA 22092
AND STATE GEOLOGICAL SURVEY, LAWRENCE, KANSAS 66044
A FOLDER DESCRIBING TOPOGRAPHIC MAPS AND SYMBOLS IS AVAILABLE ON REQUEST