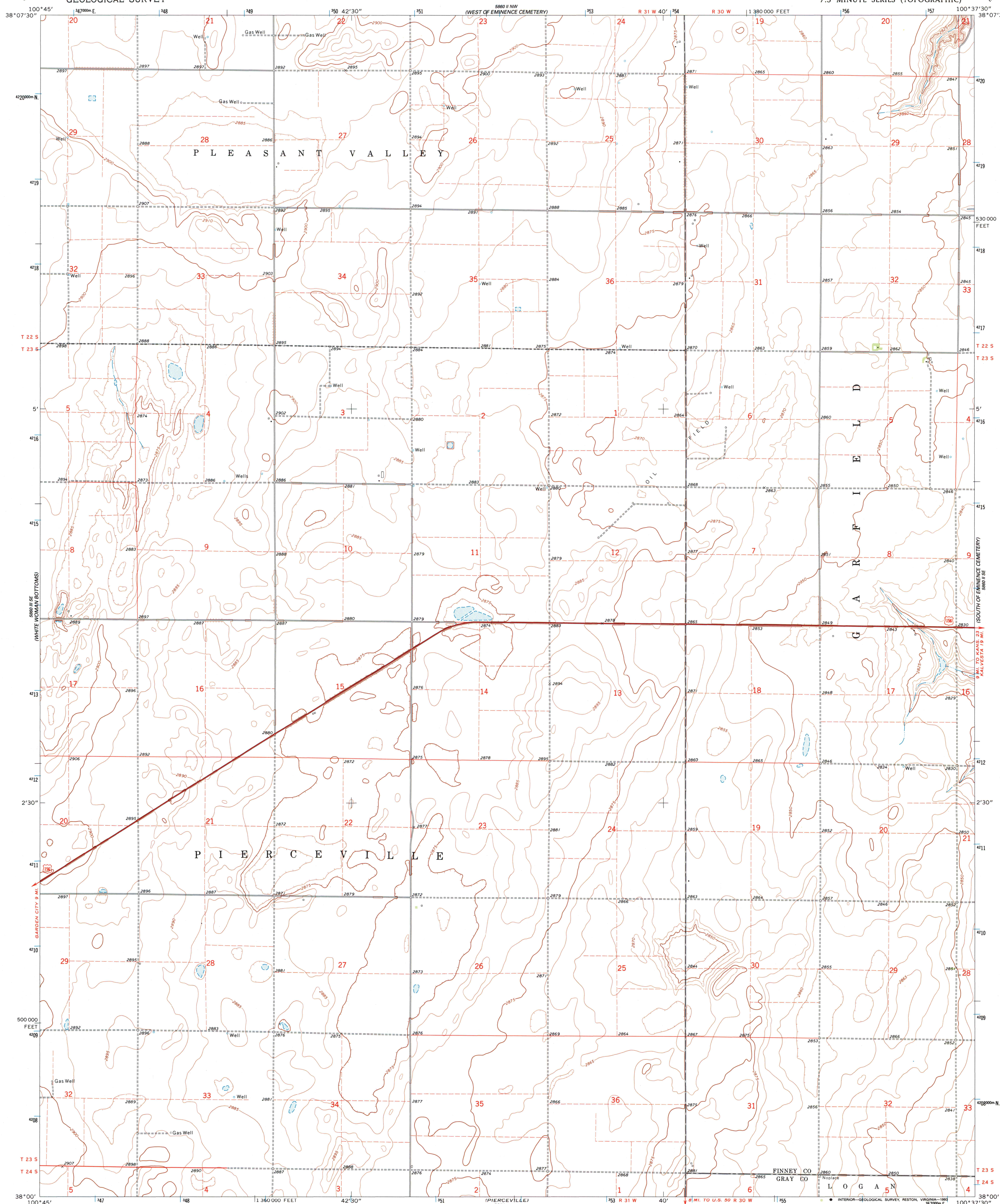


5880 III NE  
(TENNIS NE)

5880 III NE  
(EMINENCE CEMETERY)

UNITED STATES  
DEPARTMENT OF THE INTERIOR  
GEOLOGICAL SURVEY

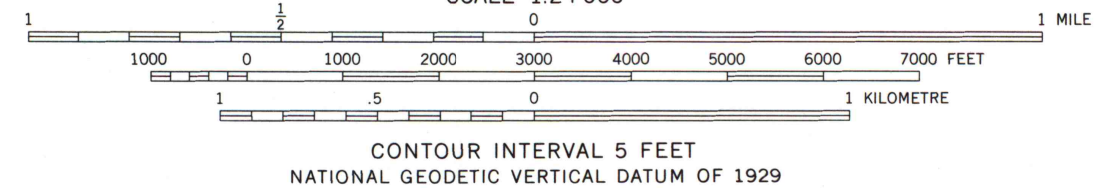
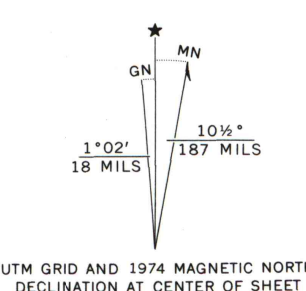
NORTH OF PIERCEVILLE QUADRANGLE  
KANSAS  
7.5 MINUTE SERIES (TOPOGRAPHIC)



(GARDEN CITY EAST)

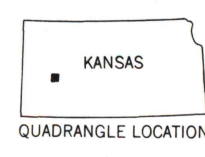
(PIERCEVILLE NE)

Mapped, edited, and published by the Geological Survey  
Control by USGS and NOS/NOAA  
Topography by photogrammetric methods from aerial  
photographs taken 1973. Field checked 1974  
Projection and 10,000-foot grid ticks: Kansas coordinate  
system, south zone (Lambert conformal conic)  
1000-metre Universal Transverse Mercator grid ticks,  
zone 14, shown in blue. 1927 North American datum  
Fine red dashed lines indicate selected fence and field lines where  
generally visible on aerial photographs. This information is unchecked



THIS MAP COMPLIES WITH NATIONAL MAP ACCURACY STANDARDS  
FOR SALE BY U. S. GEOLOGICAL SURVEY, DENVER, COLORADO 80225, OR RESTON, VIRGINIA 22092  
AND STATE GEOLOGICAL SURVEY, LAWRENCE, KANSAS 66044  
A FOLDER DESCRIBING TOPOGRAPHIC MAPS AND SYMBOLS IS AVAILABLE ON REQUEST

U.S. Regional  
Depository Copy  
DO NOT DISCARD



ROAD CLASSIFICATION  
Primary highway, hard surface  
Secondary highway, hard surface  
Interstate Route  
Light-duty road, hard or improved surface  
Unimproved road  
U.S. Route  
State Route

A.H. ROBINSON  
MAP LIBRARY  
JUL 18 1994

NORTH OF PIERCEVILLE, KANS.  
(FORMERLY SCOTT CITY 4 SW)  
38100-A6-TF-024

University of Wisconsin  
Madison

1974

DMA 5860 II SW - SERIES V878