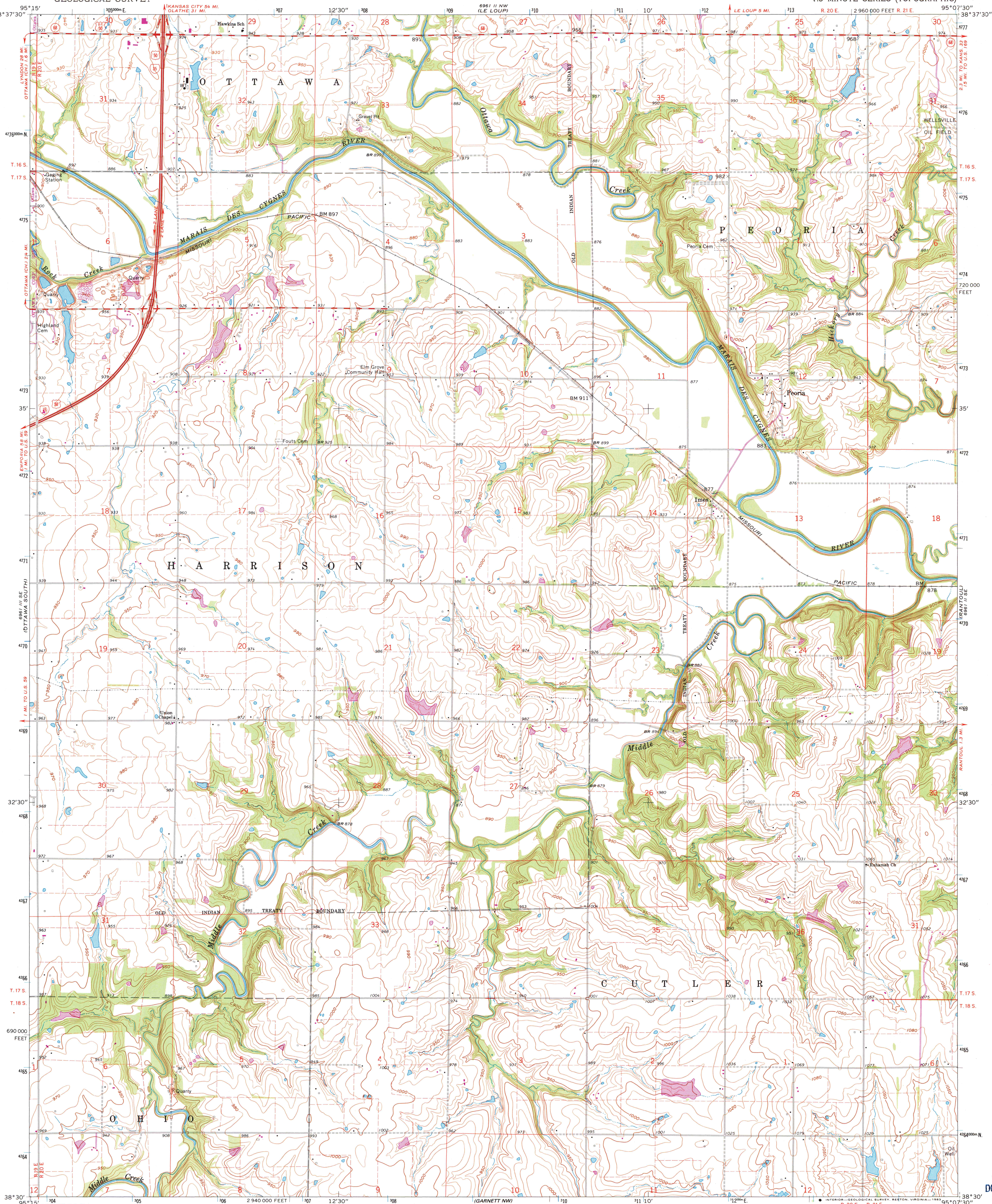


UNITED STATES
DEPARTMENT OF THE INTERIOR
GEOLOGICAL SURVEY

PEORIA QUADRANGLE
KANSAS—FRANKLIN CO.
7.5 MINUTE SERIES (TOPOGRAPHIC)



Mapped, edited, and published by the Geological Survey
Control by USGS and USC&GS

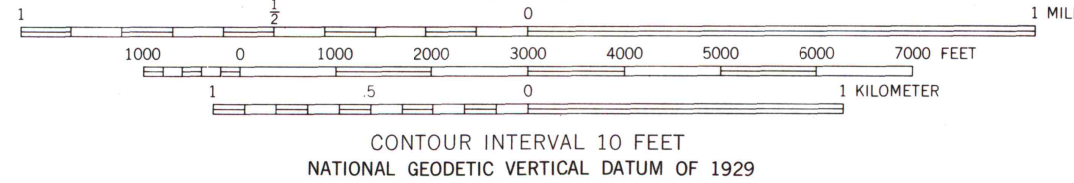
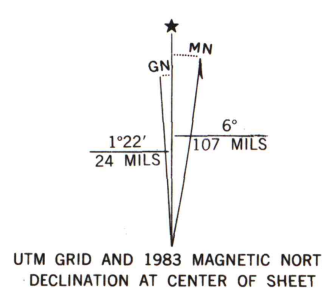
Topography by photogrammetric methods from aerial
photographs taken 1959. Field checked 1962

Polyconic projection. 1927 North American datum
10,000-foot grid based on Kansas coordinate system, south zone
1000-meter Universal Transverse Mercator grid ticks,
zone 15, shown in blue

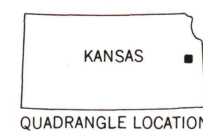
Fine red dashed lines indicate selected fence and field lines where
generally visible on aerial photographs. This information is unchecked

To place on the predicted North American Datum 1983,
move the projection lines 2 meters north and
21 meters east as shown by dashed corner ticks

Revisions shown in purple compiled from aerial photographs taken 1981 and
other sources. This information not field checked. Map edited 1983



THIS MAP COMPLIES WITH NATIONAL MAP ACCURACY STANDARDS
FOR SALE BY U.S. GEOLOGICAL SURVEY, DENVER, COLORADO 80225, OR RESTON, VIRGINIA 22092
AND KANSAS GEOLOGICAL SURVEY, LAWRENCE, KANSAS 66044
A FOLDER DESCRIBING TOPOGRAPHIC MAPS AND SYMBOLS IS AVAILABLE ON REQUEST



ROAD CLASSIFICATION
Heavy-duty ——— Light-duty ———
Medium-duty ——— Unimproved dirt ———
Interstate Route U.S. Route State Route

PEORIA, KANS.
N3830—W9507.5/7.5

1962
PHOTOREVISED 1983
DMA 6961 II SW—SERIES V878

U.S. Region
Depository C
DO NOT DISC

A.H. ROBINSON
MAP LIBRARY

DEC 11 1984

University of Wisconsin
Madison