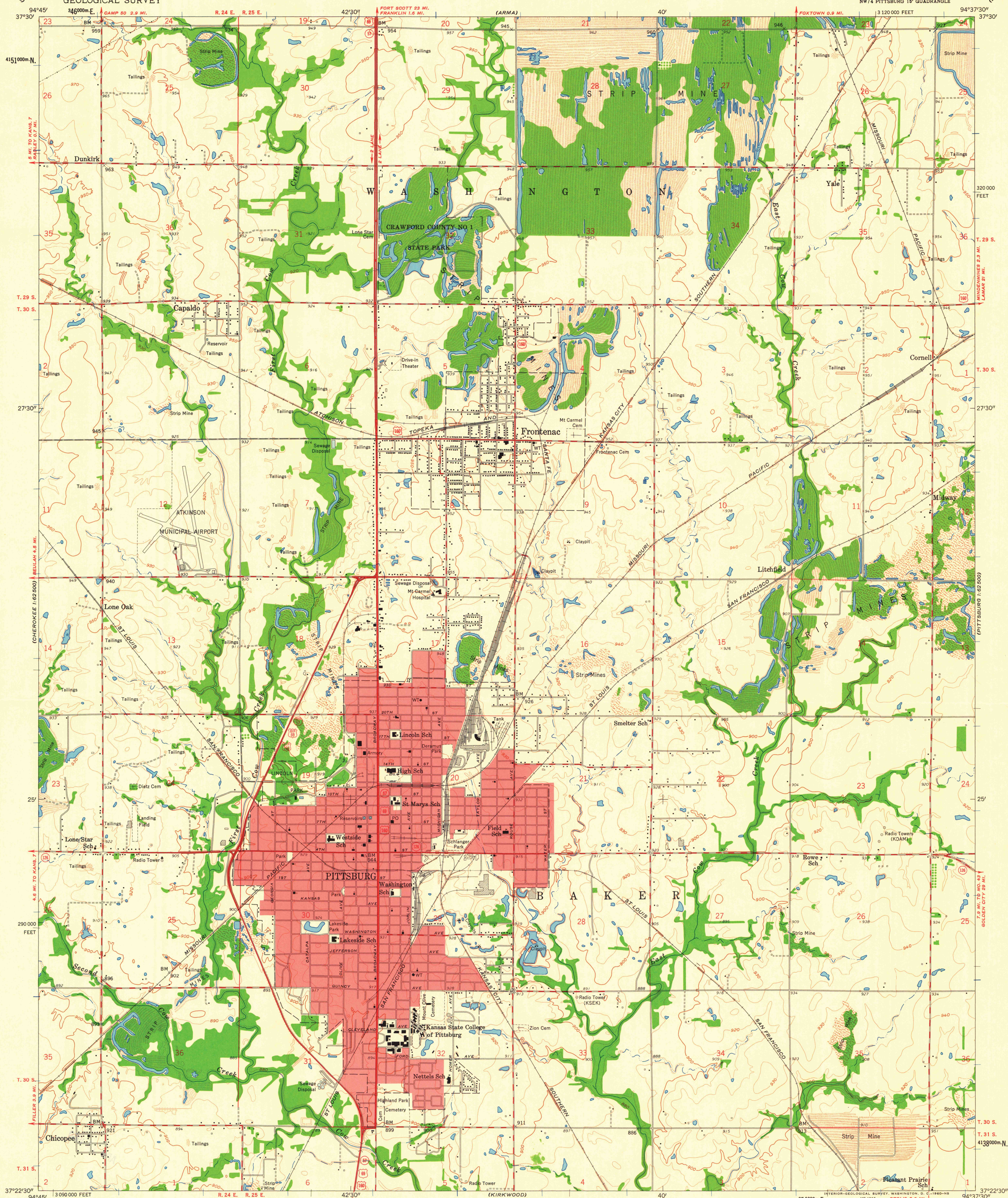


UNITED STATES  
DEPARTMENT OF THE INTERIOR  
GEOLOGICAL SURVEY

STATE OF KANSAS

PITTSBURG QUADRANGLE  
KANSAS—CRAWFORD CO.  
7.5 MINUTE SERIES (TOPOGRAPHIC)  
NW 1/4 PITTSBURG 15' QUADRANGLE



Maped, edited, and published by the Geological Survey  
in cooperation with State of Kansas agencies

Control by USGS and USC&GS

Topography from aerial photographs by photogrammetric methods  
Aerial photographs taken 1958. Field check 1959

Polyconic projection. 1927 North American datum  
10,000-foot grid based on Kansas coordinate system, south zone  
1000-meter Universal Transverse Mercator grid ticks,  
zone 15, shown in blue

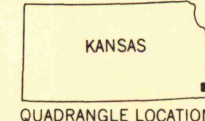
Red tint indicates areas in which only  
landmark buildings are shown

TRUE NORTH  
MAGNETIC NORTH  
APPROXIMATE MEAN  
DECLINATION, 1959

SCALE 1:24,000  
1 MILE  
1 KILOMETER  
CONTOUR INTERVAL 10 FEET  
DATUM IS MEAN SEA LEVEL

THIS MAP COMPLIES WITH NATIONAL MAP ACCURACY STANDARDS  
FOR SALE BY U. S. GEOLOGICAL SURVEY, DENVER 25, COLORADO OR WASHINGTON 25, D. C.  
AND BY THE STATE GEOLOGICAL SURVEY, LAWRENCE, KANSAS  
A FOLDER DESCRIBING TOPOGRAPHIC MAPS AND SYMBOLS IS AVAILABLE ON REQUEST

ROAD CLASSIFICATION  
Heavy-duty ——— Light-duty ———  
Medium-duty ——— Unimproved dirt ———  
U. S. Route ——— State Route ———



PITTSBURG, KANS.  
NW 1/4 PITTSBURG 15' QUADRANGLE  
N 3722.5—W 9437.5/7.5

MAP AND AIR PHOTO LIBRARY  
University of Wisconsin

1959