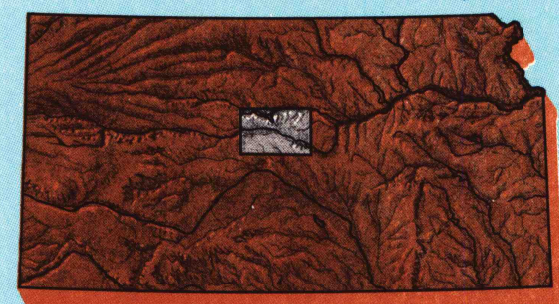


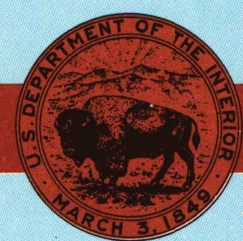
Russell KANSAS

1:100 000-scale metric
topographic map



30 X 60 MINUTE QUADRANGLE
SHOWING

- Contours and elevations in meters
- Highways, roads and other manmade structures
- Water features
- Woodland areas
- Geographic names



GEOLOGICAL SURVEY

1985
PHOTOINSPECTED 1985

Produced by the United States Geological Survey
Compiled from USGS 1:24 000-scale topographic maps dated 1956-1979. Planimetry revised from aerial photographs taken 1981 and other source data. Revised information not field checked. Map edited 1985.
Projection and 10 000-meter grid, zone 14, Universal Transverse Mercator
25 000-foot grid ticks based on Kansas coordinate system, north and south zones
1927 North American Datum
To place on the predicted North American Datum 1983, move the projection lines 2 meters north and 30 meters east
There may be private inholdings within the boundaries of the National or State reservations shown on this map
Map photoinspected using 1985 photographs
No major culture or drainage changes found

CONTOUR INTERVAL 10 METERS
NATIONAL GEODETIC VERTICAL DATUM OF 1929
ELEVATIONS SHOWN TO THE NEAREST METER

THIS MAP COMPLIES WITH NATIONAL MAP ACCURACY STANDARDS

CONVERSION TABLE		DECLINATION DIAGRAM	ADJOINING MAPS
Meters	Feet		
1	3.2808		1 Plainville
2	6.5617		2 Clinton
3	9.8425		3 Clay Center
4	13.1234		4 Hays
5	16.4043		5 Salina
6	19.6852		6 Larned
7	22.9660		7 Green Bend
8	26.2469		8 Hutchinson
9	29.5278		
10	32.8084		
To convert meters to feet multiply by 3.2808		UTM grid convergence (km) and 1983 magnetic declination (MM) at center of map. Diagram is approximate.	
To convert feet to meters multiply by 0.3048			

FOR SALE BY U.S. GEOLOGICAL SURVEY
DENVER, COLORADO 80225, OR RESTON, VIRGINIA 22092

A.H. ROBINSON
MAP LIBRARY

JUL 19 1990

U.S. Regional
Depository Copy
DO NOT DISCARD

University of Wisconsin
Madison
Topographic Map Symbols

Primary highway, hard surface	Secondary highway, hard surface	Light duty road, principal street, hard or improved surface	Other road or street; trail	Route marker: Interstate; U.S. State	Railroad: standard gage; narrow gage	Bridge: overpass; underpass	Tunnel: road; railroad	Built up area; locality; elevation	Airport: landing field; landing strip	National boundary	State boundary	County boundary	National or State reservation boundary	Land grant boundary	U.S. public lands survey: range, township, section	Range, township, section line: protracted	Power transmission line: pipeline	Dam; dam with lock	Cemetery; building	Windmill; water well; spring	Mine shaft: adit or cave; mine, quarry; gravel pit	Campground; picnic area; U.S. location monument	Ruin; cliff dwelling	Distorted surface: strip mine, lava, sand	Contours: index; intermediate; supplementary	Bathymetric contours: index; intermediate	Stream, lake, perennial; intermittent	Rough, large and small; lake, large and small	Area to be submerged; marsh, swamp	Land subject to controlled inundation; woodland	Scrub; mangrove	Orchard; vineyard
-------------------------------	---------------------------------	---	-----------------------------	--------------------------------------	--------------------------------------	-----------------------------	------------------------	------------------------------------	---------------------------------------	-------------------	----------------	-----------------	--	---------------------	--	---	-----------------------------------	--------------------	--------------------	------------------------------	--	---	----------------------	---	--	---	---------------------------------------	---	------------------------------------	---	-----------------	-------------------

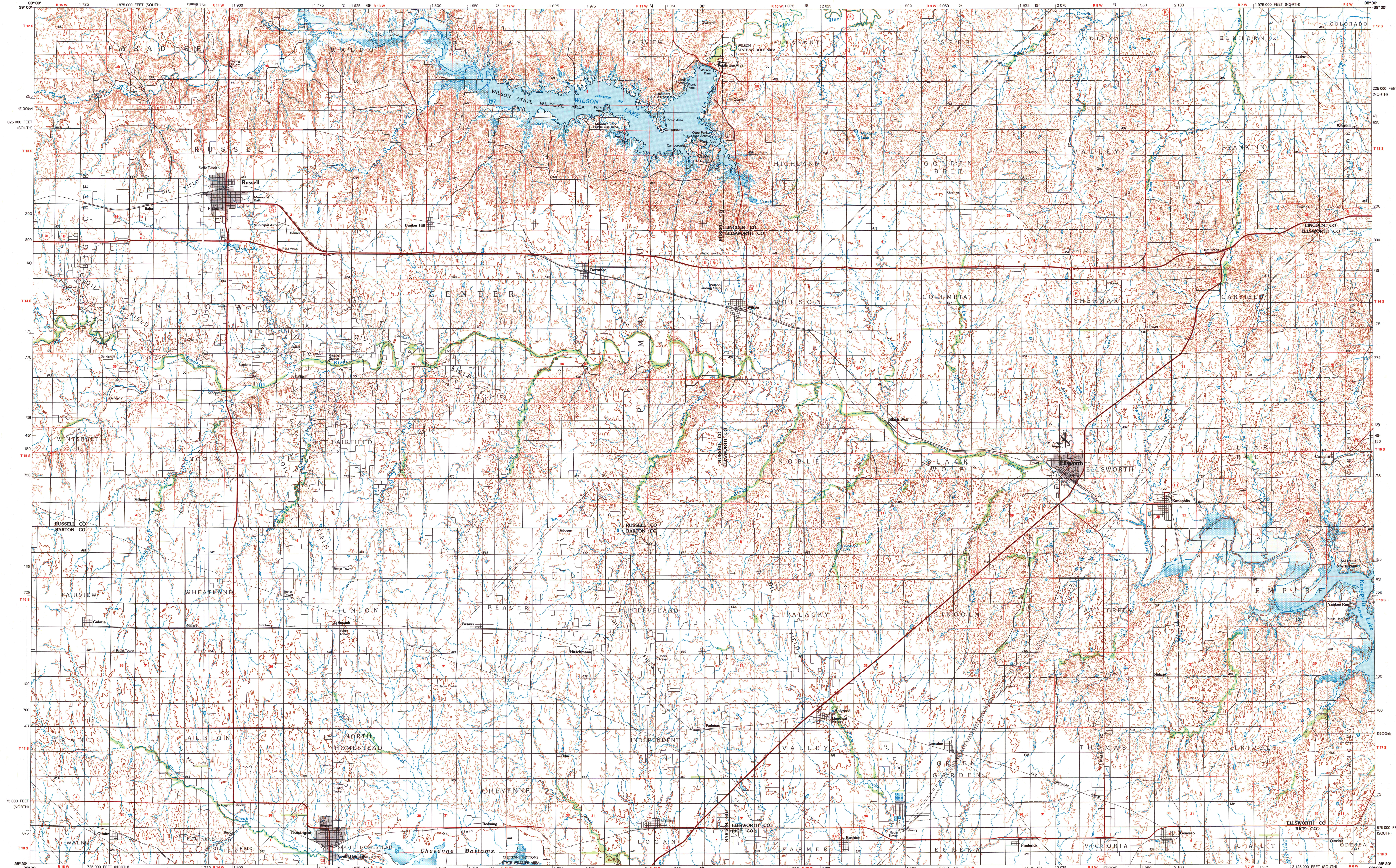
A pamphlet describing topographic maps is available on request

B006-9%

SET

RUSSELL, KANSAS

30 X 60 MINUTE SERIES (TOPOGRAPHIC)



INTERIOR—GEOLOGICAL SURVEY, RESTON, VIRGINIA—1980

KILOMETERS 1 0 1 2 3 4 5 6 7 8 9 10 11 12 13 14 15 16 17 18 19 20

SCALE 1:100 000

1 CENTIMETER ON THE MAP REPRESENTS 1 KILOMETER ON THE GROUND
CONTOUR INTERVAL 10 METERS

1000 0 5000 10000 15000 20000 25000 30000 35000 40000 45000 50000 55000 60000 65000 70000 METERS

RUSSELL, KANSAS
38098-E1-TM-100
1985
PHOTOINSPECTED 1985