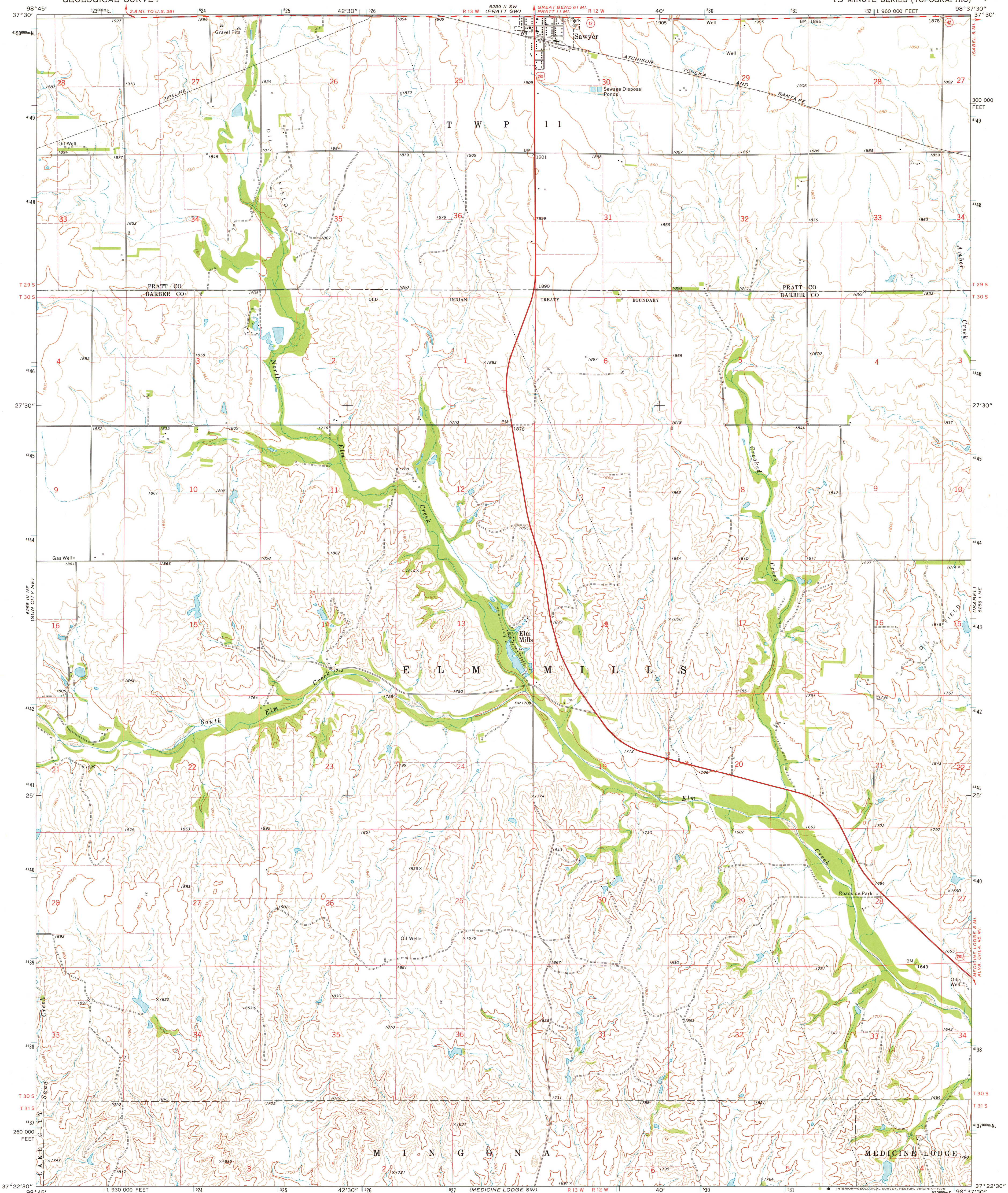


6258 11 SW  
(PRATT SW)

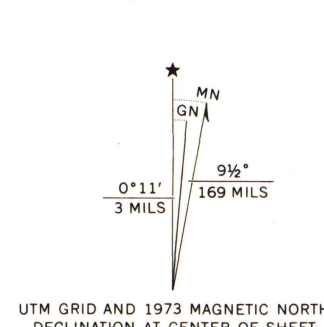
UNITED STATES  
DEPARTMENT OF THE INTERIOR  
GEOLOGICAL SURVEY

SAWYER QUADRANGLE  
KANSAS  
7.5 MINUTE SERIES (TOPOGRAPHIC)

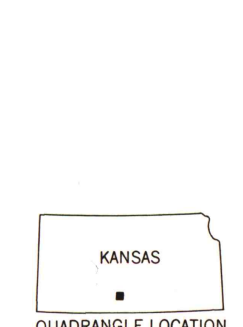
6258 11 SE  
(PRATT SE)



Mapped, edited, and published by the Geological Survey  
Control by USGS and NOS/NOAA  
Topography by photogrammetric methods from aerial  
photographs taken 1971. Field checked 1973  
Projection and 10,000-foot grid ticks: Kansas coordinate  
system, south zone (Lambert conformal conic)  
1000-metre Universal Transverse Mercator grid ticks,  
zone 14, shown in blue. 1927 North American datum  
Fine red dashed lines indicate selected fence and field lines where  
generally visible on aerial photographs. This information is unchecked



CONTOUR INTERVAL 20 FEET  
DOTTED LINES REPRESENT 10-FOOT CONTOURS  
NATIONAL GEODETIC VERTICAL DATUM OF 1929



ROAD CLASSIFICATION  
Primary highway, hard surface  
Secondary highway, hard surface  
Interstate Route  
U.S. Route  
State Route  
Light-duty road, hard or improved surface  
Unimproved road

MAP AND AIR PHOTO  
LIBRARY  
FEB 14 1976

SAWYER, KANS.  
N3722.5-W9837.5/7.5

1973

AMS 6258 1 NW-SERIES V878

University of Wisconsin