

6758 11 SE (HALL)
6758 11 NE (HALL)
6758 11 NW (HALL)
6758 11 SW (HALL)
6758 11 SE (HALL)
6758 11 NE (HALL)
6758 11 NW (HALL)
6758 11 SW (HALL)

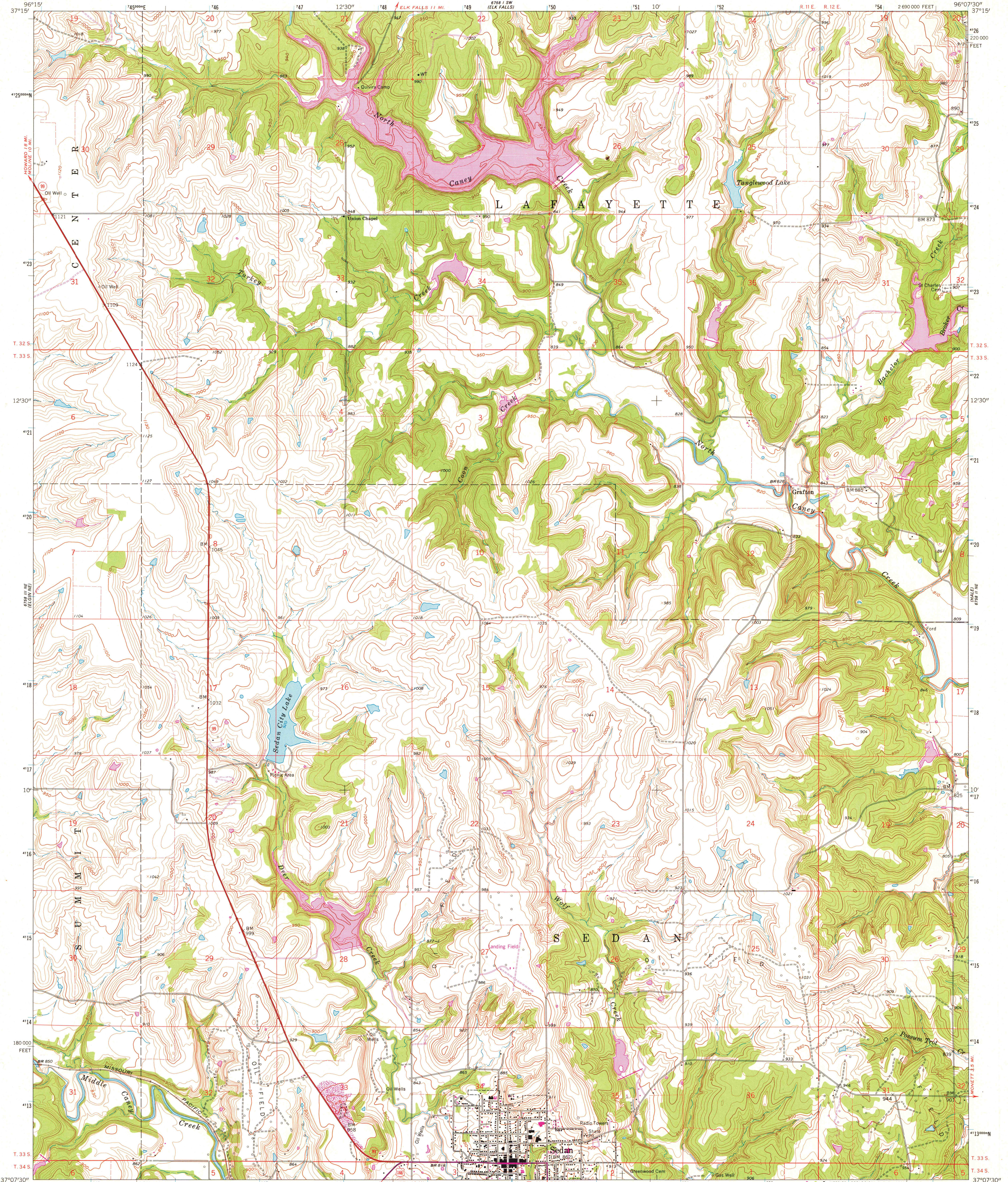
UNITED STATES
DEPARTMENT OF THE INTERIOR
GEOLOGICAL SURVEY



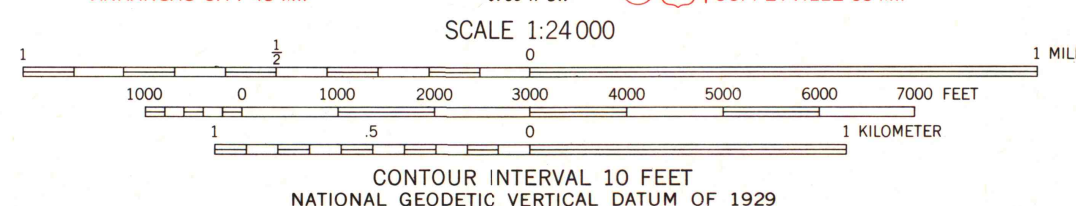
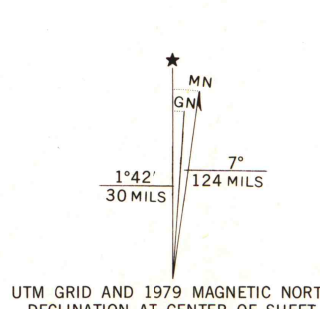
STATE OF KANSAS

SEDAN QUADRANGLE
KANSAS—CHAUTAUQUA CO.
7.5 MINUTE SERIES (TOPOGRAPHIC)

6758 11 SE (HALL)
6758 11 NE (HALL)
6758 11 NW (HALL)
6758 11 SW (HALL)
6758 11 SE (HALL)
6758 11 NE (HALL)
6758 11 NW (HALL)
6758 11 SW (HALL)



Mapped, edited, and published by the Geological Survey
in cooperation with State of Kansas agencies
Control by USGS and USC&GS
Topography by photogrammetric methods from aerial
photographs taken 1960. Field checked 1962
Polyconic projection. 1927 North American datum
10,000-foot grid based on Kansas coordinate system, south zone
1000-meter Universal Transverse Mercator grid ticks,
zone 14, shown in blue
Fine red dashed lines indicate selected fence and field lines where
generally visible on aerial photographs. This information is unchecked
Revisions shown in purple compiled from aerial photographs
taken 1976 and other source data. This information not
field checked. Map edited 1979



THIS MAP COMPLIES WITH NATIONAL MAP ACCURACY STANDARDS
FOR SALE BY U.S. GEOLOGICAL SURVEY, DENVER, COLORADO 80225, OR RESTON, VIRGINIA 22092
AND STATE GEOLOGICAL SURVEY, LAWRENCE, KANSAS 66044
A FOLDER DESCRIBING TOPOGRAPHIC MAPS AND SYMBOLS IS AVAILABLE ON REQUEST

ROAD CLASSIFICATION

Heavy-duty	Light-duty
Medium-duty	Unimproved dirt
U.S. Route	State Route

MAP AND AIR PHOTO
LIBRARY
JUN 13 1979
University of Wisconsin
Madison

SEDAN, KANS.
N 37°07.5'—W 96°07.5' 7.5
1962
PHOTOREVISED 1979
AMS 6758 11 NW—SERIES V878