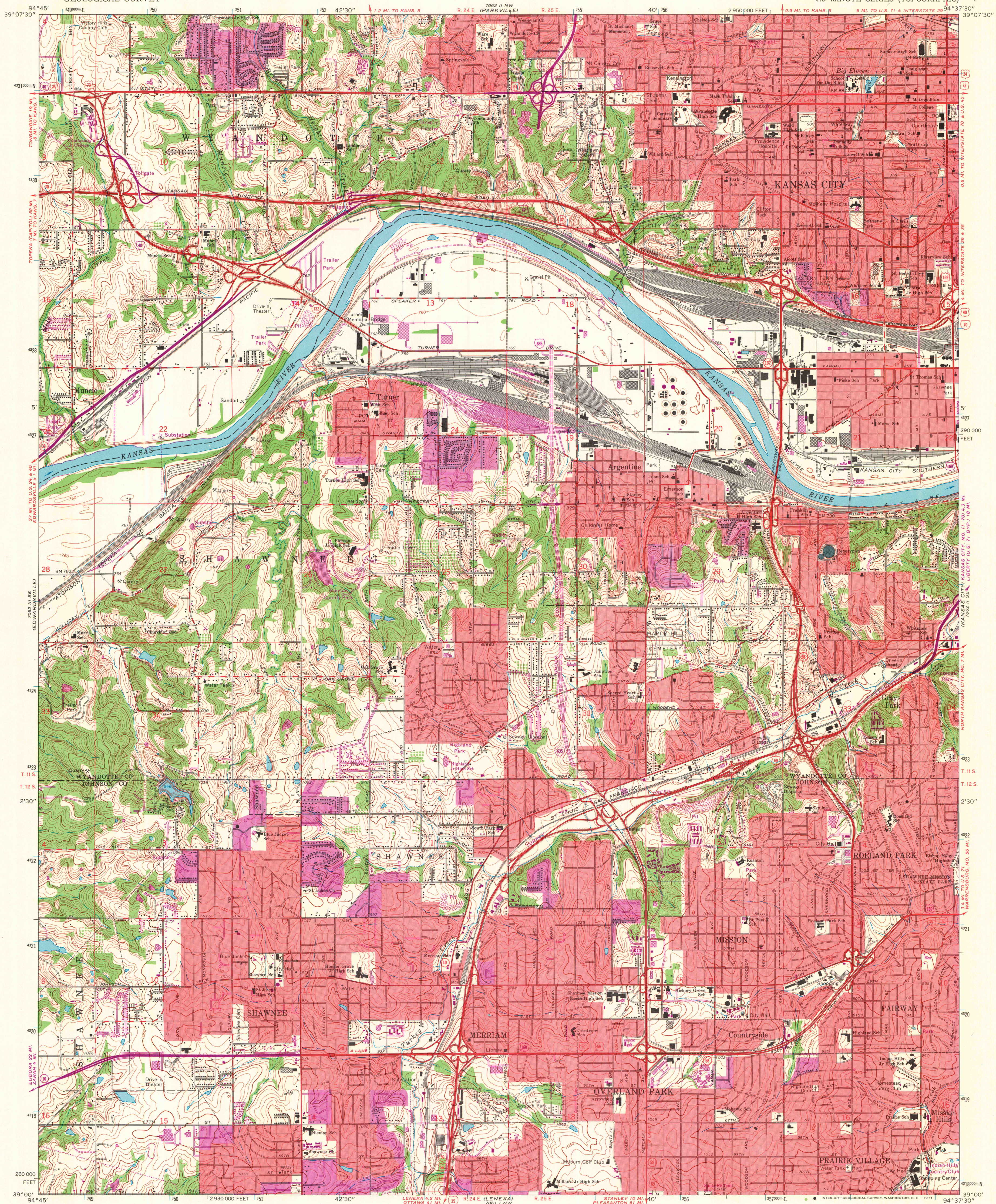


7000 11 NE  
7000 11 NE  
7000 11 NE

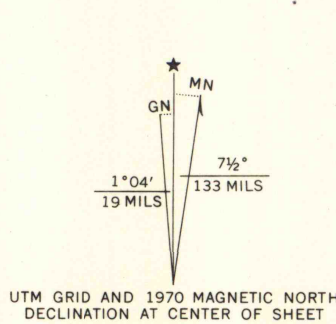
UNITED STATES  
DEPARTMENT OF THE INTERIOR  
GEOLOGICAL SURVEY

SHAWNEE QUADRANGLE  
KANSAS  
7.5 MINUTE SERIES (TOPOGRAPHIC)

7000 11 NE  
7000 11 NE  
7000 11 NE



Maped, edited, and published by the Geological Survey  
Control by USGS and USC&GS  
Planimetry by photogrammetric methods from aerial photographs taken 1955. Topography by planimetric surveys 1933-34. Revised 1964  
Polyconic projection. 1927 North American datum  
10,000-foot grid based on Kansas coordinate system, north zone  
1000-meter Universal Transverse Mercator grid ticks, zone 15, shown in blue  
Red tint indicates areas in which only landmark buildings are shown  
Revisions shown in purple compiled from aerial photographs taken 1970. This information not field checked  
Purple tint indicates extension of urban areas



SCALE 1:24,000  
CONTOUR INTERVAL 10 FEET  
DATUM IS MEAN SEA LEVEL  
THIS MAP COMPLIES WITH NATIONAL MAP ACCURACY STANDARDS  
FOR SALE BY U.S. GEOLOGICAL SURVEY, DENVER, COLORADO 80225, OR WASHINGTON, D.C. 20242  
AND BY THE STATE GEOLOGICAL SURVEY, LAWRENCE, KANSAS 66044  
A FOLDER DESCRIBING TOPOGRAPHIC MAPS AND SYMBOLS IS AVAILABLE ON REQUEST

ROAD CLASSIFICATION  
Heavy-duty ——— Light-duty ———  
Medium-duty ——— Unimproved dirt ———  
Interstate Route ——— U.S. Route ——— State Route ———  
MAP AND AIR PHOTO  
LIBRARY  
DEC 3 - 1971  
SHAWNEE, KANS.  
N3900-W9437.5/7.5  
1964  
PHOTOREVISED 1970  
AMS 7062 II SW-SERIES V878

7000 11 NE  
7000 11 NE  
7000 11 NE