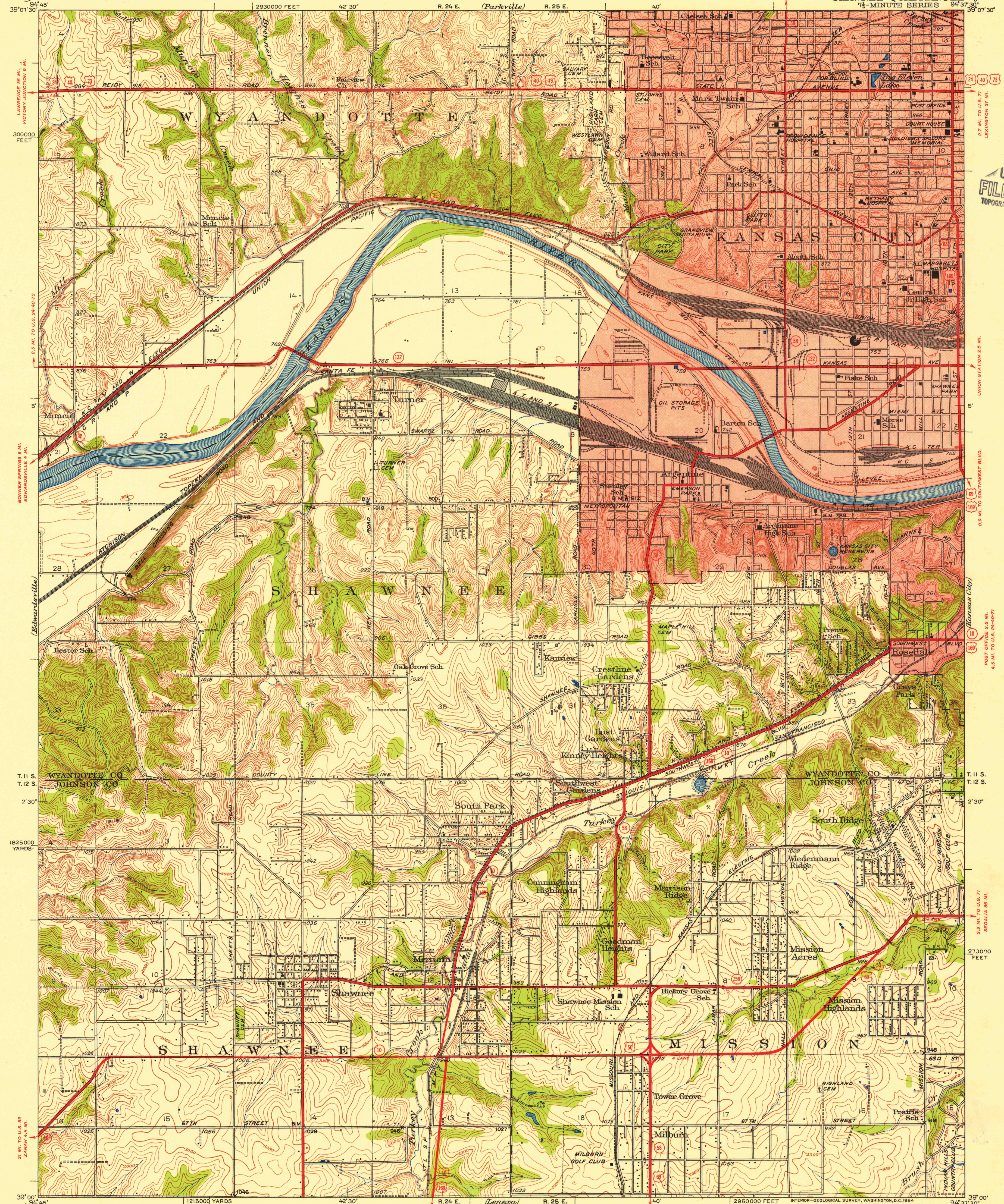


UNITED STATES
DEPARTMENT OF THE INTERIOR
GEOLOGICAL SURVEY

KANSAS
SHAWNEE QUADRANGLE
7 1/2-MINUTE SERIES



Topography by C. A. Killian, J. M. Patterson,
L. V. Johnson, Frank H. Nelson, R. E. Bending,
and C. C. Addison
Surveyed in 1933 and 1934
Red tint indicates areas in which only
landmark buildings are shown

TRUE NORTH
MAGNETIC NORTH
APPROXIMATE MEAN
DECLINATION, 1934

SCALE 1:24000
CONTOUR INTERVAL 10 FEET
DATUM IS MEAN SEA LEVEL
FOR SALE BY U.S. GEOLOGICAL SURVEY, FEDERAL CENTER, DENVER, COLORADO OR WASHINGTON 25, D.C.
AND BY THE STATE GEOLOGICAL SURVEY, LAWRENCE, KANSAS
A FOLDER DESCRIBING TOPOGRAPHIC MAPS AND SYMBOLS IS AVAILABLE ON REQUEST

ROAD CLASSIFICATION
Heavy-duty — 4 LANE 16 LANE Light-duty —
Medium-duty — 4 LANE 16 LANE Unimproved dirt —
U. S. Route — State Route

Polyconic projection, 1927 North American datum
5000 yard grid based on U.S. zone system, D
10000 foot grid based on Kansas (North)
rectangular coordinate system

SHAWNEE, KANS.
N3900-W9437.5

USGS
Historical File
Topographic Division
TOPOGRAPHIC DIVISION

1934