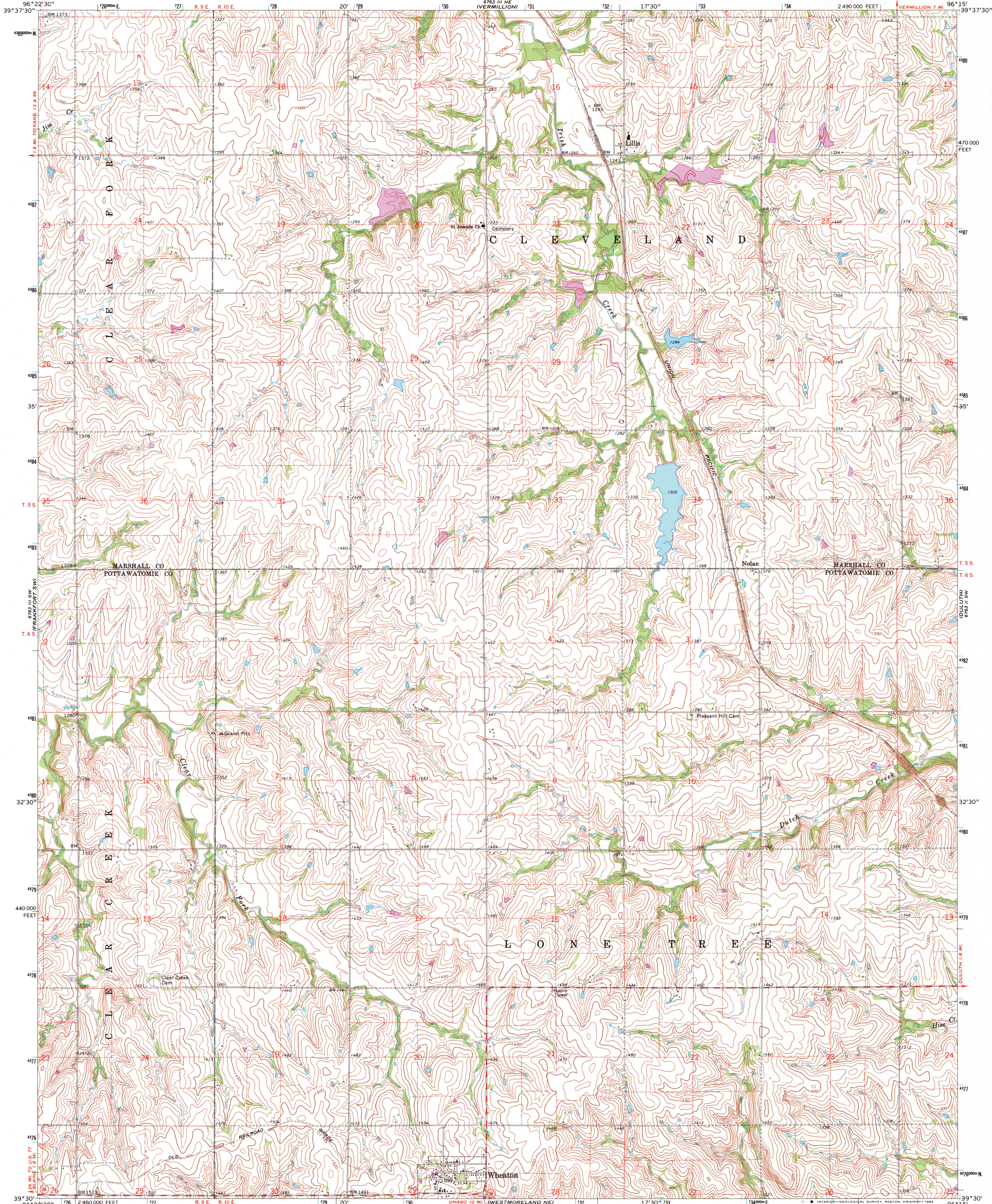


UNITED STATES
DEPARTMENT OF THE INTERIOR
GEOLOGICAL SURVEY

WHEATON QUADRANGLE
KANSAS
7.5 MINUTE SERIES (TOPOGRAPHIC)



Mapped, edited, and published by the Geological Survey

Control by USGS and USC&GS

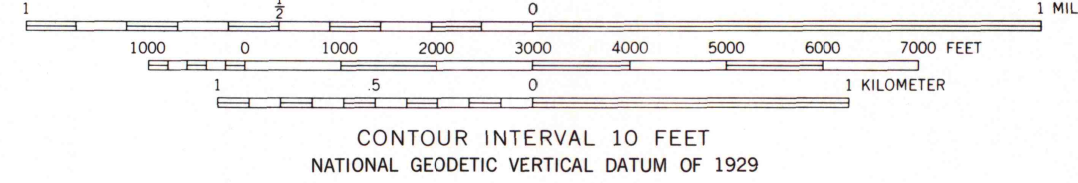
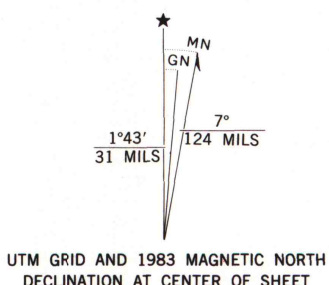
Topography by photogrammetric methods from aerial photographs taken 1967. Field checked 1969

Polyconic projection. 1927 North American datum
10,000-foot grid based on Kansas coordinate system, north zone
1000-meter Universal Transverse Mercator grid ticks,
zone 14, shown in blue

Fine red dashed lines indicate selected fence and field lines where generally visible on aerial photographs. This information is unchecked

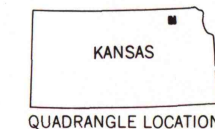
To place on the predicted North American Datum 1983,
move the projection lines 3 meters north and
25 meters east as shown by dashed corner ticks

Revisions shown in purple compiled from aerial photographs taken 1981 and other sources. This information not field checked. Map edited 1983



CONTOUR INTERVAL 10 FEET
NATIONAL GEODETIC VERTICAL DATUM OF 1929

THIS MAP COMPLIES WITH NATIONAL MAP ACCURACY STANDARDS
FOR SALE BY U.S. GEOLOGICAL SURVEY, DENVER, COLORADO 80225, OR RESTON, VIRGINIA 22092
AND KANSAS GEOLOGICAL SURVEY, LAWRENCE, KANSAS 66044
A FOLDER DESCRIBING TOPOGRAPHIC MAPS AND SYMBOLS IS AVAILABLE ON REQUEST



ROAD CLASSIFICATION
Secondary highway, all weather, Light-duty road, all weather,
hard surface Improved surface
Unimproved road, fair or dry
weather
State Route

WHEATON, KANS.
N3930-W9615/7.5

1969
PHOTOREVISED 1983
DMA 6763 III SE-SERIES V878

U.S. Regional
Library
DO NOT DIS

NOV 20 1984

University of Wisconsin
Madison