

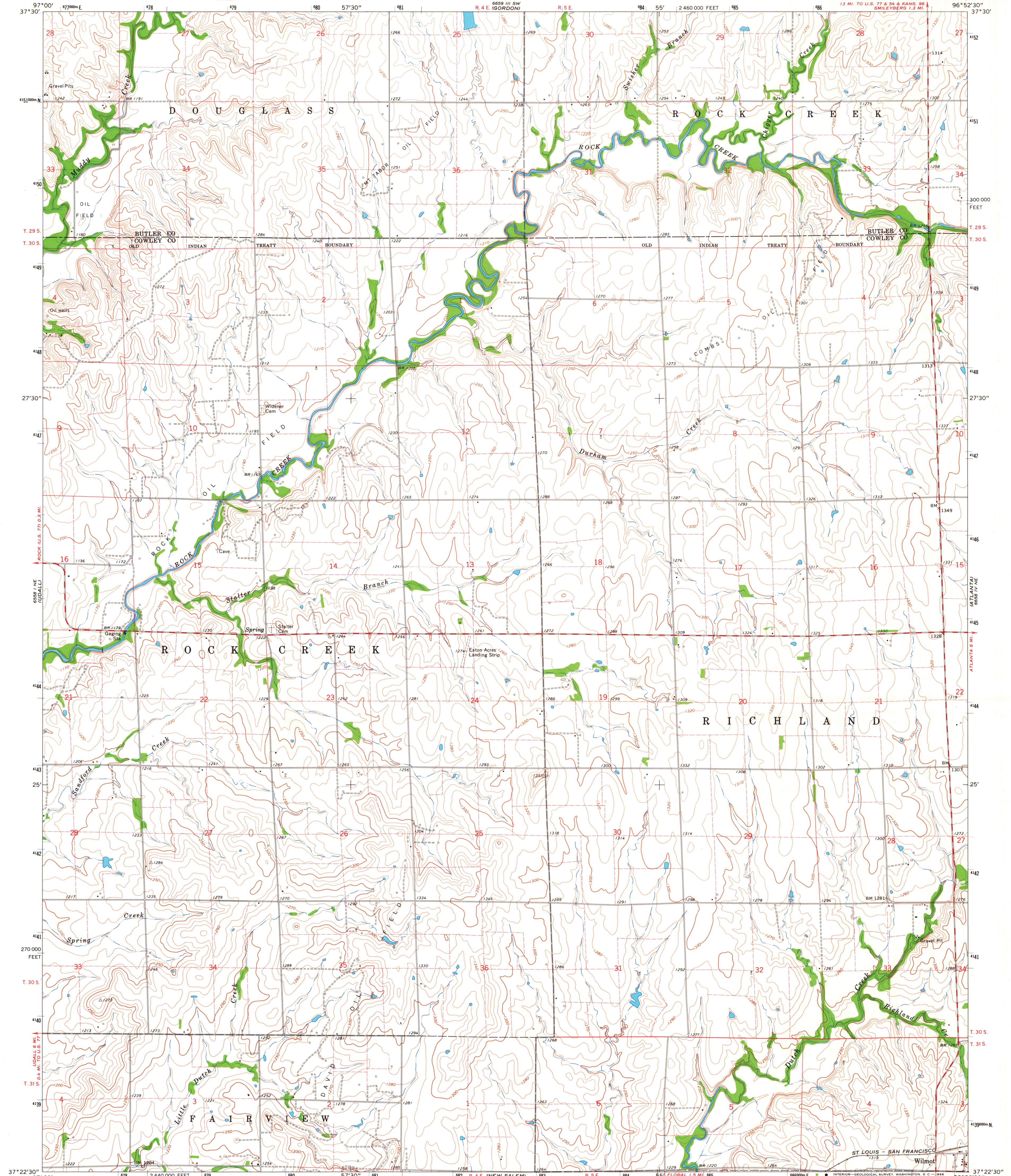
6658 IV SW  
(DOUGLASS)

UNITED STATES  
DEPARTMENT OF THE INTERIOR  
GEOLOGICAL SURVEY

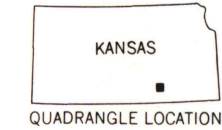
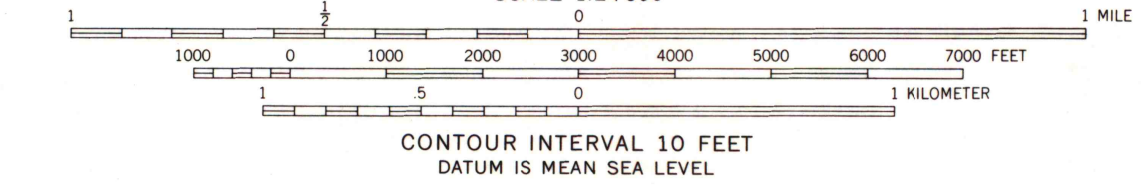
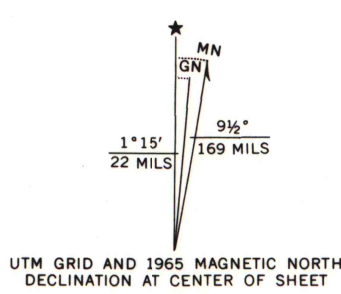
STATE OF KANSAS

WILMOT QUADRANGLE  
KANSAS  
7.5 MINUTE SERIES (TOPOGRAPHIC)  
13 MI. TO U.S. 77 & 54 & KANS. 96  
SMILEYBERG 1.3 MI.

6658 IV SE  
(AUGUSTA 56)



Mapped, edited, and published by the Geological Survey  
in cooperation with State of Kansas agencies  
Control by USGS and USC&GS  
Topography by photogrammetric methods from aerial  
photographs taken 1963. Field checked 1964-65  
Polyconic projection. 1927 North American datum  
10,000-foot grid based on Kansas coordinate system, south zone  
1000-meter Universal Transverse Mercator grid ticks,  
zone 14, shown in blue  
Fine red dashed lines indicate selected fence and field lines where  
generally visible on aerial photographs. This information is unchecked



ROAD CLASSIFICATION  
Medium-duty ——— Light-duty ———  
Unimproved dirt ———

MAP AND AIR PHOTO LIBRARY  
University of Wisconsin

WILMOT, KANS.  
N3722.5—W9652.5/7.5

1965

AMS 6658 IV NW—SERIES V878

THIS MAP COMPLIES WITH NATIONAL MAP ACCURACY STANDARDS  
FOR SALE BY U.S. GEOLOGICAL SURVEY, DENVER, COLORADO 80225 OR WASHINGTON, D.C. 20242  
AND BY THE STATE GEOLOGICAL SURVEY, LAWRENCE, KANSAS  
A FOLDER DESCRIBING TOPOGRAPHIC MAPS AND SYMBOLS IS AVAILABLE ON REQUEST