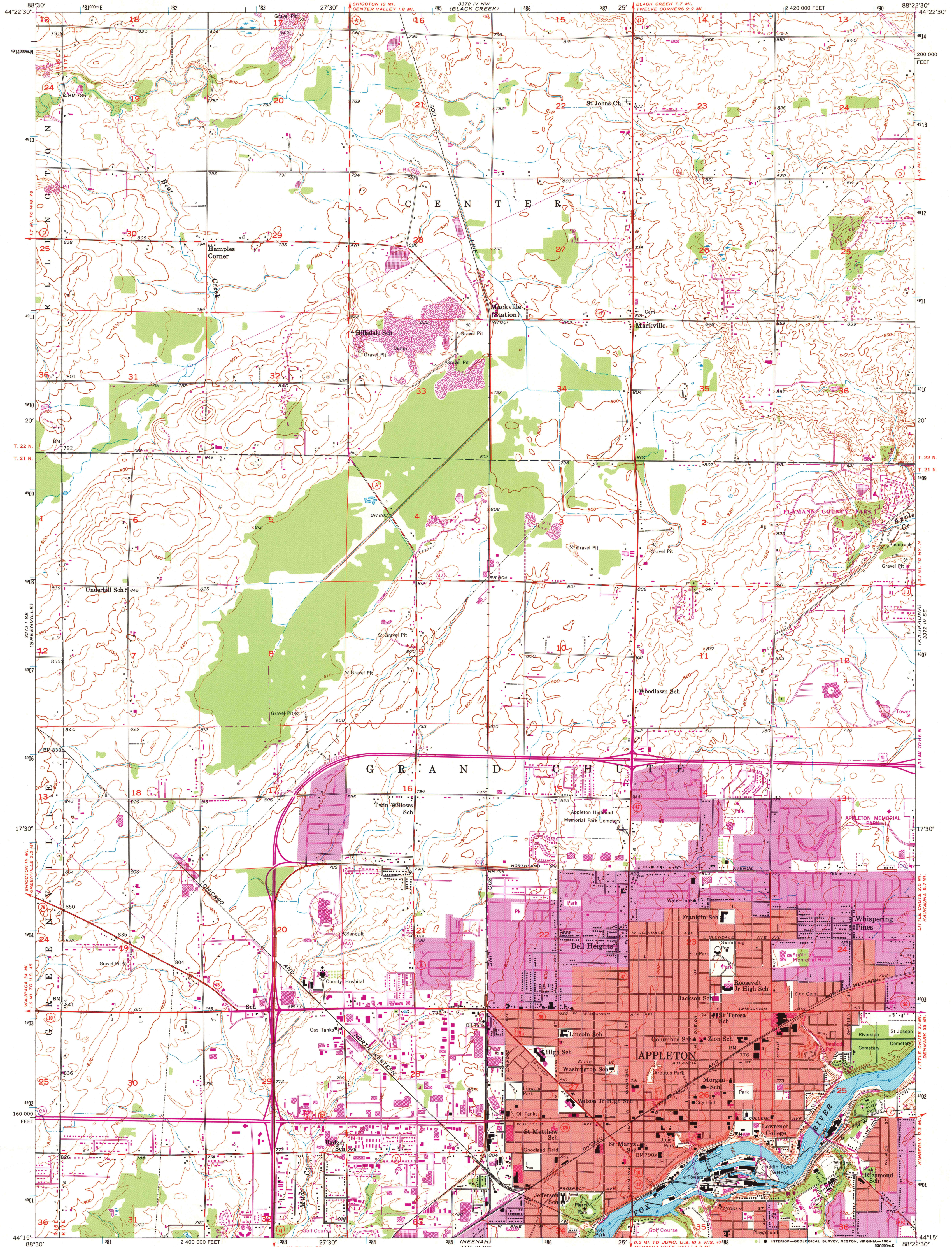


UNITED STATES
DEPARTMENT OF THE INTERIOR
GEOLOGICAL SURVEY

APPLETON QUADRANGLE
WISCONSIN-OUTAGAMIE CO.
7.5 MINUTE SERIES (TOPOGRAPHIC)
SW/4 APPLETON 15' QUADRANGLE



Mapped, edited, and published by the Geological Survey
Control by USGS and USC&GS

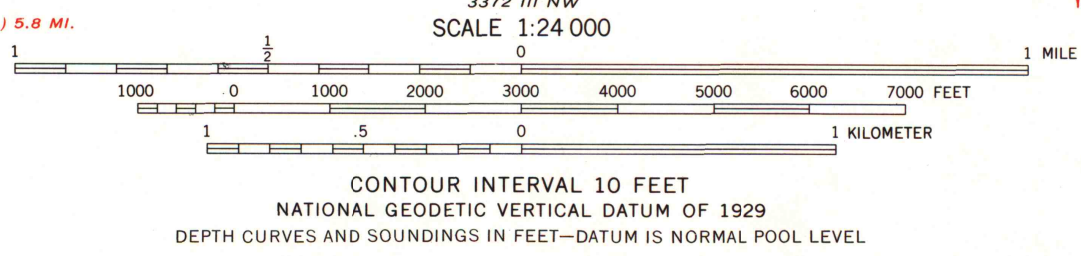
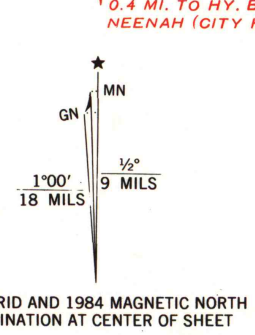
Topography from aerial photographs by Kelsh plotter
Aerial photographs taken 1953. Field check 1955
Hydrography compiled from U.S. Lake Survey chart 726 (1951)

Polyconic projection. 1927 North American datum
10,000-foot grid based on Wisconsin coordinate system,
central zone

Red tint indicates areas in which only
landmark buildings are shown

1000-meter Universal Transverse Mercator grid ticks,
zone 16, shown in blue

To place on the predicted North American Datum 1983,
move the projection lines 5 meters north and
8 meters east as shown by dashed corner ticks



CONTOUR INTERVAL 10 FEET
NATIONAL GEODETIC VERTICAL DATUM OF 1929
DEPTH CURVES AND SOUNDINGS IN FEET—DATUM IS NORMAL POOL LEVEL

THIS MAP COMPLIES WITH NATIONAL MAP ACCURACY STANDARDS
FOR SALE BY U.S. GEOLOGICAL SURVEY, RESTON, VIRGINIA 22092
AND WISCONSIN GEOLOGICAL AND NATURAL HISTORY SURVEY, MADISON, WISCONSIN 53706
A FOLDER DESCRIBING TOPOGRAPHIC MAPS AND SYMBOLS IS AVAILABLE ON REQUEST



QUADRANGLE LOCATION
Revisions shown in purple compiled from aerial
photographs taken 1982 and other sources
This information not field checked. Map edited 1984
Purple tint indicates extension of urban area

ROAD CLASSIFICATION	
Primary highway, hard surface	Light-duty road, hard or improved surface
Secondary highway, hard surface	Unimproved road
Interstate Route	U.S. Route
	State Route

APPLETON, WIS.
SW/4 APPLETON 15' QUADRANGLE
44088-C4-TF-024

1955
PHOTOREVISED 1984
DMA 3372 IV SW—SERIES 861

A.H. ROBINSON
MAP LIBRARY
APR 29 1985
University of Wisconsin
Madison

1984
COPY
1-1
U.S. Regional
Depository Copy
DO NOT DISCARD