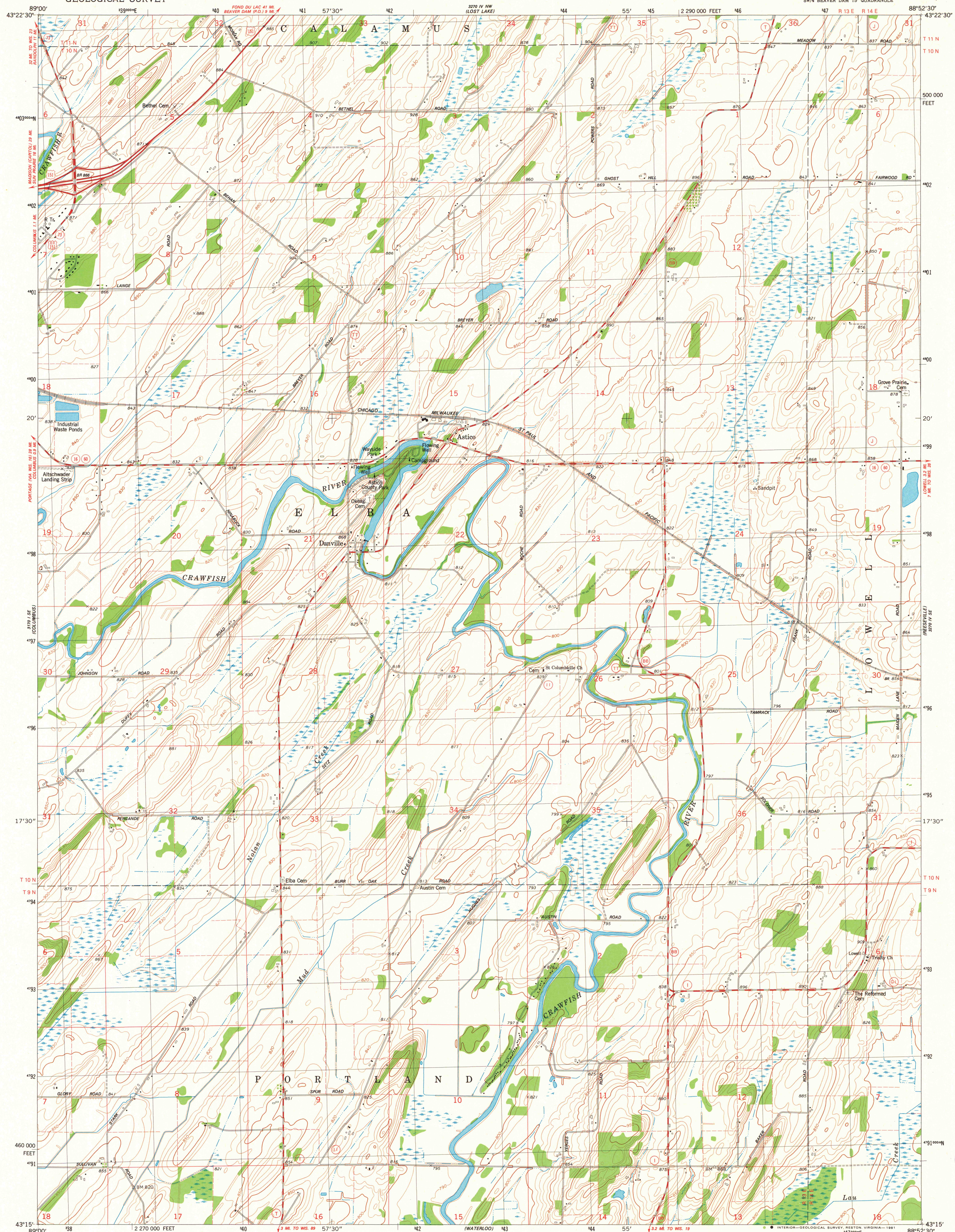
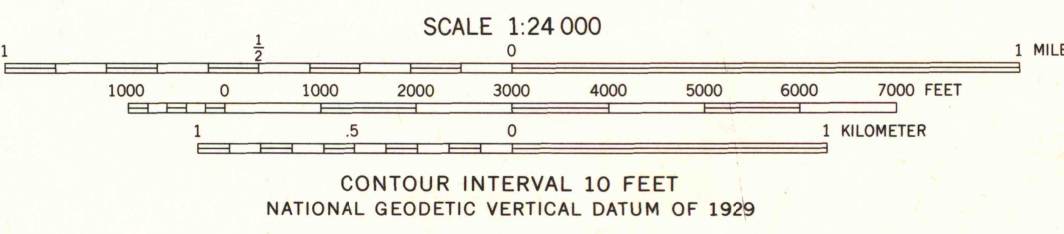
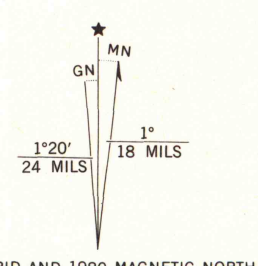


UNITED STATES  
DEPARTMENT OF THE INTERIOR  
GEOLOGICAL SURVEY

ASTICO QUADRANGLE  
WISCONSIN—DODGE CO.  
7.5 MINUTE SERIES (TOPOGRAPHIC)  
SW 1/4 BEAVER DAM 15' QUADRANGLE



Mapped, edited, and published by the Geological Survey  
Control by USGS and NOS/NOAA  
Topography by photogrammetric methods from aerial photographs taken 1975. Field checked 1976. Map edited 1980  
Projection and 10,000-foot grid ticks: Wisconsin coordinate system, south zone (Lambert conformal conic)  
1000-meter Universal Transverse Mercator grid, zone 16  
1927 North American Datum  
To place on the predicted North American Datum 1983 move the projection lines 4 meters north and 9 meters east as shown by dashed corner ticks  
Fine red dashed lines indicate selected fence and field lines where generally visible on aerial photographs. This information is unchecked



ROAD CLASSIFICATION  
Primary highway, hard surface  
Secondary highway, hard surface  
Light-duty road, hard or improved surface  
Unimproved road  
Interstate Route  
U.S. Route  
State Route

ASTICO, WIS.  
SW 1/4 BEAVER DAM 15' QUADRANGLE  
N4315-W8852.5/7.5  
1980  
DMA 3270 IV SW-SERIES Y861

MAP AND AIR PHOTO LIBRARY  
FEB 13 1981  
University of Wisconsin  
Madison

1980  
COPY  
1-1