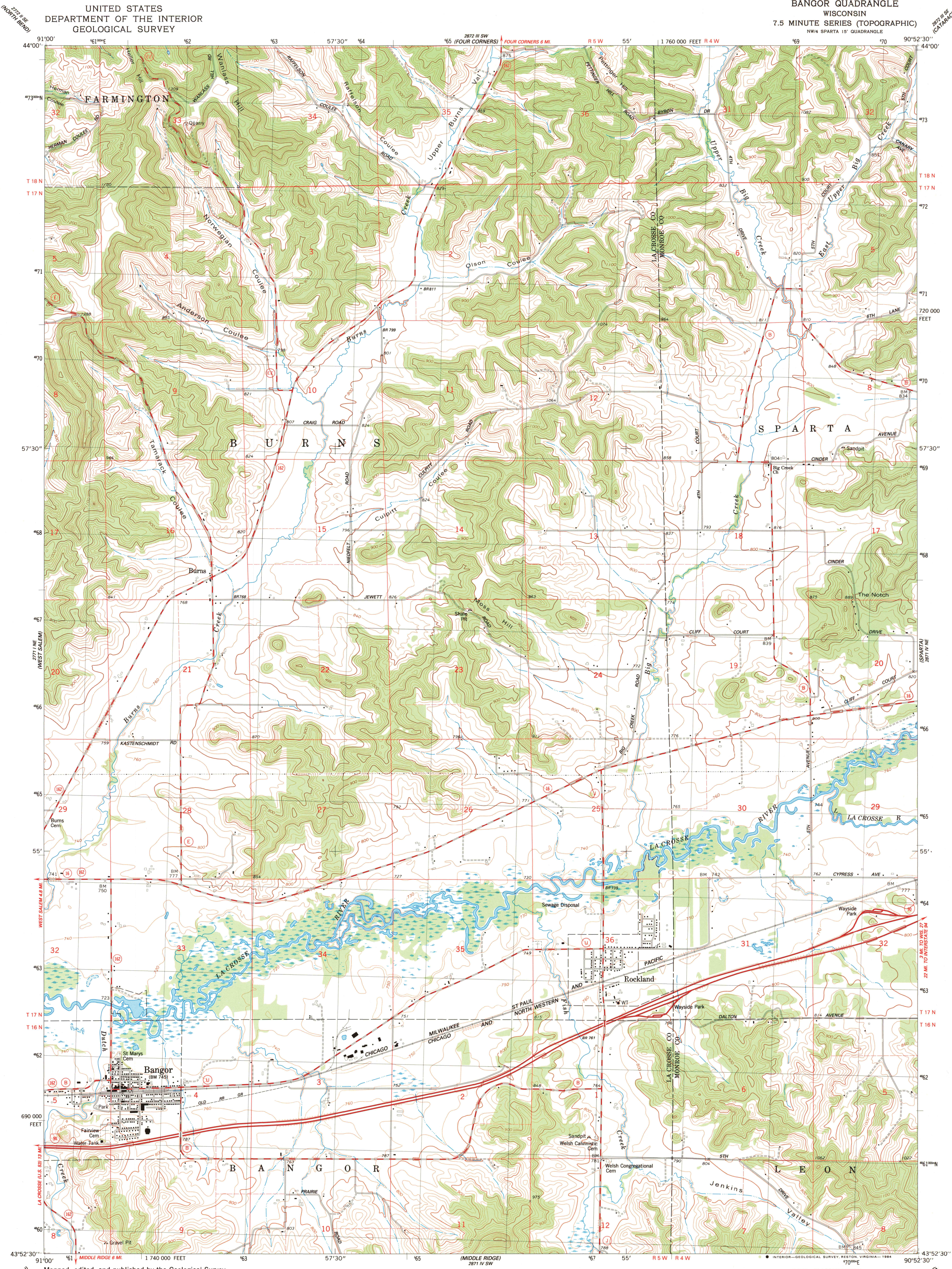


UNITED STATES
DEPARTMENT OF THE INTERIOR
GEOLOGICAL SURVEY

BANGOR QUADRANGLE
WISCONSIN
7.5 MINUTE SERIES (TOPOGRAPHIC)
NW/4 SPARTA 15' QUADRANGLE



Mapped, edited, and published by the Geological Survey

Control by USGS and NOS/NOAA

Topography by photogrammetric methods from aerial photographs
taken 1978. Field checked 1980. Map edited 1983

Projection and 10,000-foot grid ticks: Wisconsin coordinate
system, south zone (Lambert conformal conic)

1000-meter Universal Transverse Mercator grid, zone 15

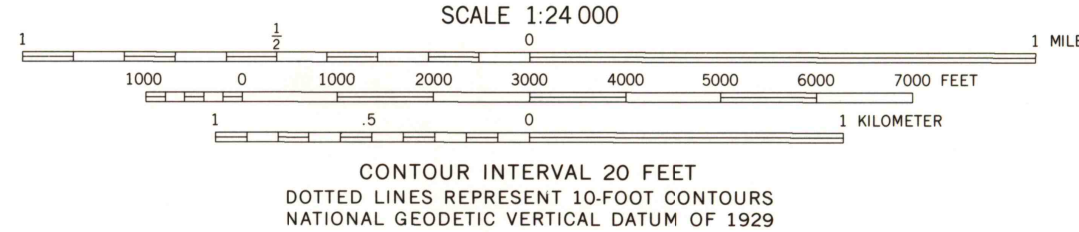
1927 North American Datum

To place on the predicted North American Datum 1983

move the projection lines 7 meters north and

12 meters east as shown by dashed corner ticks

Fine red dashed lines indicate selected fence and field lines where
generally visible on aerial photographs. This information is unchecked



ROAD CLASSIFICATION
Primary highway, hard surface
Secondary highway, hard surface
Unimproved road
Interstate Route
U.S. Route
State Route



THIS MAP COMPLIES WITH NATIONAL MAP ACCURACY STANDARDS
FOR SALE BY U.S. GEOLOGICAL SURVEY, RESTON, VIRGINIA 22092
AND WISCONSIN GEOLOGICAL AND NATURAL HISTORY SURVEY, MADISON, WISCONSIN 53706
A FOLDER DESCRIBING TOPOGRAPHIC MAPS AND SYMBOLS IS AVAILABLE ON REQUEST

BANGOR, WIS.
NW/4 SPARTA 15' QUADRANGLE
N4352.5-W9052.5/7.5

1983

DMA 2871 IV NW-SERIES V861

RETURN TO:
USGS AND HISTORICAL MAP ARCHIVES

MAY 2 1984