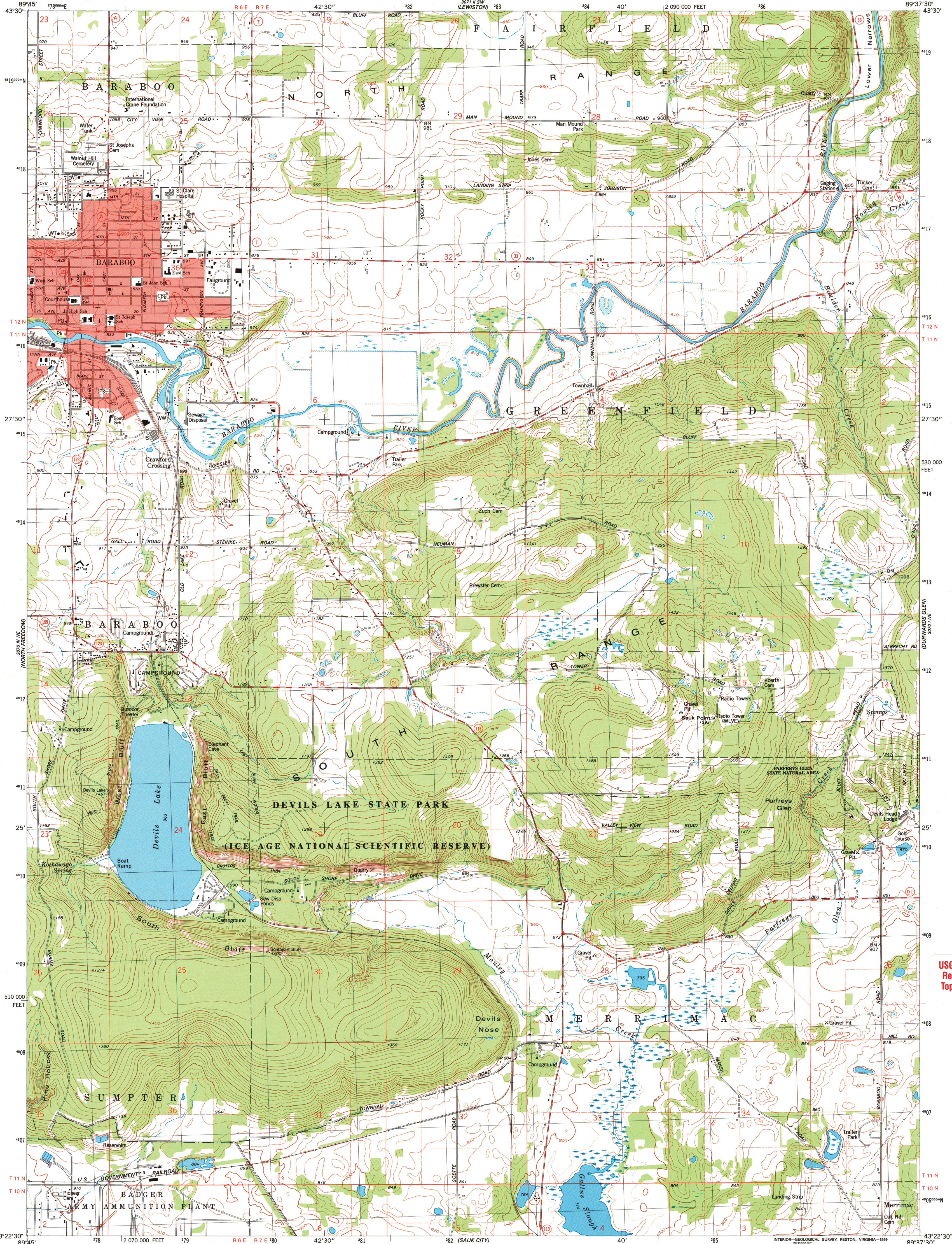




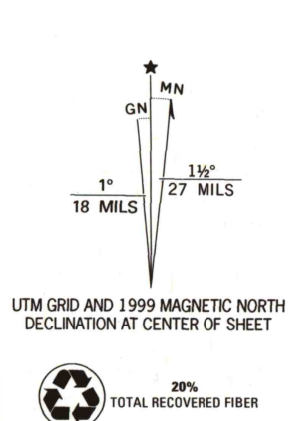
U.S. DEPARTMENT OF THE INTERIOR
U.S. GEOLOGICAL SURVEY

STATE OF WISCONSIN
DIVISION OF HIGHWAYS
GEOLOGICAL AND NATURAL HISTORY SURVEY

BARABOO QUADRANGLE
WISCONSIN—SAUK CO.
7.5 MINUTE SERIES (TOPOGRAPHIC)



Produced by the United States Geological Survey
Derived from imagery taken 1974 and other sources. Photoinspected
using imagery taken 1994; no major culture or drainage changes
observed. PLSS and survey control current as of 1975
Boundaries, other than corporate, revised 1999
North American Datum of 1927 (NAD 27). Projection and
10 000-foot ticks: Wisconsin coordinate system, south zone
(transverse Mercator)
1000-meter Universal Transverse Mercator grid, zone 16
North American Datum of 1983 (NAD 83) is shown by dashed
corner ticks. The values of the shift between NAD 27 and NAD 83
for 7.5-minute intersections are obtainable from National Geodetic
Survey NADCON software
There may be private inholdings within the boundaries of
the National or State reservations shown on this map



SCALE 1:24 000
1 000 0 1000 2000 3000 4000 5000 6000 7000 FEET
1 0 1 2 3 4 5 6 7 8 9 10 KILOMETER
CONTOUR INTERVAL 20 FEET
DOTTED LINES REPRESENT 10-FOOT CONTOURS
NATIONAL GEODETIC VERTICAL DATUM OF 1929
TO CONVERT FROM FEET TO METERS, MULTIPLY BY 0.3048

THIS MAP COMPLIES WITH NATIONAL MAP ACCURACY STANDARDS
FOR SALE BY U.S. GEOLOGICAL SURVEY, P.O. BOX 25286, DENVER, COLORADO 80225
AND WISCONSIN GEOLOGICAL AND NATURAL HISTORY SURVEY, MADISON, WISCONSIN 53706
A FOLDER DESCRIBING TOPOGRAPHIC MAPS AND SYMBOLS IS AVAILABLE ON REQUEST

ROAD CLASSIFICATION
Primary highway, hard surface ———— improved surface ————
Secondary highway, hard surface ———— Unimproved road ————
○ Interstate Route ○ U.S. Route ○ State Route



DEC 06 2004 BARABOO, WIS.

1994

NIMA 3070 1 NW—SERIES V861



USGS Library
Reston, VA.
Topo Archive

