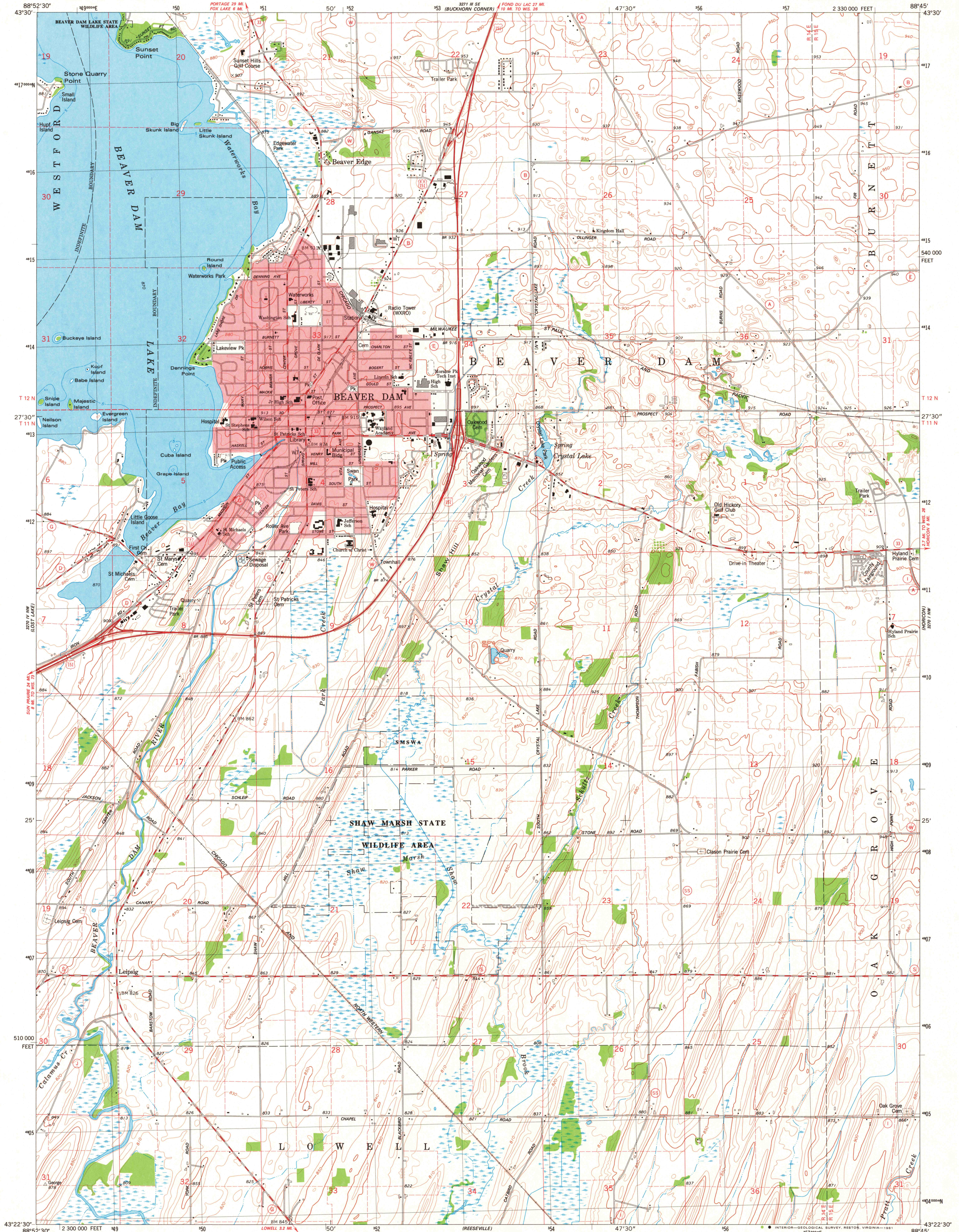
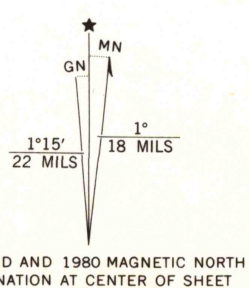


UNITED STATES
DEPARTMENT OF THE INTERIOR
GEOLOGICAL SURVEY

BEAVER DAM QUADRANGLE
WISCONSIN-DODGE CO.
7.5 MINUTE SERIES (TOPOGRAPHIC)
NE/4 BEAVER DAM 15' QUADRANGLE



Mapped, edited, and published by the Geological Survey
Control by USGS and NOS/NOAA
Topography by photogrammetric methods from aerial photographs
taken 1975. Field checked 1976. Map edited 1980
Hydrography compiled from information furnished by
Wisconsin Department of Natural Resources
Projection and 10,000-foot grid ticks: Wisconsin coordinate
system, south zone (Lambert conformal conic)
1000-meter Universal Transverse Mercator grid, zone 16
1927 North American Datum
To place on the predicted North American Datum 1983
move the projection lines 4 meters north and
9 meters east as shown by dashed corner ticks
There may be private inholdings within the boundaries of
the National or State reservations shown on this map
Red tint indicates area in which only landmark buildings are shown



SCALE 1:24,000
1000 0 1000 2000 3000 4000 5000 6000 7000 FEET
1 KILOMETER
CONTOUR INTERVAL 10 FEET
NATIONAL GEODETIC VERTICAL DATUM OF 1929

THIS MAP COMPLIES WITH NATIONAL MAP ACCURACY STANDARDS
FOR SALE BY U.S. GEOLOGICAL SURVEY, RESTON, VIRGINIA 22092
AND WISCONSIN GEOLOGICAL AND NATURAL HISTORY SURVEY, MADISON, WISCONSIN 53706
A FOLDER DESCRIBING TOPOGRAPHIC MAPS AND SYMBOLS IS AVAILABLE ON REQUEST



ROAD CLASSIFICATION
Primary highway, hard surface ———— Light-duty road, hard or improved surface
Secondary highway, hard surface ———— Unimproved road
Interstate Route ———— U.S. Route ———— State Route

BEAVER DAM, WIS.
NE/4 BEAVER DAM 15' QUADRANGLE
N4322.5-W8845/7.5
1980
DMA 3270 IV NE-SERIES V861

JAN 2 1981
2000