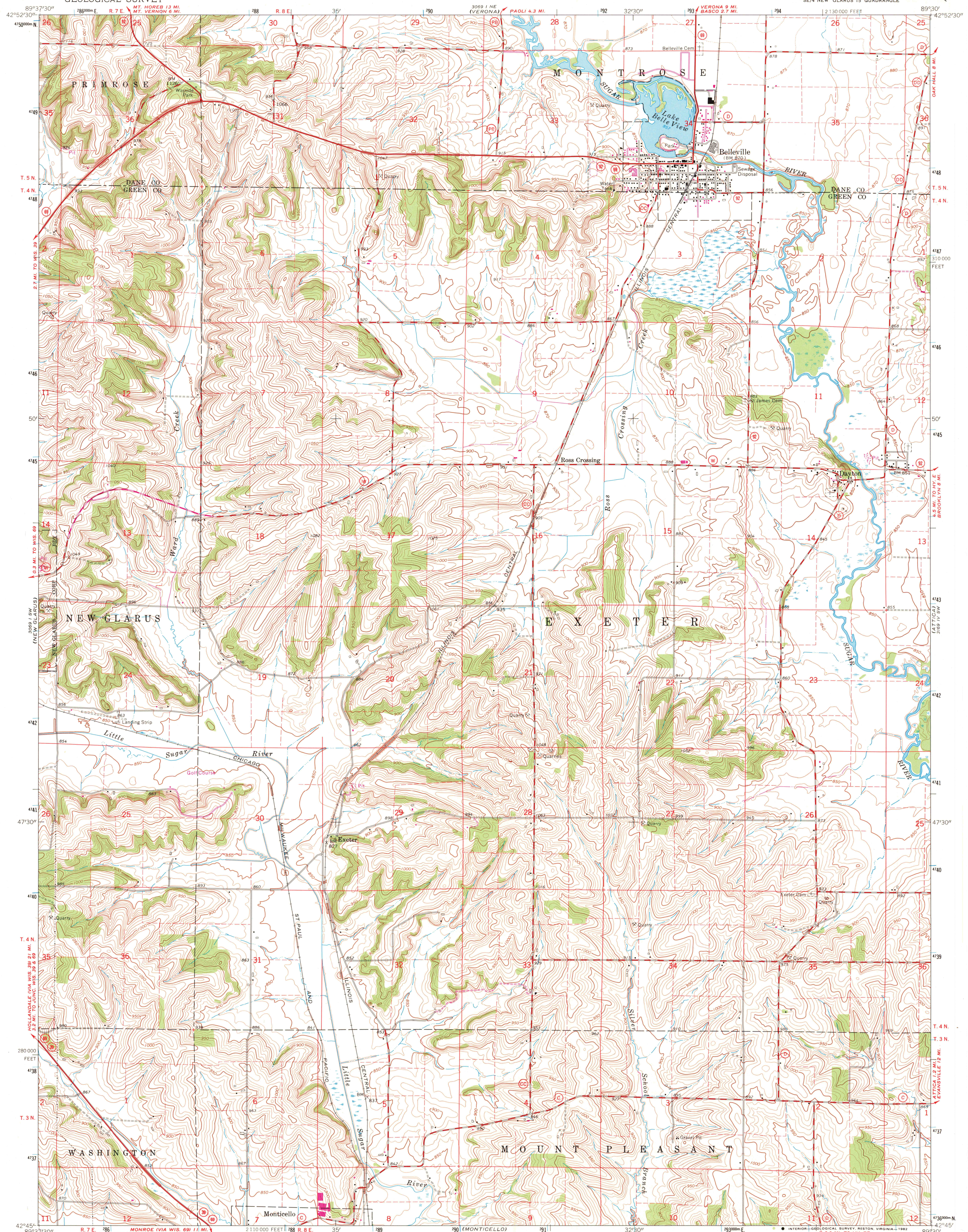
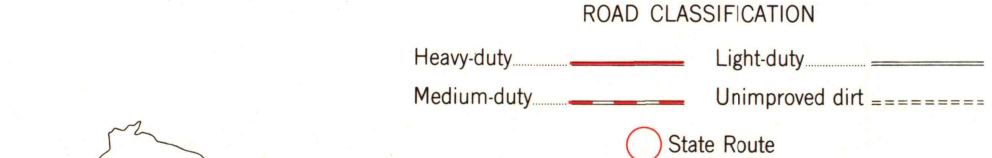
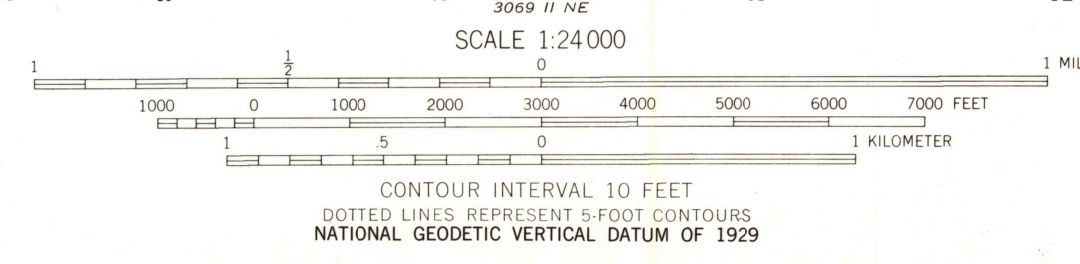


UNITED STATES  
DEPARTMENT OF THE INTERIOR  
GEOLOGICAL SURVEY

BELLEVILLE QUADRANGLE  
WISCONSIN  
7.5 MINUTE SERIES (TOPOGRAPHIC)



Mapped, edited, and published by the Geological Survey in cooperation with State of Wisconsin agencies  
Control by USGS and USCGS  
Topography by photogrammetric methods from aerial photographs taken 1961. Field checked 1962  
Polyconic projection. 1927 North American datum  
10,000-foot grid based on Wisconsin coordinate system, south zone  
1000-meter Universal Transverse Mercator grid ticks, zone 16, shown in blue  
Fine red dashed lines indicate selected fence and field lines where generally visible on aerial photographs. This information is unchecked  
Revisions shown in purple compiled from aerial photographs taken 1971. This information not field checked  
Map photoinspected 1981  
No major culture or drainage changes observed



QUADRANGLE LOCATION  
To place on the predicted North American Datum 1983 move the projection lines 4 meters north and 10 meters east as shown by dashed corner ticks

BELLEVILLE, WIS.  
SE/4 NEW GLARUS 15' QUADRANGLE  
N4245-W8930/7.5

1962  
PHOTOREVISED 1971  
AMS 3069 I SE-SERIES V861  
PHOTOINSPECTED 1981

RETURN TO:  
USGS AND HISTORICAL MAP ARCHIVES

JAN 13 1983

2340