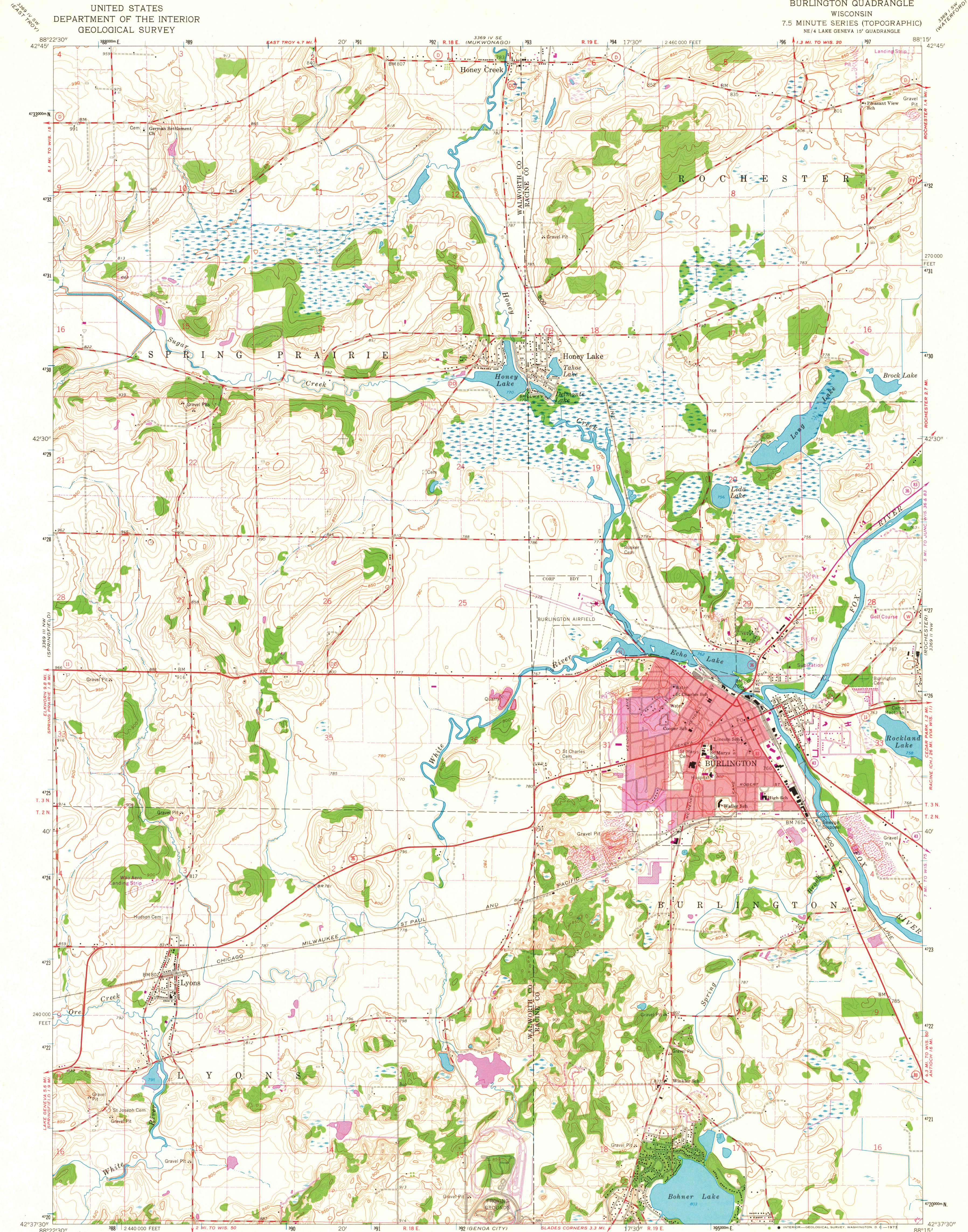


UNITED STATES
DEPARTMENT OF THE INTERIOR
GEOLOGICAL SURVEY

BURLINGTON QUADRANGLE
WISCONSIN
7.5 MINUTE SERIES (TOPOGRAPHIC)
NE 1/4 LAKE GENEVA 15' QUADRANGLE



Maped, edited, and published by the Geological Survey

Control by USGS and USC&GS

Topography by photogrammetric methods from aerial photographs
taken 1954-55. Field checked 1960

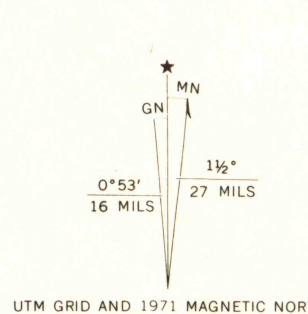
Polyconic projection. 1927 North American datum
10,000-foot grid based on Wisconsin coordinate system, south zone
1000-Meter Universal Transverse Mercator grid ticks,
zone 16, shown in blue

Red tint indicates area in which only landmark buildings are shown

Fine red dashed lines indicate selected fence and field lines where
generally visible on aerial photographs. This information is unchecked

Revisions shown in purple compiled from aerial photographs
taken 1971. This information not field checked

Purple tint indicates extension of urban areas



ROAD CLASSIFICATION	
Heavy-duty	Light-duty
Medium-duty	Unimproved dirt
State Route	

BURLINGTON, WIS.
NE 1/4 LAKE GENEVA 15' QUADRANGLE
N 4237.5-W 8815.7.5

1960
PHOTOREVISED 1971
AMS 3369 III NE-SERIES V861

MAP AND AIR PHOTO
LIBRARY

APR 3 1973

University of Wisconsin

1971
copy
1-1