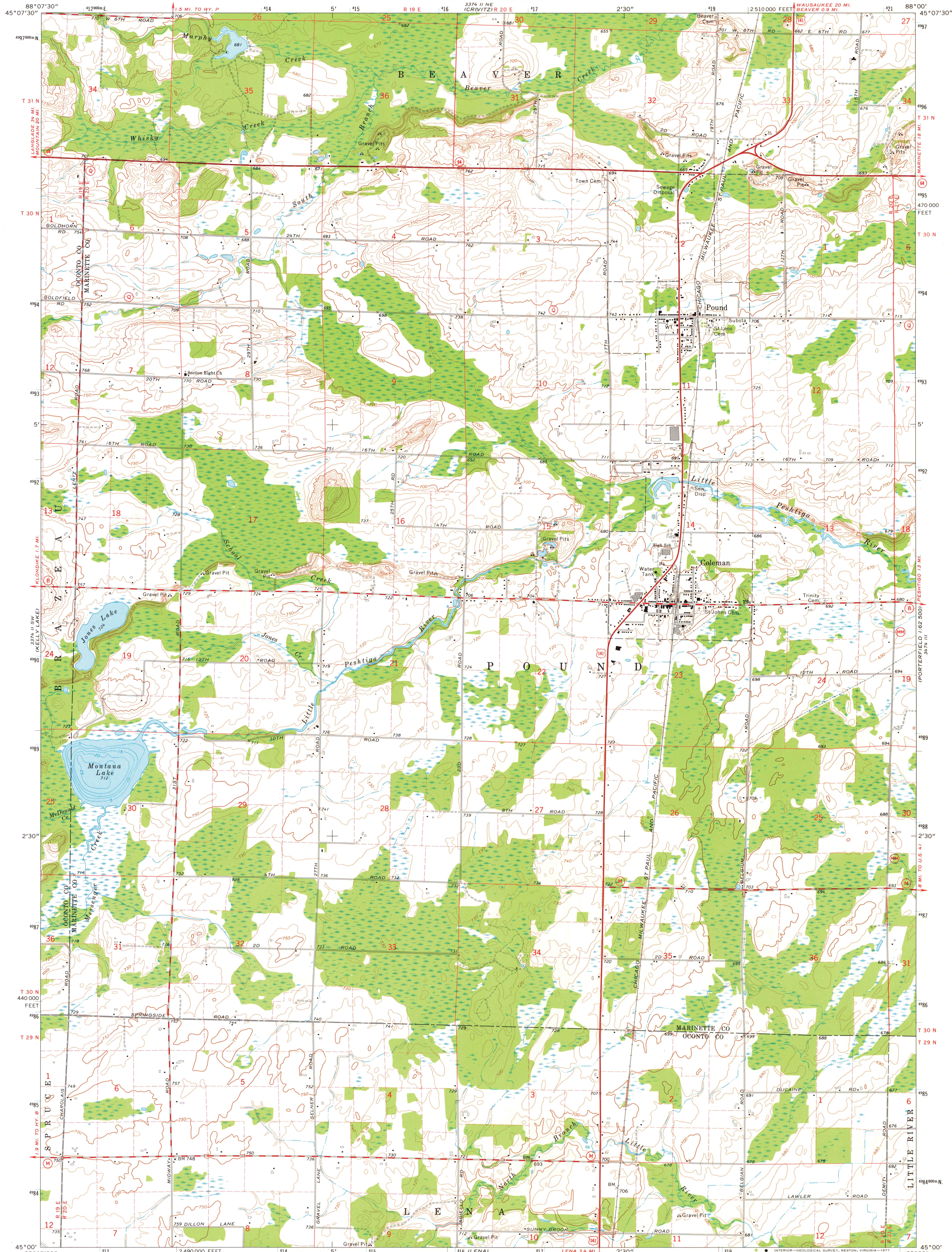


UNITED STATES
DEPARTMENT OF THE INTERIOR
GEOLOGICAL SURVEY

STATE OF WISCONSIN
DIVISION OF HIGHWAYS
GEOLOGICAL AND NATURAL HISTORY SURVEY

COLEMAN QUADRANGLE
WISCONSIN
7.5 MINUTE SERIES (TOPOGRAPHIC)



Maped, edited, and published by the Geological Survey
in cooperation with the Wisconsin Division of Highways
and Wisconsin Geological and Natural History Survey
Control by USGS and NOS/NOAA

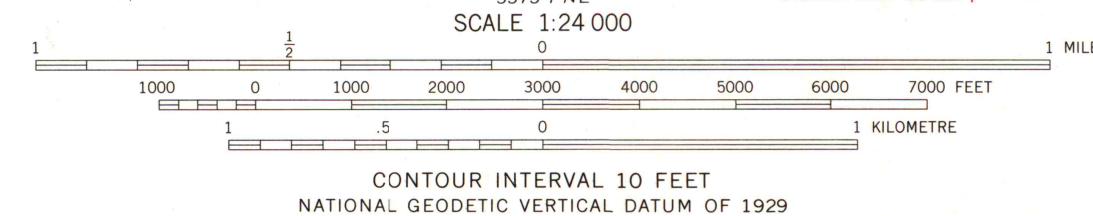
Topography by photogrammetric methods from aerial
photographs taken 1972. Field checked 1973

Hydrography compiled from information furnished by
Wisconsin Department of Natural Resources

Projection and 10,000-foot grid ticks: Wisconsin coordinate
system, central zone (Lambert conformal conic)
1000-metre Universal Transverse Mercator grid ticks,
zone 16, shown in blue. 1927 North American datum

Fine red dashed lines indicate selected fence and field lines where
generally visible on aerial photographs. This information is unchecked

UTM GRID AND 1973 MAGNETIC NORTH
DECLINATION AT CENTER OF SHEET



THIS MAP COMPLIES WITH NATIONAL MAP ACCURACY STANDARDS
FOR SALE BY U. S. GEOLOGICAL SURVEY, RESTON, VIRGINIA 22092
AND BY THE WISCONSIN GEOLOGICAL AND NATURAL HISTORY SURVEY, MADISON, WISCONSIN 53706
A FOLDER DESCRIBING TOPOGRAPHIC MAPS AND SYMBOLS IS AVAILABLE ON REQUEST



ROAD CLASSIFICATION
Primary highway, hard surface ————
Secondary highway, hard surface ————
Unimproved road ————
Interstate Route ————
U. S. Route ————
State Route ————
Light-duty road, hard or improved surface ————
Unimproved road ————

COLEMAN, WIS.
SE/4 COLEMAN 15' QUADRANGLE
N4500-W8800/7.5

1973

AMS 3374 II SE-SERIES V861

MAP AND AIR PHOTO
LIBRARY

AUG 19 1977

University of Wisconsin
Madison

1973
copy
1-1