

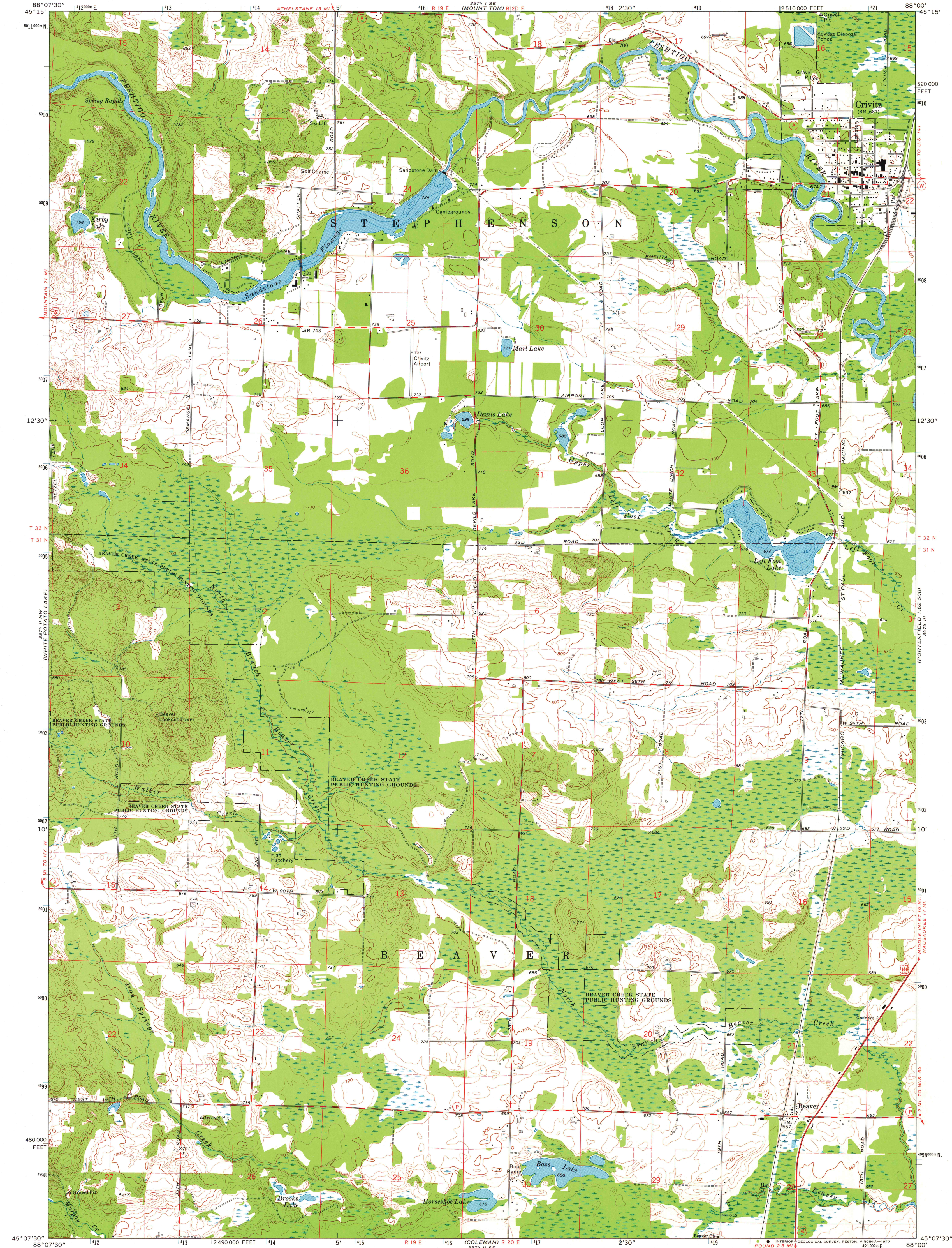
324 1/2 NW
(KELLY LAKE)
327 1/2 SW

UNITED STATES
DEPARTMENT OF THE INTERIOR
GEOLOGICAL SURVEY

STATE OF WISCONSIN
DIVISION OF HIGHWAYS
GEOLOGICAL AND NATURAL HISTORY SURVEY

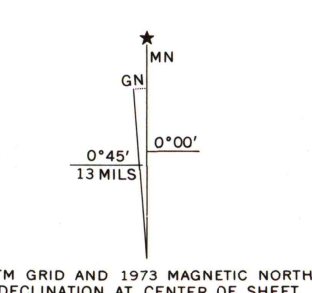
CRIVITZ QUADRANGLE
WISCONSIN-MARINETTE CO.
7.5 MINUTE SERIES (TOPOGRAPHIC)
NE 1/4 COLEMAN 15' QUADRANGLE

327 1/2 W
(WAUSAUKEE 1:62 500)



327 1/2 SW
(KELLY LAKE)

Mapped, edited, and published by the Geological Survey
in cooperation with the Wisconsin Division of Highways
and Wisconsin Geological and Natural History Survey
Control by USGS and NOS/NOAA
Topography by photogrammetric methods from aerial
photographs taken 1972. Field checked 1973
Hydrography compiled from information furnished by
Wisconsin Department of Natural Resources
Projection and 10,000-foot grid ticks: Wisconsin coordinate
system, central zone (Lambert conformal conic)
1000-metre Universal Transverse Mercator grid ticks,
zone 16, shown in blue. 1927 North American datum
Fine red dashed lines indicate selected fence and field lines where
generally visible on aerial photographs. This information is unchecked



THIS MAP COMPLIES WITH NATIONAL MAP ACCURACY STANDARDS
FOR SALE BY U. S. GEOLOGICAL SURVEY, RESTON, VIRGINIA 22092
AND BY THE WISCONSIN GEOLOGICAL AND NATURAL HISTORY SURVEY, MADISON, WISCONSIN 53706
A FOLDER DESCRIBING TOPOGRAPHIC MAPS AND SYMBOLS IS AVAILABLE ON REQUEST



ROAD CLASSIFICATION

Primary highway, hard surface ———— Light-duty road, hard or improved surface ————

Secondary highway, hard surface ———— Unimproved road ————

○ Interstate Route ○ U. S. Route ○ State Route

CRIVITZ, WIS.
NE 1/4 COLEMAN 15' QUADRANGLE
N4507.5-W8800/7.5
1973
AMS 3374 II NE-SERIES V861

MAP AND AIR PHOTO
LIBRARY
SEP 19 1977
University of Wisconsin
Madison

1973
copy
1-1